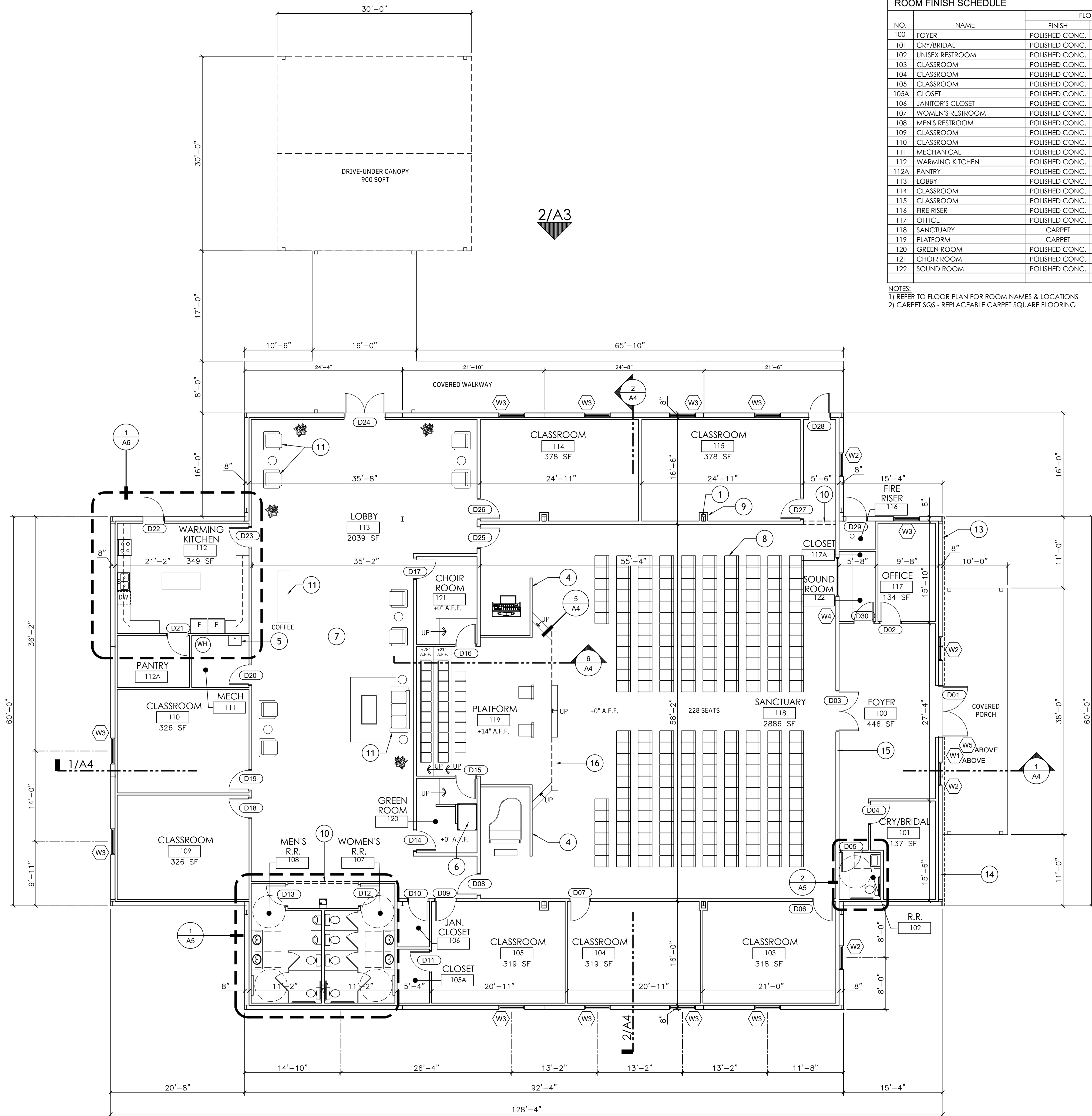


ROOM FINISH SCHEDULE

NO.	NAME	FLOOR		WALL		REMARKS
		FINISH	BASE	MATL.	FINISH	
100	FOYER	POLISHED CONC.	VINYL	DRYWALL	PAINT	
101	CRY/BRIDAL	POLISHED CONC.	VINYL	DRYWALL	PAINT	
102	UNISEX RESTROOM	POLISHED CONC.	VINYL	DRYWALL	PAINT	4'-0" HIGH TILE WAINSCOT ON SELECTED WALLS. SEE RR ELEVATIONS SHEET A5.
103	CLASSROOM	POLISHED CONC.	VINYL	DRYWALL	PAINT	
104	CLASSROOM	POLISHED CONC.	VINYL	DRYWALL	PAINT	
105	CLASSROOM	POLISHED CONC.	VINYL	DRYWALL	PAINT	
105A	CLOSET	POLISHED CONC.	VINYL	DRYWALL	PAINT	
106	JANITOR'S CLOSET	POLISHED CONC.	VINYL	DRYWALL	PAINT	
107	WOMEN'S RESTROOM	POLISHED CONC.	VINYL	DRYWALL	PAINT	4'-0" HIGH TILE WAINSCOT ON SELECTED WALLS. SEE RR ELEVATIONS SHEET A5.
108	MEN'S RESTROOM	POLISHED CONC.	VINYL	DRYWALL	PAINT	4'-0" HIGH TILE WAINSCOT ON SELECTED WALLS. SEE RR ELEVATIONS SHEET A5.
109	CLASSROOM	POLISHED CONC.	VINYL	DRYWALL	PAINT	
110	CLASSROOM	POLISHED CONC.	VINYL	DRYWALL	PAINT	
111	MECHANICAL	POLISHED CONC.	VINYL	DRYWALL	PAINT	
112	WARMING KITCHEN	POLISHED CONC.	VINYL	DRYWALL	PAINT	
112A	PANTRY	POLISHED CONC.	VINYL	DRYWALL	PAINT	
113	LOBBY	POLISHED CONC.	VINYL	DRYWALL	PAINT	
114	CLASSROOM	POLISHED CONC.	VINYL	DRYWALL	PAINT	
115	CLASSROOM	POLISHED CONC.	VINYL	DRYWALL	PAINT	
116	FIRE RISER	POLISHED CONC.	VINYL	DRYWALL	PAINT	
117	OFFICE	POLISHED CONC.	VINYL	DRYWALL	PAINT	
118	SANCTUARY	CARPET	VINYL	DRYWALL	PAINT	
119	PLATFORM	CARPET	VINYL	DRYWALL	PAINT	
120	GREEN ROOM	POLISHED CONC.	VINYL	DRYWALL	PAINT	
121	CHOIR ROOM	POLISHED CONC.	VINYL	DRYWALL	PAINT	
122	SOUND ROOM	POLISHED CONC.	VINYL	DRYWALL	PAINT	

NOTES:
1) REFER TO FLOOR PLAN FOR ROOM NAMES & LOCATIONS
2) CARPET SQS - REPLACEABLE CARPET SQUARE FLOORING



WALL LEGEND

[Symbol]	METAL BUILDING GIRT
[Symbol]	METAL STUD WALL (3 5/8" UNLESS DIMENSIONED OTHERWISE)

FLOOR PLAN KEYNOTES

- STEEL FRAME BY METAL BLDG. MANUFACTURER (TYP.)
- STEEL GIRTS AT EXTERIOR WALLS BY METAL BLDG. MANUFACTURER (TYP.)
- STEEL BUILDING BRACING BEHIND WALL (ADJUST WALL AS NEEDED)
- KNEE WALL
- SERVICE SINK
- WHEELCHAIR LIFT: SAVARIA OR APPROVED EQUAL
- SPACE TO RECEIVE BLACK DRYWALL AT CEILING AND DOWN WALLS TO 18'-0" A.F.F. NON-FIXED PER CHAIRS (TYP.)
- BUILD OUT AROUND COLUMNS AS NEEDED (TYP.)
- HEADER ABOVE (TYP.) SEE RCP.
- BY OWNER
- UNUSED
- STONE VENEER EXTERIOR FINISH (SEE A-2)
- TYP. EXTERIOR WALL CONSTRUCTION (SEE WALL TYPES)
- TYP. INTERIOR WALL CONSTRUCTION (SEE WALL TYPES)
- PRAYER RAIL BY OTHERS
-

NOTES

- DIMENSIONS SHOWN ARE TO FACE OF STUD/STEEL OR CENTERLINE OF OBJECT, UNLESS NOTED.
- DOORS NOT DIMENSIONED ARE LOCATED AT CORNER OR CENTERED IN WALL/SPACE.
- REFER TO SHEET A5 FOR DOOR & WINDOW SCHEDULES
- REFER TO SHEET A2 FOR RCP.
- INSTALL WOOD BLOCKING FOR ALL GRAB BARS, TOILET ACCESSORIES, FIXTURES, ETC AND AS NOTED.
- REFER TO MEP DRAWINGS FOR INFORMATION SPECIFIC TO EACH TRADE.
- REFER TO SHEETS A5 & A6 FOR ENLARGED FLOOR PLANS AND INTERIOR ELEVATIONS
- REFER TO CIVIL DWGS FOR EXTERIOR CONCRETE PAD LOCATIONS, SIDEWALKS, ETC.
- NO HANDRAIL REQUIRED AT PLATFORM

ISSUED FOR CONSTRUCTION

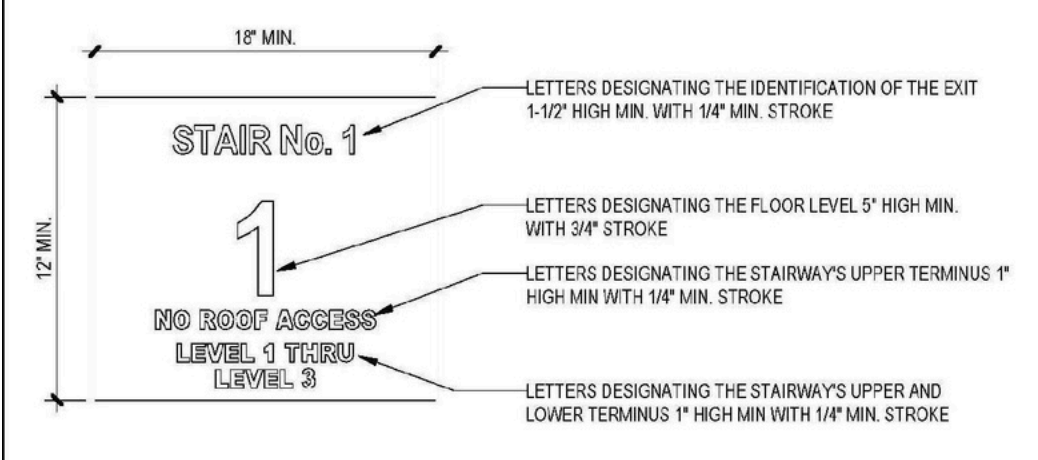
NO.	DESCRIPTION	DATE	REVISION	BY	CHKD	APP'D	COMMENTS

SHEET TITLE
FLOOR PLAN

PROJECT NAME & LOCATION

SCALE AS SHOWN

DRAWN BY DB	PROJECT NO C25-0010
CHECKED BY NB	A1
DATE	02-19-2026



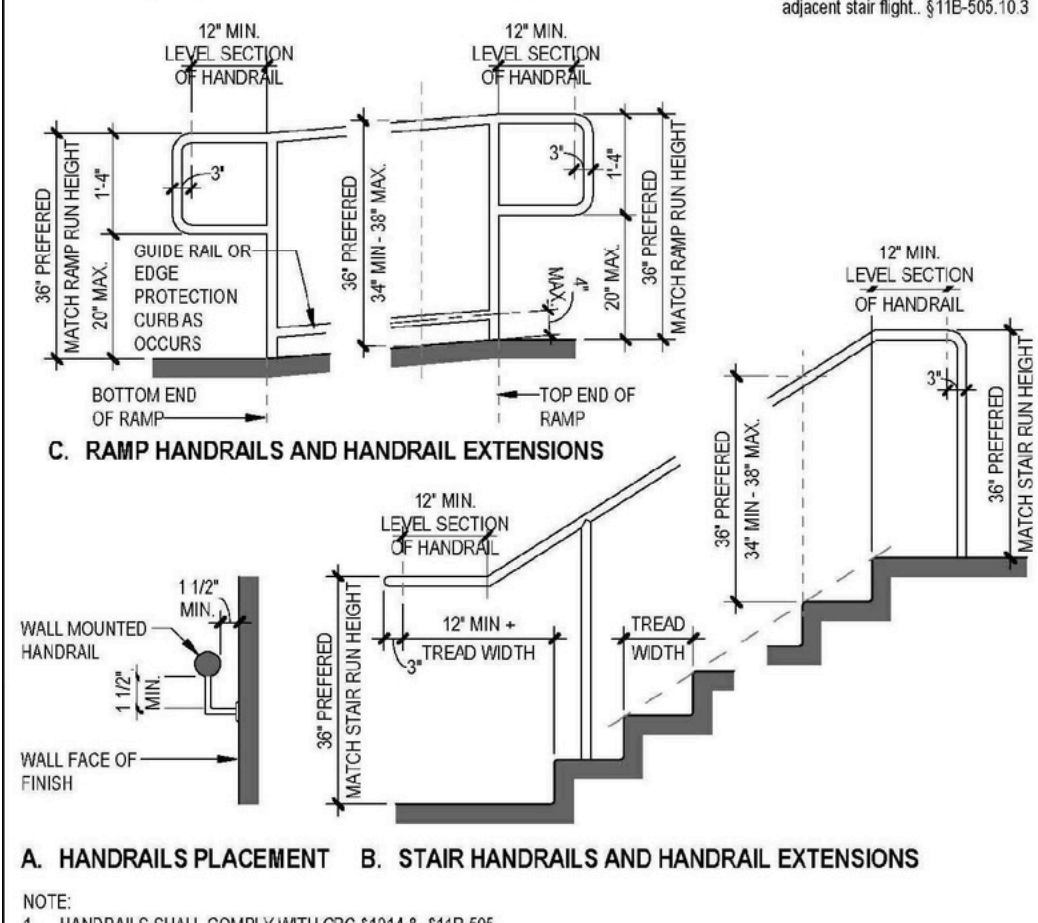
STAIRWAY IDENTIFICATION SIGNS

- A sign shall be provided at each landing in an interior exit stairway and ramp connecting more than three stories designating the floor level, the terminus of the top and bottom of the interior exit stairway and ramp and the identification of the stairway or ramp. The sign shall also show the floor level and the availability of roof access from the interior exit stairway and ramp to the fire department. The bottom of the sign shall be located not less than 5 feet above the floor landing in a position that is readily visible when the doors are in the open and closed positions.
- In addition to the stairway identification signs, raised characters and braille floor identification signs shall be located at the landing of each floor level, placed adjacent to the door on the latch side, in all enclosed stairways in buildings two or more stories in height to identify the floor level. At the exit discharge level, the sign shall include a raised fire pointed star located to the left of the identifying floor level. The outside diameter of the star shall be the same as the height of the raised characters.
- Signage Requirements: Stairway identification signs shall comply with all of the following requirements:
 - The sign shall be a minimum size of 18 inches by 12 inches.
 - The letters designating the identification of the interior exit stairway and ramp shall be 1/4 inch high, shall be placed at the top of the sign and shall be not less than 1/16 inch (2.5 mm) in height block lettering with 1/4 inch (6 mm) strokes.
 - The number designating the floor level shall be not less than 1/16 inch (2.5 mm) in height with 3/16 inch (4.8 mm) strokes and located in the center of the sign. The maximum levels shall have the letter "M" preceding the floor level. Basement levels shall have the letter "B" preceding the floor number.
 - Other letters and numbers shall be not less than 1 inch (25 mm) in height.
 - The stairway's upper terminus, such as ROOF ACCESS or NO ROOF ACCESS, shall be placed under the stairway identification in 1-inch-high (25 mm) block lettering with 1/4-inch (6 mm) strokes.
 - The lower and upper terminus of the stairway shall be placed at the bottom of the sign in 1-inch-high (25 mm) block lettering with 1/4-inch (6 mm) strokes.
- Characters and their background shall have a non-reflective finish. Characters shall contrast with their background, with either light characters on a dark background or dark characters on a light background.
- Where signs required by Section 1023.9 are installed in the interior exit stairways and ramps of buildings subject to Section 1025, the signs shall be made of the same materials as required by Section 1025.4.

ACCESSIBLE EXIT SIGNAGE (1009.9) Scale: 1/12" = 1'-0" **19**

11B-509 HANDRAILS

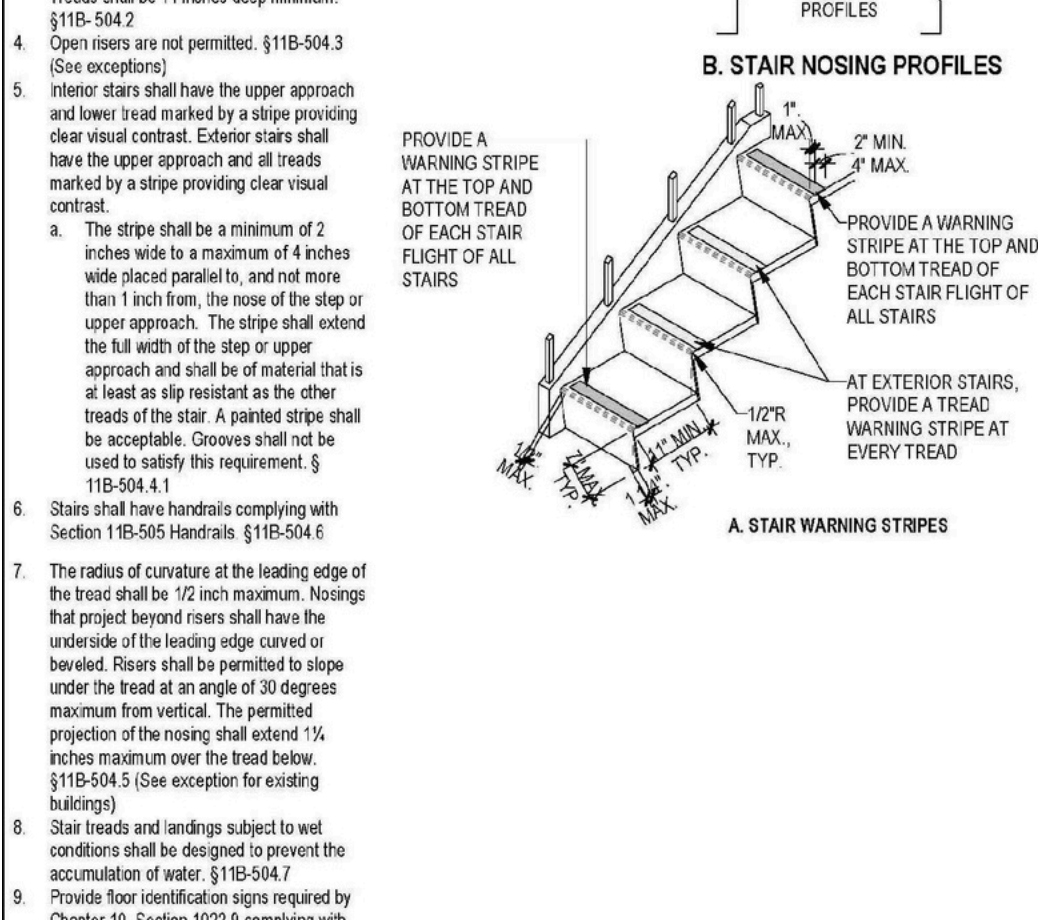
- Handrails shall be provided on both sides of stairs and ramps. Exception: Curbs ramps. Exception: At stair landings, handrails are not required when the ramp is on a level floor (152 mm) in length. The bottom of handrail gripping surfaces shall not be obstructed for more than 20 percent of their length. Where provided, horizontal projections shall occur 11/2 inches minimum below the bottom of the handrail gripping surface. § 11B-505.2.1
- Handrails shall be continuous within the full length of each stair flight or ramp run. Inside handrails shall be setback or dogleg stairs and ramps shall be continuous between flights or ramps. § 11B-505.3
- Top gripping surface of handrails shall be 24 inches maximum and 18 inches minimum vertically above walking surfaces, stairs and ramp surfaces. Handrails shall be at a consistent height above walking surfaces, stairs, ramps, and ramp surfaces. § 11B-505.4
- Clearance between handrail gripping surfaces and adjacent surfaces shall be 1 1/2 inches minimum. Handrails may be located in a recess if the recess is 3 inches maximum and 18 inches minimum clear above the top of the handrail. § 11B-505.5



HANDRAILS (11B-505) Scale: 1/12" = 1'-0" **17**

11B-504 STAIRWAYS

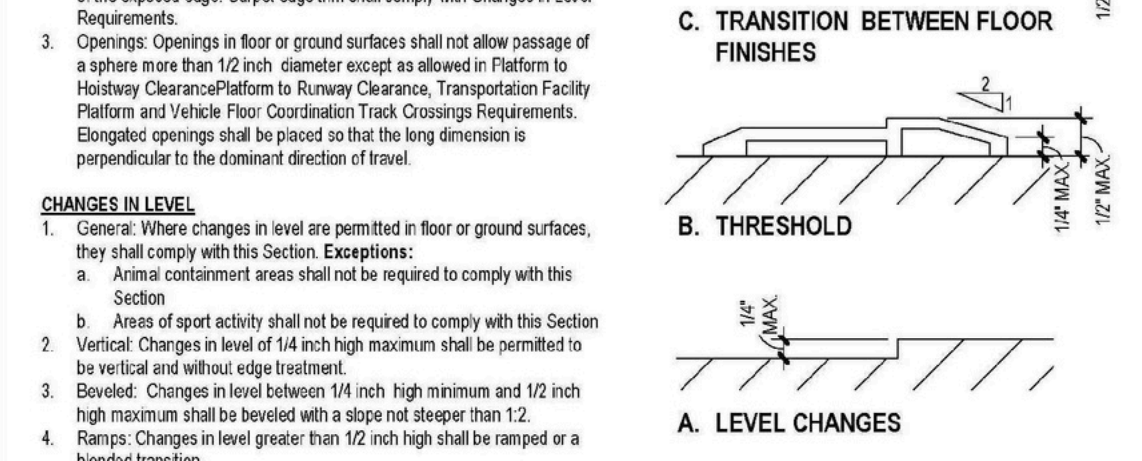
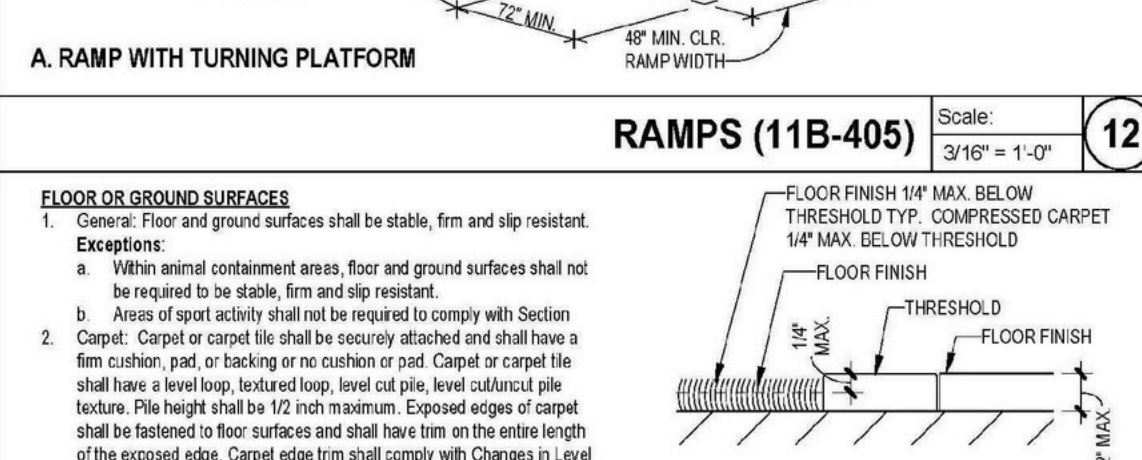
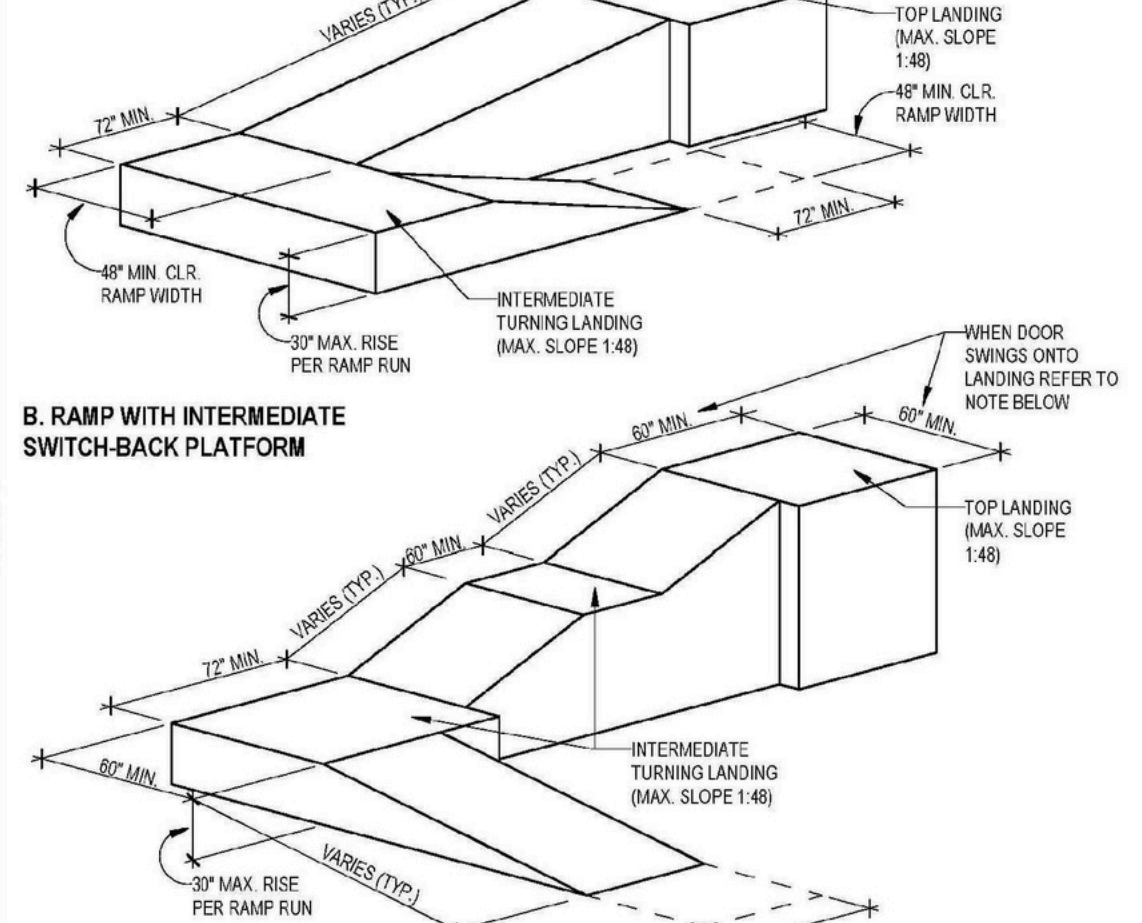
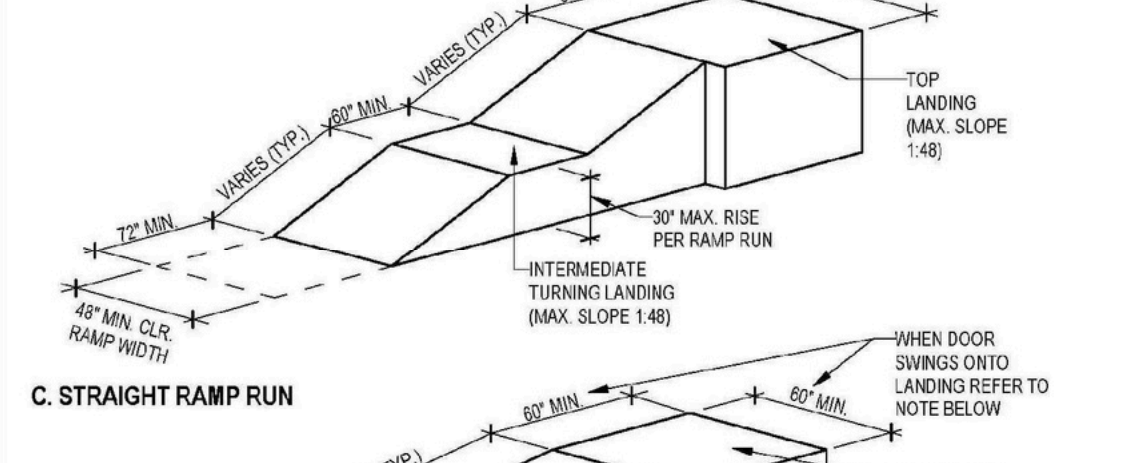
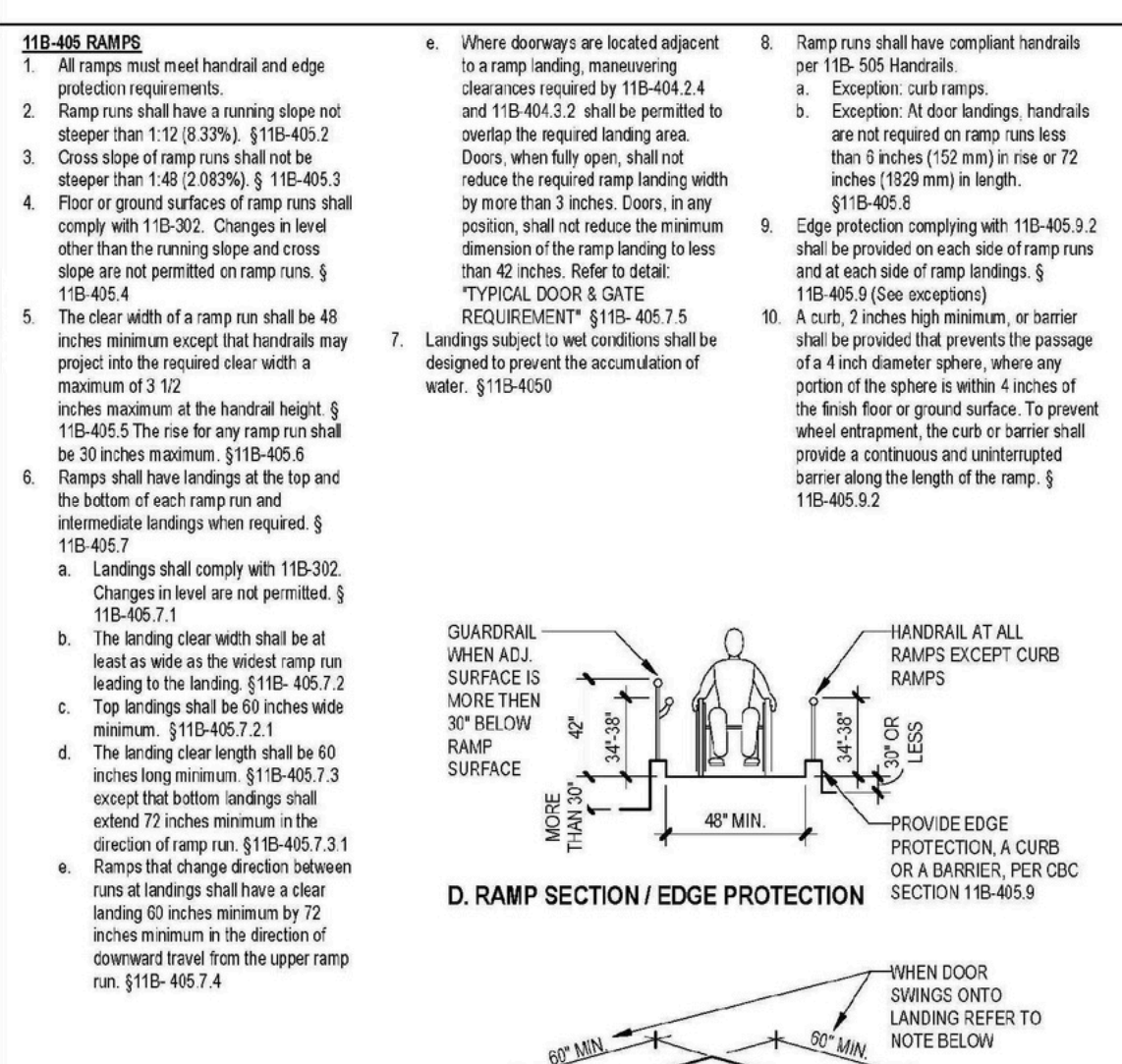
- A stair is defined as a change in elevation, consisting of one or more risers [300] inches and in the means of less than 12 inches and in the means of excess, sloped surfaces shall be used. § 1009.3
- All steps on a flight of stairs shall have uniform rise heights and uniform tread depths. Risers shall be 4 inches high minimum and 7 inches deep minimum. Treads shall be 11 inches deep minimum. § 11B-504.2
- Open risers are not permitted. § 11B-504.3
- Clearance: Interior stairs shall have the upper approach and lower level marked by a slope providing clear vertical clearance. Exterior stairs shall have the upper approach and all treads marked by a slope providing clear vertical clearance.
- The slope shall be a minimum of 2 inches wide to a maximum of 4 inches wide placed parallel to, and not more than 1 inch from, the nose of the step or upper approach. The slope shall extend the full width of the step or upper approach and shall be of material that is at least as slip resistant as the other treads of the stair. A painted stripe shall be used to satisfy this requirement. § 11B-504.4
- Stairs shall have handrails complying with Section 11B-509 Handrails. § 11B-504.6
- The radius of curvature at the leading edge of the tread shall be 1/2 inch maximum. Notings that project beyond risers shall have the underside of the leading edge covered or beveled. Risers shall be permitted to slope under the head at an angle of 30 degrees maximum from vertical. The permitted projection of the nosing shall extend 1/2 inches maximum over the head below. § 11B-504.5 (See exception for existing buildings)
- Stair treads and landings subject to prevent conditions shall be designed to prevent the accumulation of water. § 11B-504.7
- Provide floor identification signs required by Chapter 18, Section 1022.2 complying with Section 911B-103.1



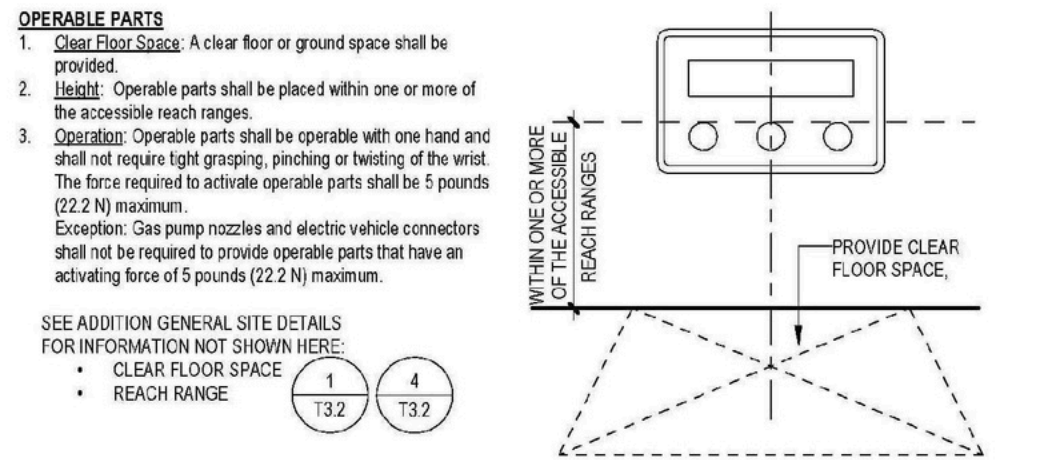
STAIRS (11B-504) Scale: 1/12" = 1'-0" **16**

11B-408 RAMPS

- All ramps must meet handrail and edge protection requirements.
- Ramp runs shall have a running slope not steeper than 1:12 (8.33%). § 11B-405.2
- Cross slope of ramp runs shall not be steeper than 1:48 (2.083%). § 11B-405.3
- Floor or ground surfaces of ramp runs shall comply with 11B-302. Changes in level other than the running slope and cross slope are not permitted on ramp runs. § 11B-405.4
- The clear width of a ramp shall be 48 inches minimum except that handrails may project into the required clear width a maximum of 3 1/2 inches maximum at the handrail height. § 11B-405.7.1
- Landings shall comply with 11B-302. Changes in level are not permitted. § 11B-405.7.2
- The landing clear width shall be at least as wide as the widest ramp run. Extensions shall return to a wall, guard, or the landing surface, or shall be continuous to the bottom of each ramp run and intermediate landings when required. § 11B-405.7.3
- Landings shall comply with 11B-302. Changes in level are not permitted. § 11B-405.7.4



LEVEL CHANGES (11B-302 11B-303) Scale: 1/12" = 1'-0" **11**

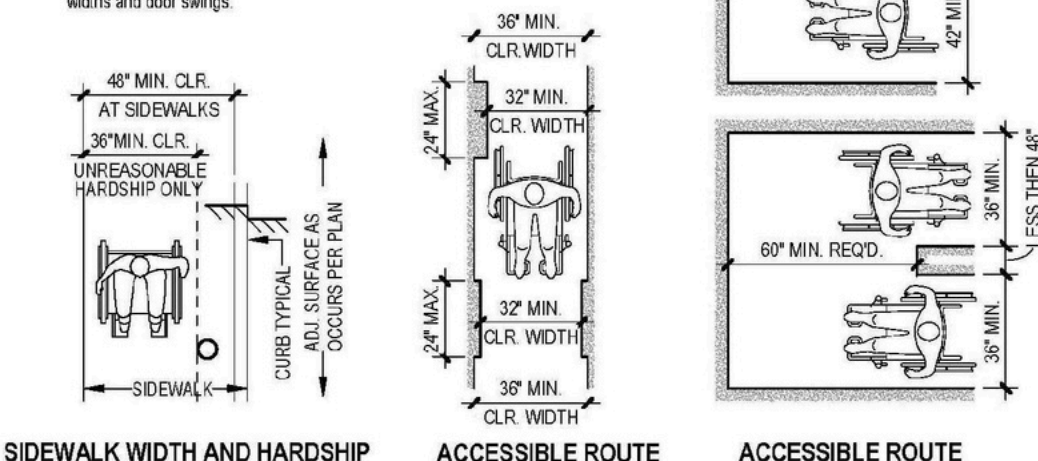
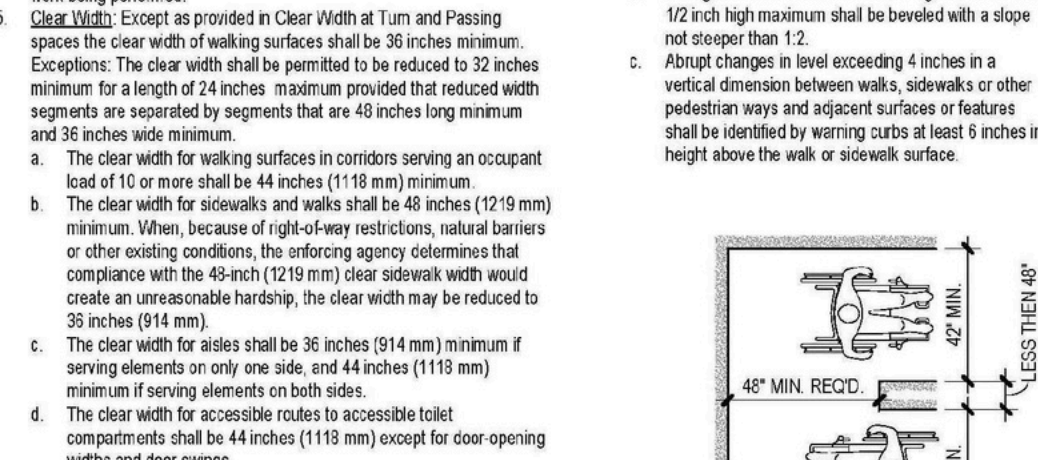
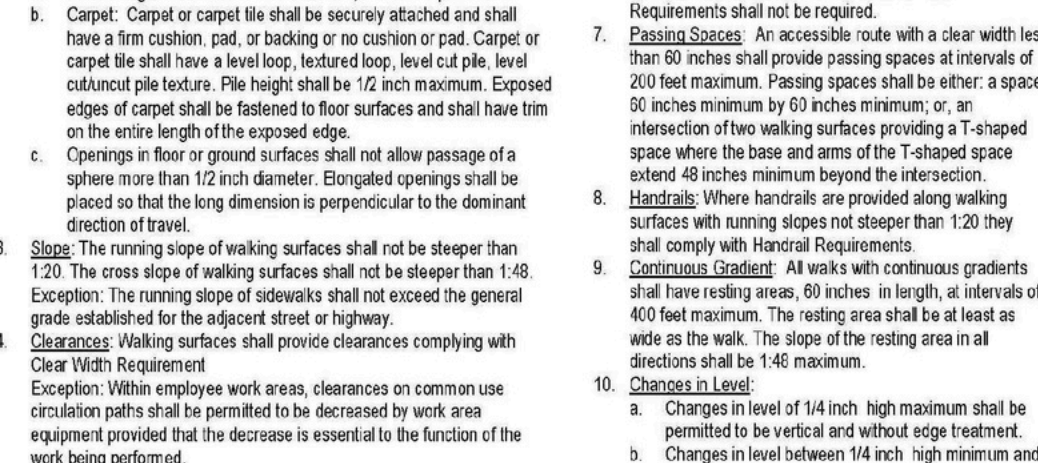
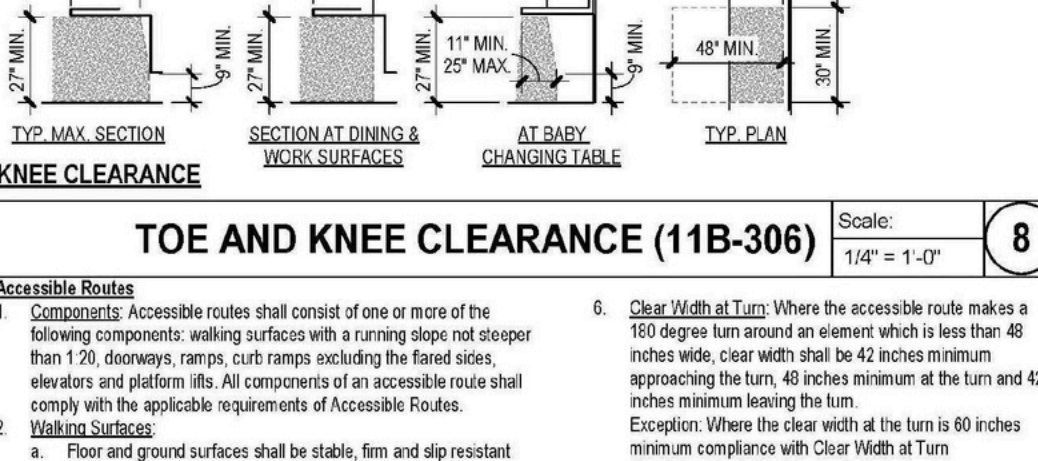
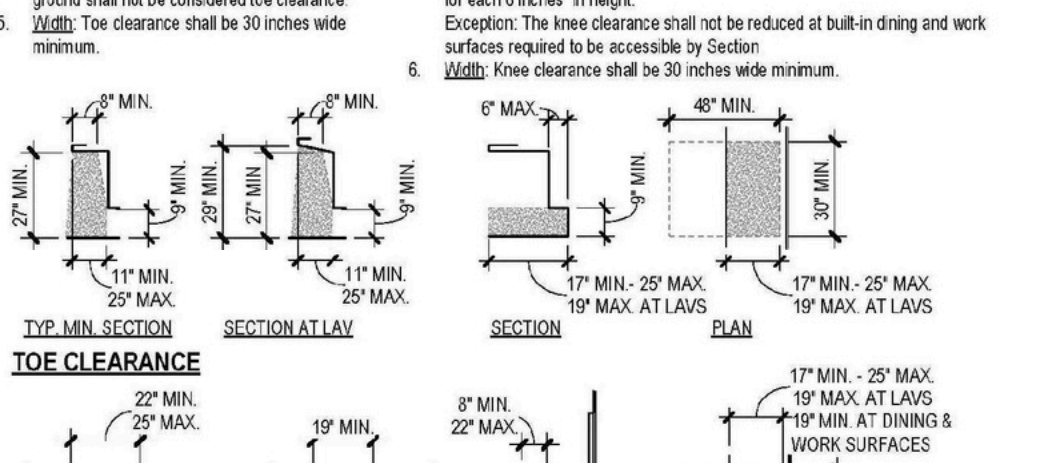
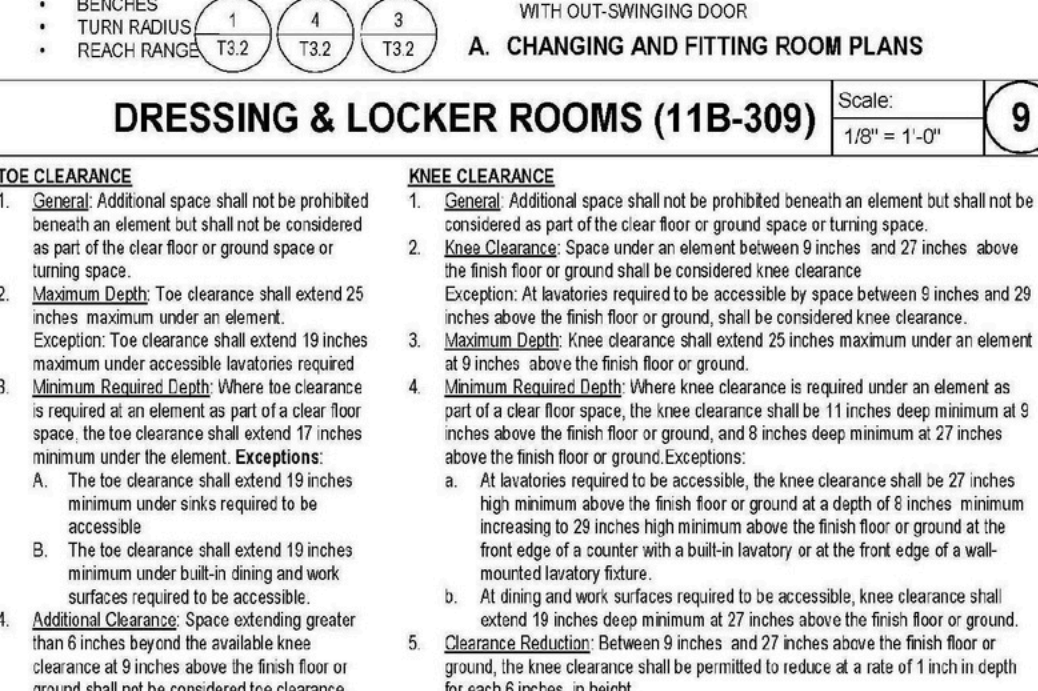


OPERABLE PARTS

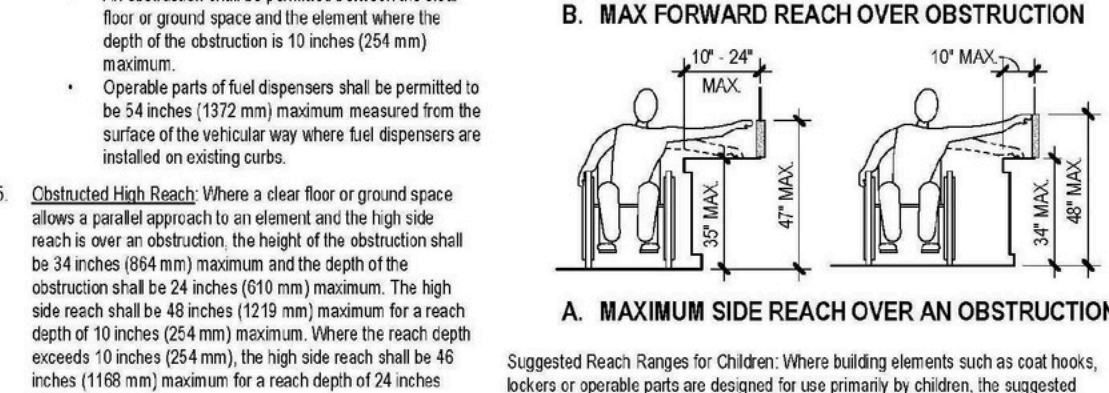
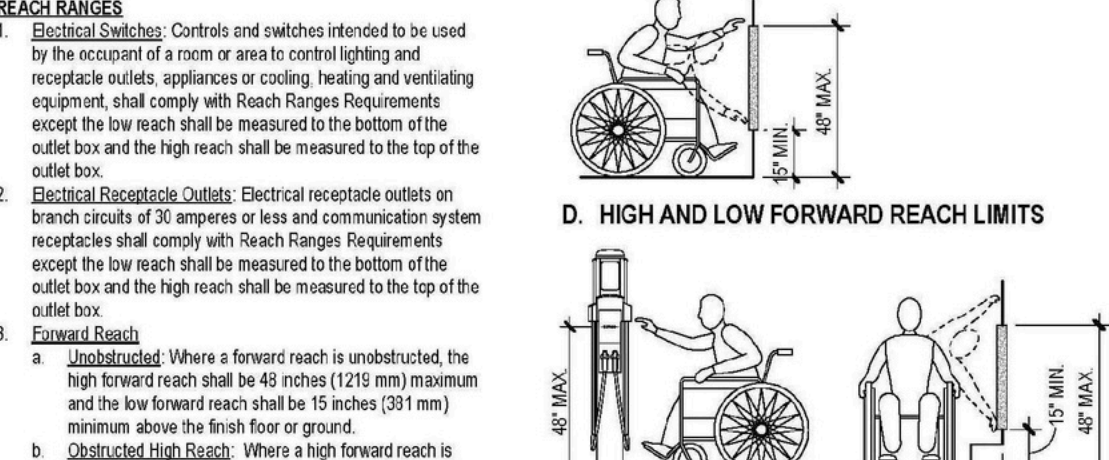
- Clear Floor Space:** A clear floor or ground space shall be provided.
- Reach Range:** Operable parts shall be placed within one or more of the accessible reach ranges.
- Operation:** Operable parts shall be operable with one hand and shall not require tight grasping, pinching or twisting of the wrist. The force required to activate operable parts shall be 5 pounds (22.2 N) maximum.

REACH RANGES

- Forward Reach:**
 - Unobstructed:** Where a forward reach is unobstructed, the high forward reach shall be 48 inches (1219 mm) maximum and the low forward reach shall be 15 inches (381 mm) minimum above the finish floor or ground.
 - Obstructed Sign Reach:** Where a high forward reach is over an obstruction, the clear floor space shall extend beneath the element for a distance not less than the required reach depth over the obstruction. The high forward reach shall be 48 inches (1219 mm) maximum where the reach depth is 29 inches (738 mm) maximum. Where the reach depth exceeds 29 inches (738 mm), the high forward reach shall be 44 inches (1118 mm) maximum and the reach depth shall be 25 inches (635 mm) maximum.
- Side Reach:**
 - Unobstructed:** Where a side reach is unobstructed, the high side reach shall be 48 inches (1219 mm) maximum and the low side reach shall be 15 inches (381 mm) minimum above the finish floor or ground.
 - Obstructed:** An obstruction shall be permitted between the clear floor or ground space and the element where the depth of the obstruction is 10 inches (254 mm) maximum. The high side reach shall be 44 inches (1118 mm) maximum and the reach depth shall be 25 inches (635 mm) maximum.

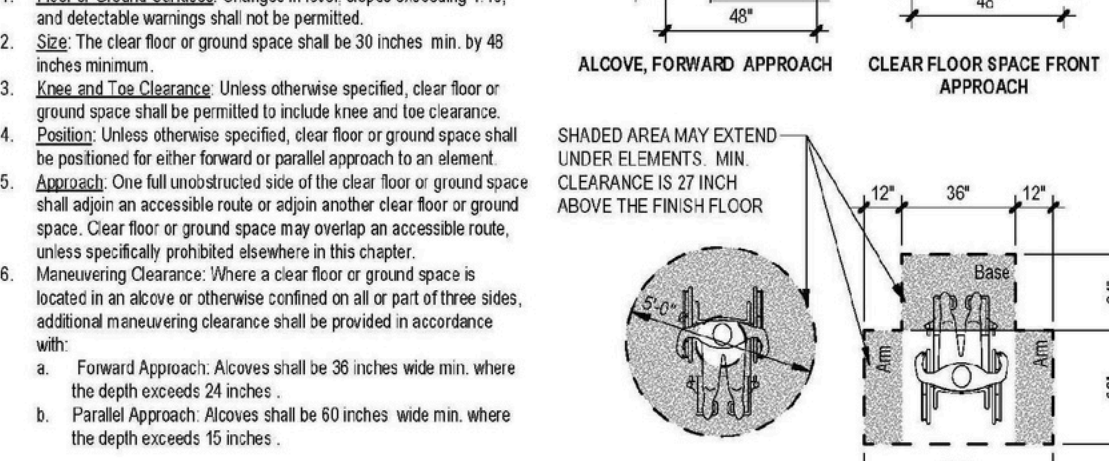
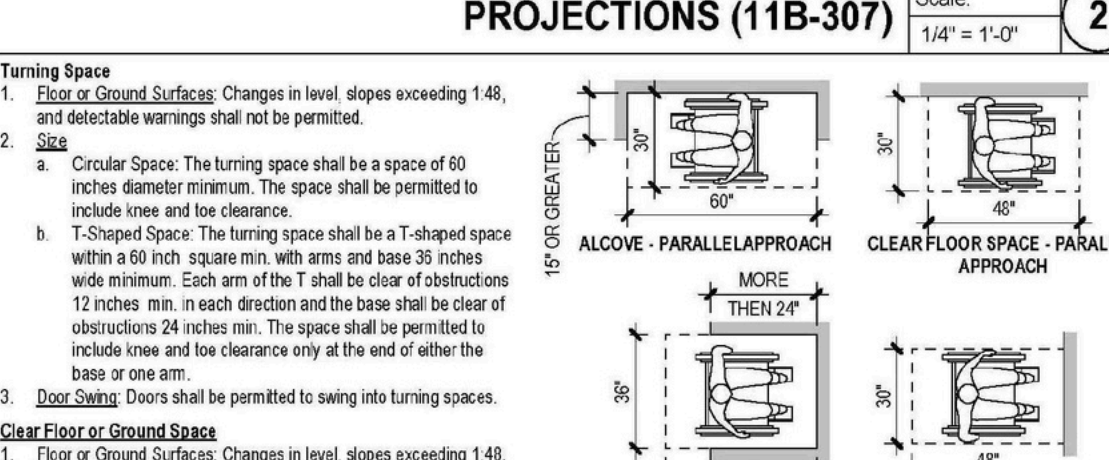
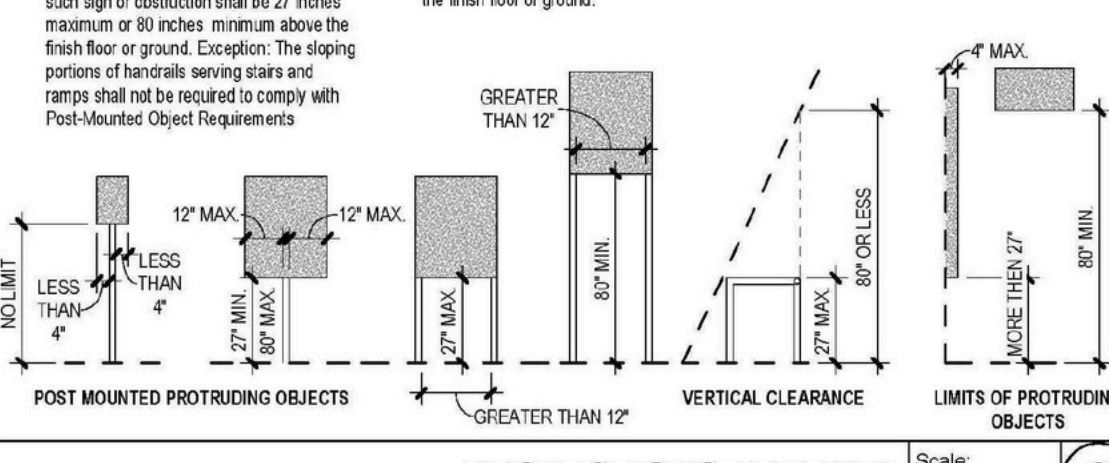
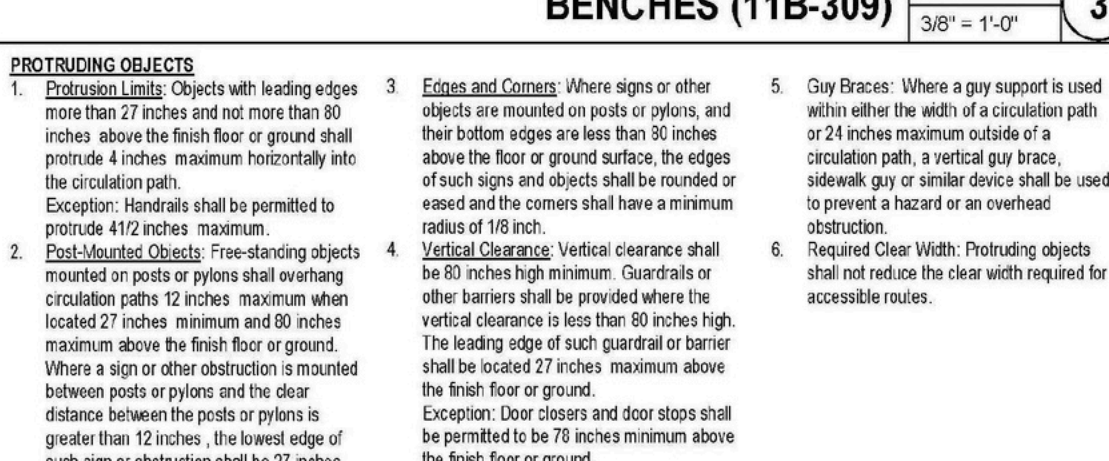
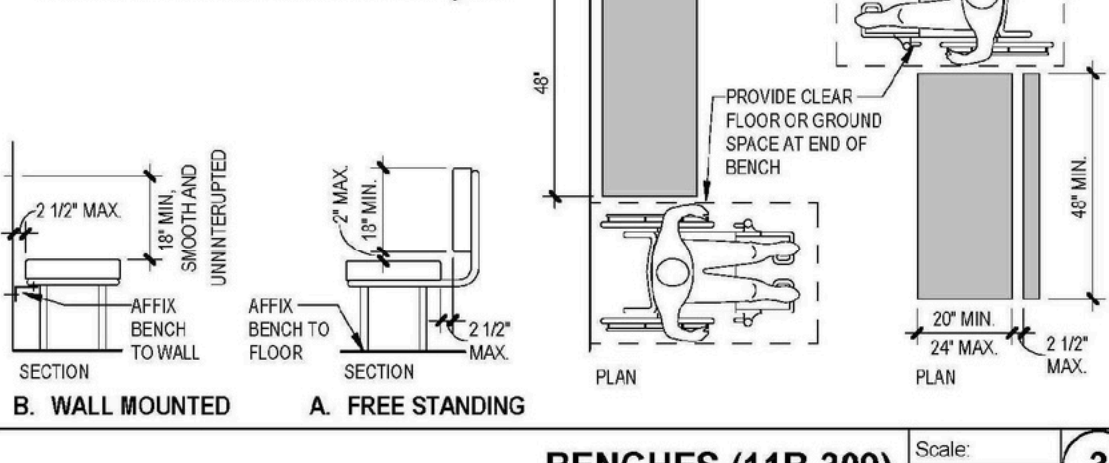
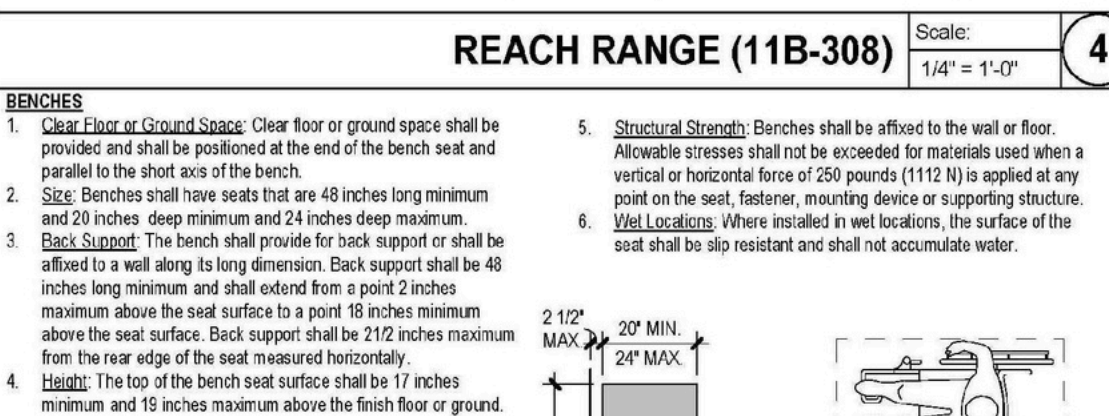


ACCESSIBLE ROUTE (11B-402 11B-403) Scale: 1/4" = 1'-0" **6**



SUGGESTED REACH RANGE FOR CHILDREN AGES 3 THROUGH 12

Forward or Side Reach (High Max)	Ages 3 and 4	Ages 5 through 8	Ages 9 through 12
44 inches	40 inches	36 inches	20 inches
44 inches	40 inches	36 inches	18 inches
44 inches	40 inches	36 inches	16 inches



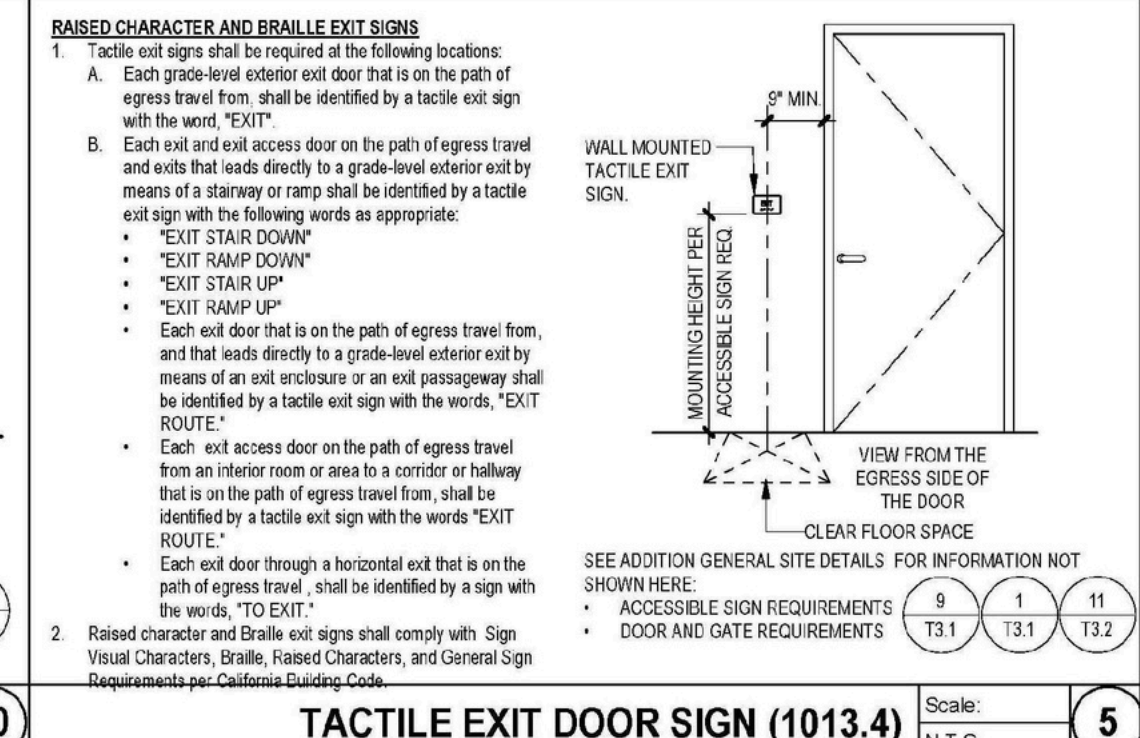
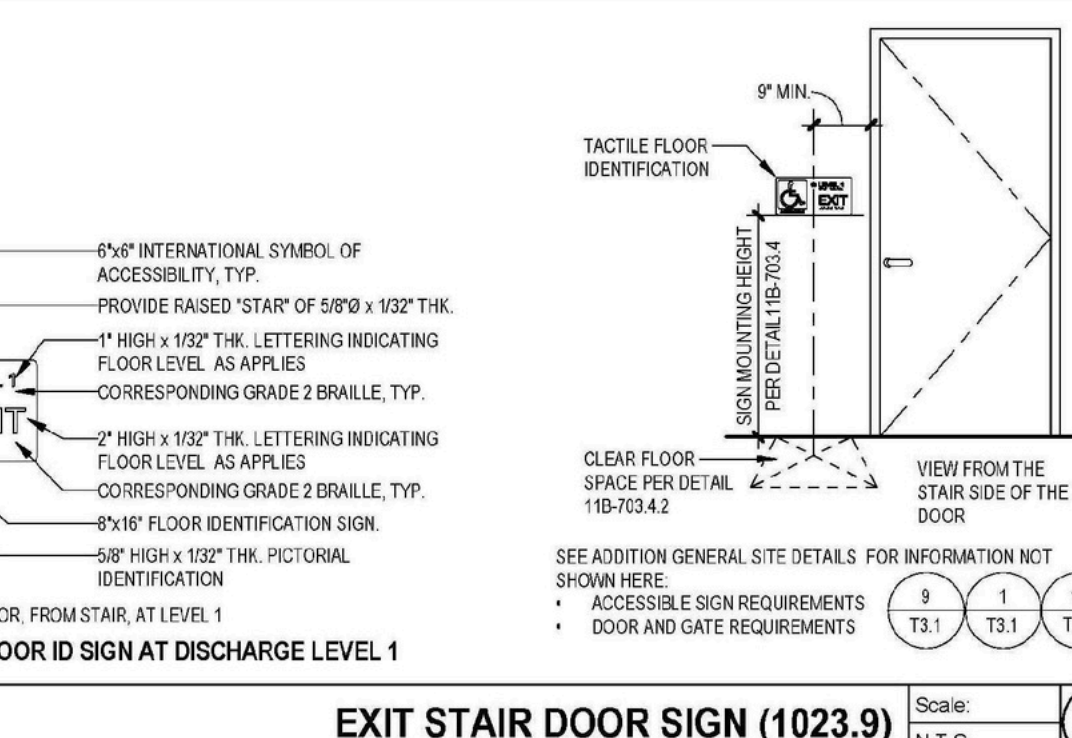
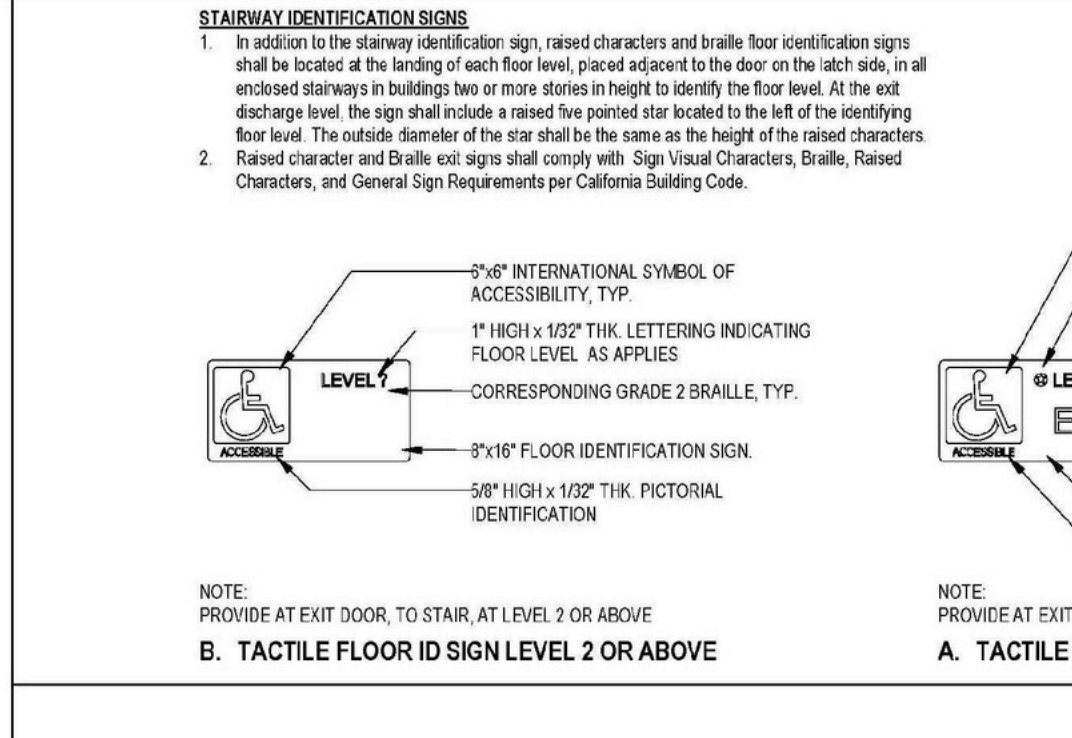
FLOOR & TURNING SPACE (11B-304 11B-305) Scale: 1/4" = 1'-0" **1**

ISSUED FOR CONSTRUCTION

REVISION	DATE	DESCRIPTION	CITY COMMENTS

SHEET TITLE
GENERAL NOTES
PROJECT NAME & LOCATION

SCALE	AS SHOWN
DRAWN BY	DB
CHECKED BY	NB
DATE	02-19-2026
PROJECT NO	C25-0010
G2	



SIGNS

General Exemption:

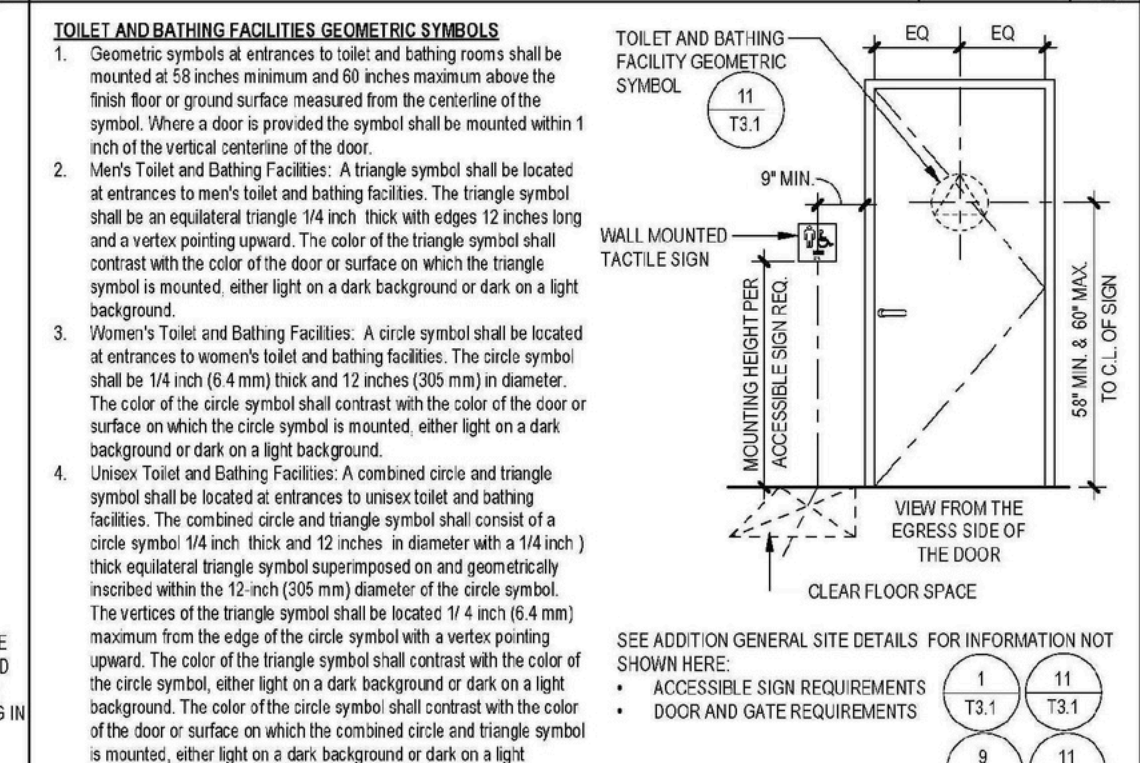
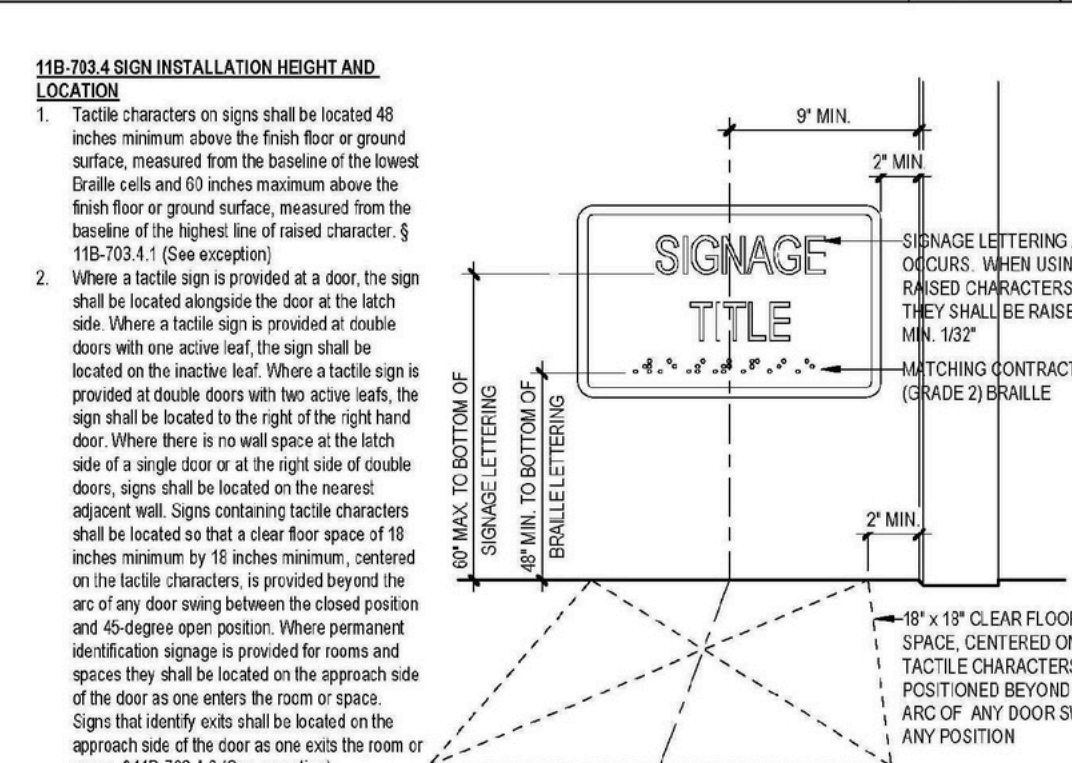
- Building directory, menu, seal and row designations in assembly areas, account names, building addresses, and company names and logos shall not be required to comply with this section.
- Temporary, 7 days or less, signs shall not be required to comply with this section.
- In detention and correctional facilities, signs not located in public use areas shall not be required to comply with this section.

Designations: Interior and exterior signs identifying permanent rooms and spaces shall comply with General Sign Requirements. Signs for temporary rooms and spaces shall comply with General Sign Requirements. Signs for temporary rooms and spaces shall comply with General Sign Requirements. Signs for temporary rooms and spaces shall comply with General Sign Requirements.

GENERAL SIGN REQUIREMENTS

General Requirements: Where both visual and tactile characters are required, either one sign with both visual and tactile characters or two separate signs, one visual, and one with tactile characters, shall be provided.

Sign Placement: Signs shall be placed in the most accessible location. Signs shall be placed in the most accessible location. Signs shall be placed in the most accessible location.



GENERAL SIGN REQUIREMENTS (CONT.)

Sign Placement: Signs shall be placed in the most accessible location. Signs shall be placed in the most accessible location. Signs shall be placed in the most accessible location.

Sign Design: Signs shall be designed to be easily readable. Signs shall be designed to be easily readable. Signs shall be designed to be easily readable.

VISUAL CHARACTER HEIGHT

Height to Visual Character	Minimum Character Height
Greater than 70 inches to less than or equal to 120 inches	5/8 inch
Greater than 120 inches	1/2 inch

ACCESSIBLE SIGN REQUIREMENTS (11B-703.4)

Sign Design: Signs shall be designed to be easily readable. Signs shall be designed to be easily readable. Signs shall be designed to be easily readable.

Sign Placement: Signs shall be placed in the most accessible location. Signs shall be placed in the most accessible location. Signs shall be placed in the most accessible location.

DOOR, DOORWAYS AND GATES

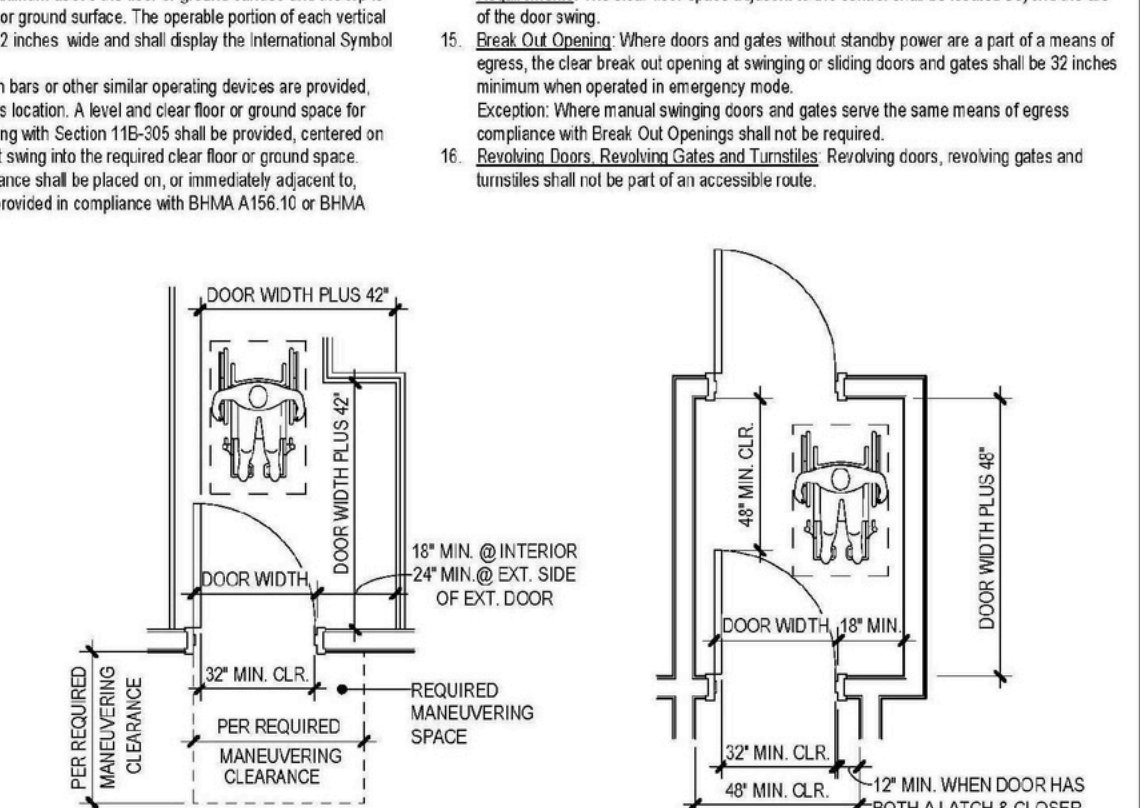
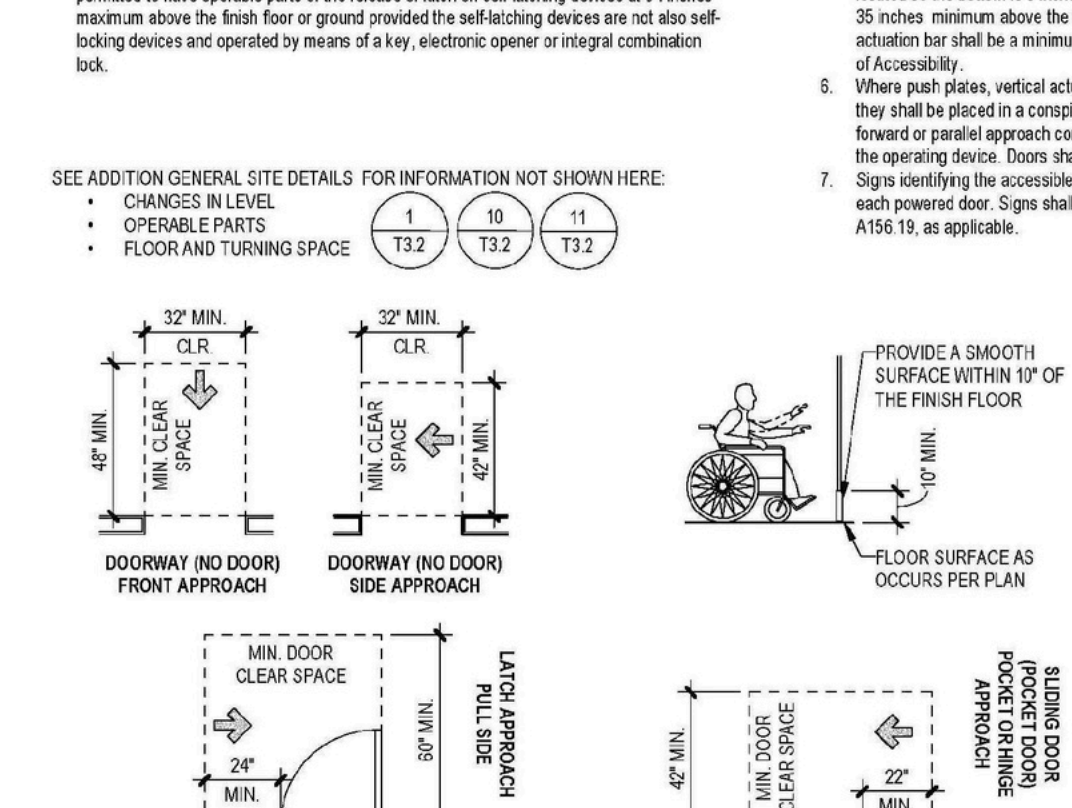
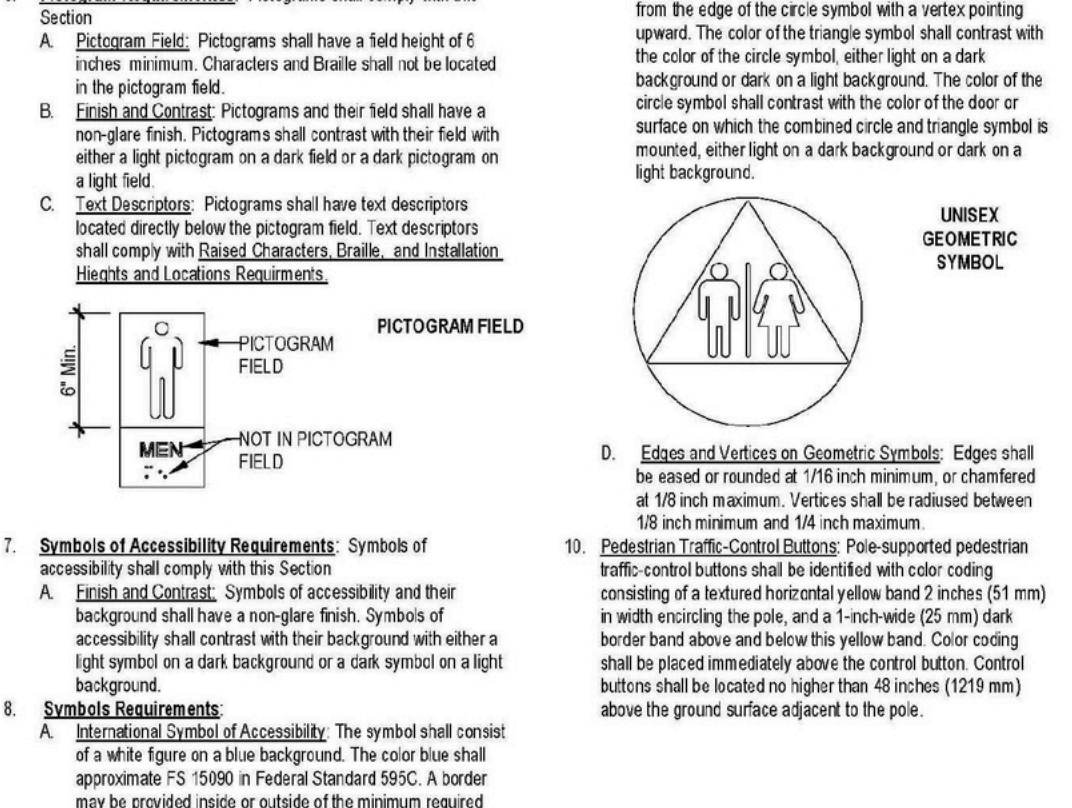
Door Design: Doors shall be designed to be easily operable. Doors shall be designed to be easily operable. Doors shall be designed to be easily operable.

Door Placement: Doors shall be placed in the most accessible location. Doors shall be placed in the most accessible location. Doors shall be placed in the most accessible location.

GENERAL SIGN REQUIREMENTS (CONT.)

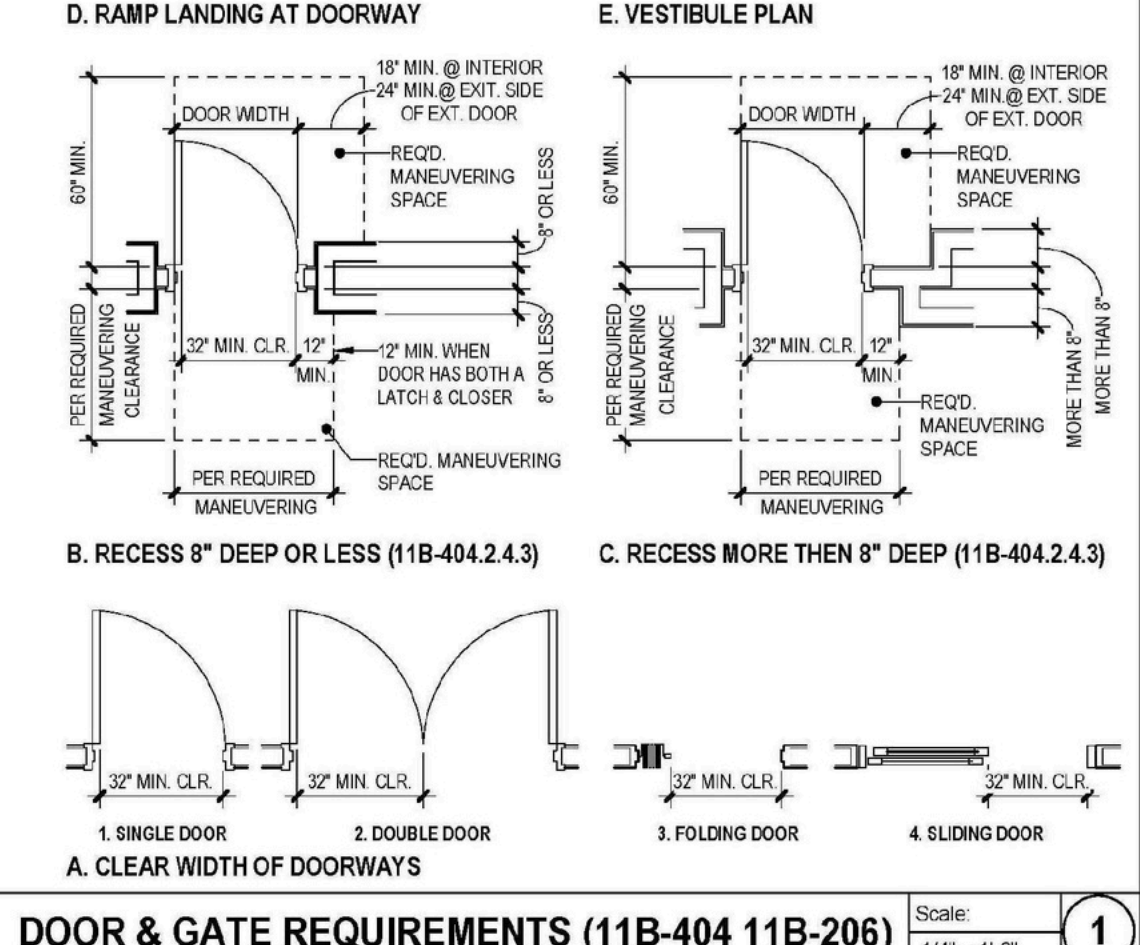
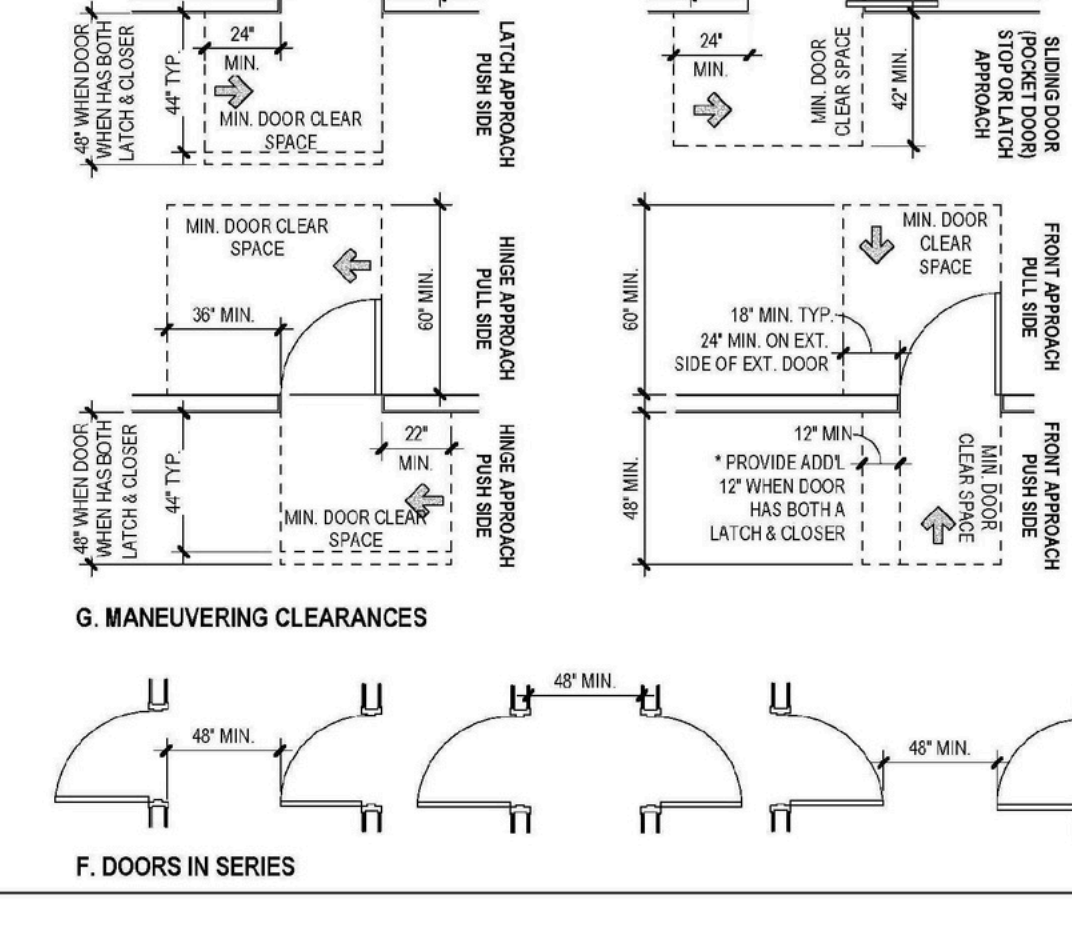
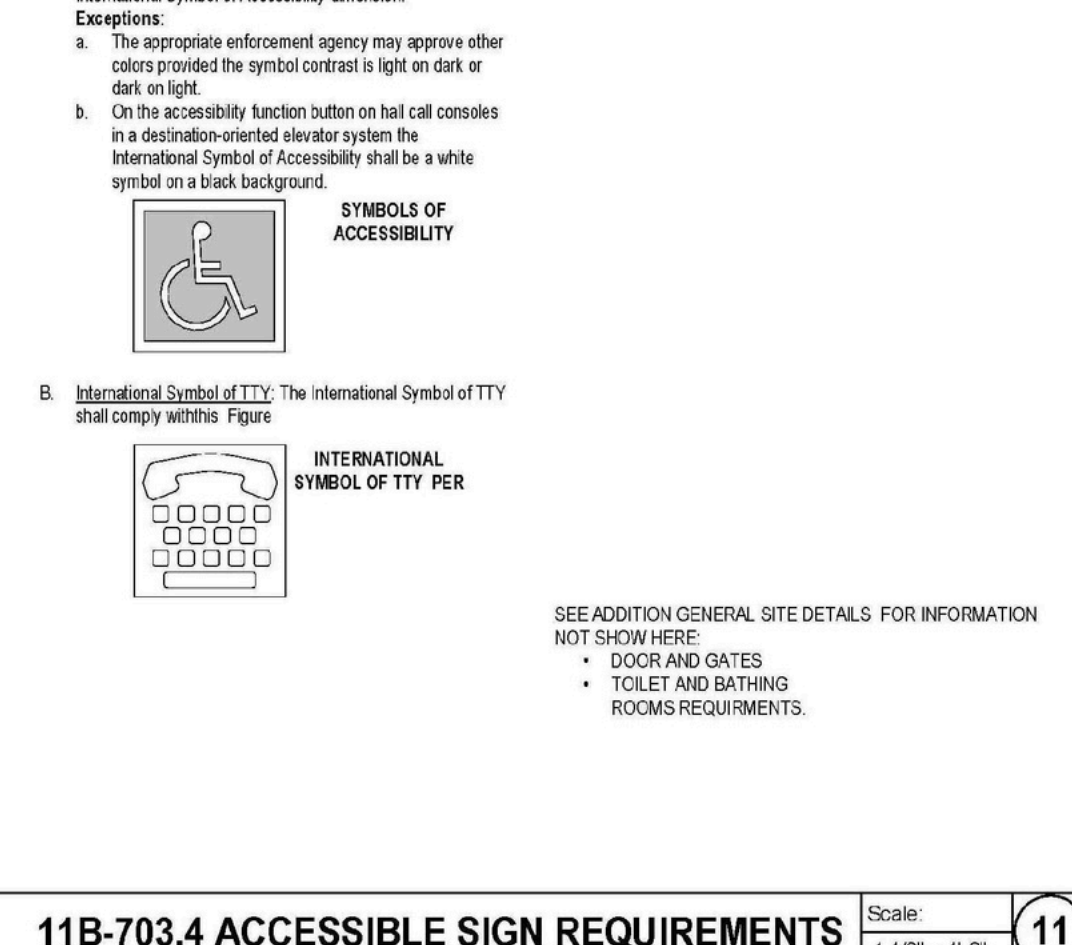
Sign Placement: Signs shall be placed in the most accessible location. Signs shall be placed in the most accessible location. Signs shall be placed in the most accessible location.

Sign Design: Signs shall be designed to be easily readable. Signs shall be designed to be easily readable. Signs shall be designed to be easily readable.



BRILLE MEASUREMENT TABLE

Measurement Range	Minimum in inches	Maximum in inches
Dot Base Diameter	0.025 (1.5 mm)	0.063 (1.6 mm)
The Same Cell	0.100 (2.5 mm)	0.150 (3.8 mm)
Distance Between Two Dots in the Same Cell	0.300 (7.6 mm)	0.350 (8.9 mm)
Distance Between Corresponding Dots in Adjacent Cells	0.025 (0.6 mm)	0.037 (0.9 mm)
Dot Height	0.025 (0.6 mm)	0.037 (0.9 mm)
Distance Between Corresponding Dots in Adjacent Cells	0.250 (6.3 mm)	0.400 (10.2 mm)



11B-703.4 ACCESSIBLE SIGN REQUIREMENTS

DOOR & GATE REQUIREMENTS (11B-404 11B-206)