

FOR CONSTRUCTION

SHEET TITLE
REFLECTED CEILING PLAN
PROJECT NAME & LOCATION

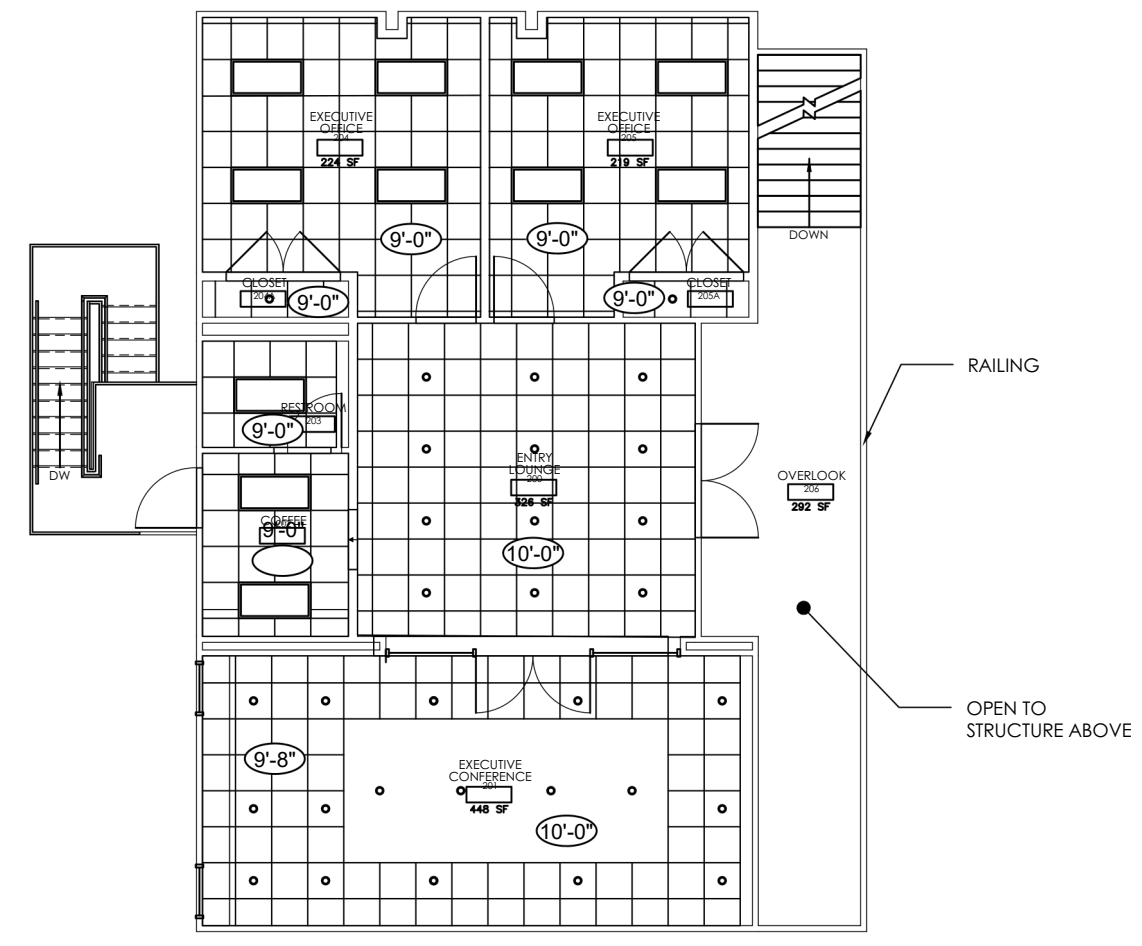
SCALE AS SHOWN	
DRAWN BY NB/DB	PROJECT NO C25-0001
CHECKED BY	A2HEET
DATE 02-23-2026	

BY	
DATE	02-23-2026
REVISION	
DESCRIPTION	OWNER REVISIONS

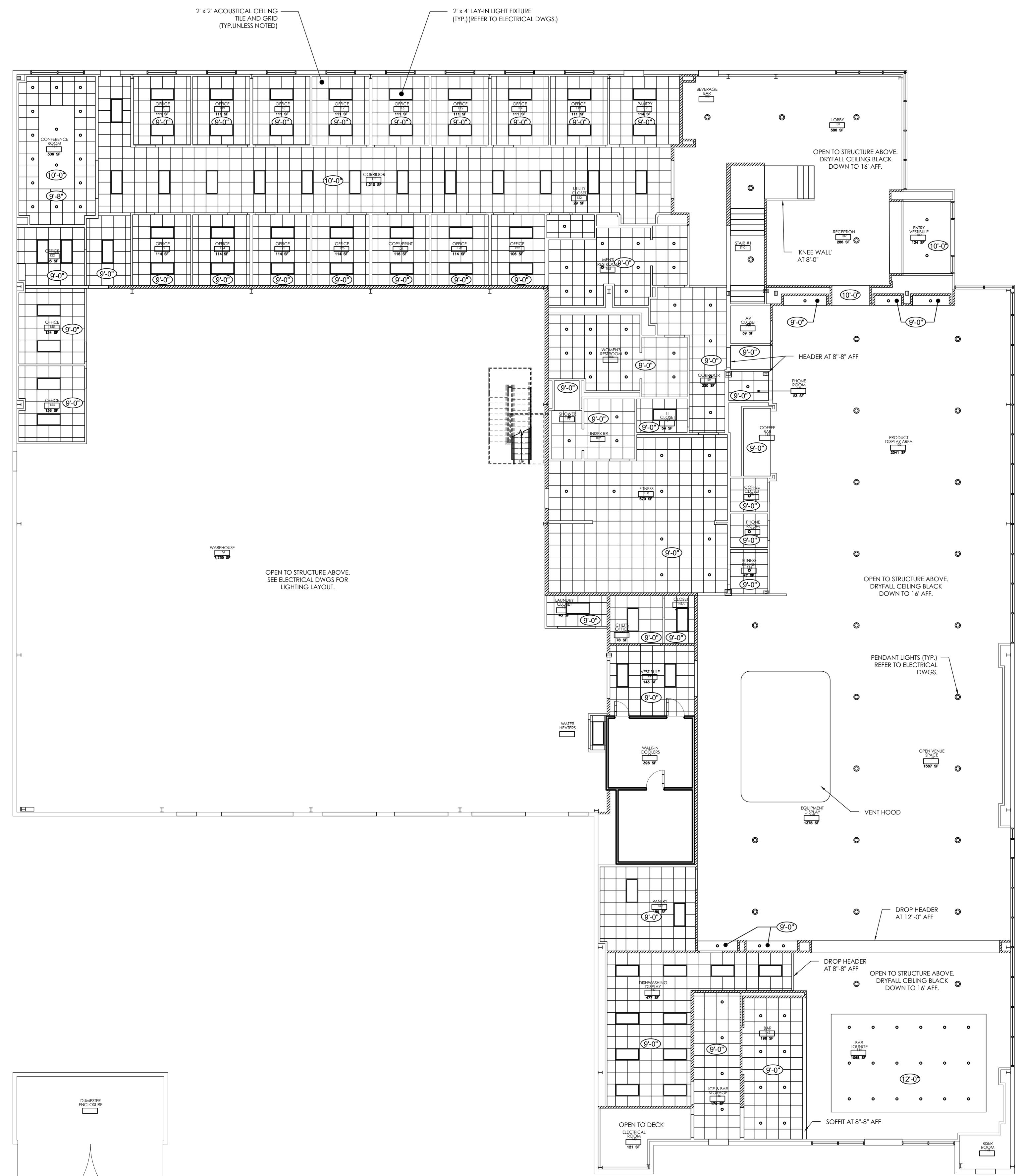
WALL LEGEND	
	METAL BUILDING GIRT
	METAL STUD WALL (3 5/8" UNLESS DIMENSIONED OTHERWISE)
	WALLS EXTEND TO UNDERSIDE OF DECK

RCP LEGEND	
	CEILING HEIGHT
	PENDANT LIGHTS, TYP. REFER TO ELECTRICAL DWGS.
	4" RECESSED LIGHTS, TYP. REFER TO ELECTRICAL DWGS.
	2x4" LAY-IN LIGHT FIXTURE, TYP. REFER TO ELECTRICAL DWGS.
	2x2" ACOUSTICAL CEILING TILE AND GRID, TYP.
	SEMI-RECESSED FIRE EXTINGUISHER CABINET SUPPLY AIR DIFFUSER
	RETURN AIR DIFFUSER
	EXIT SIGN

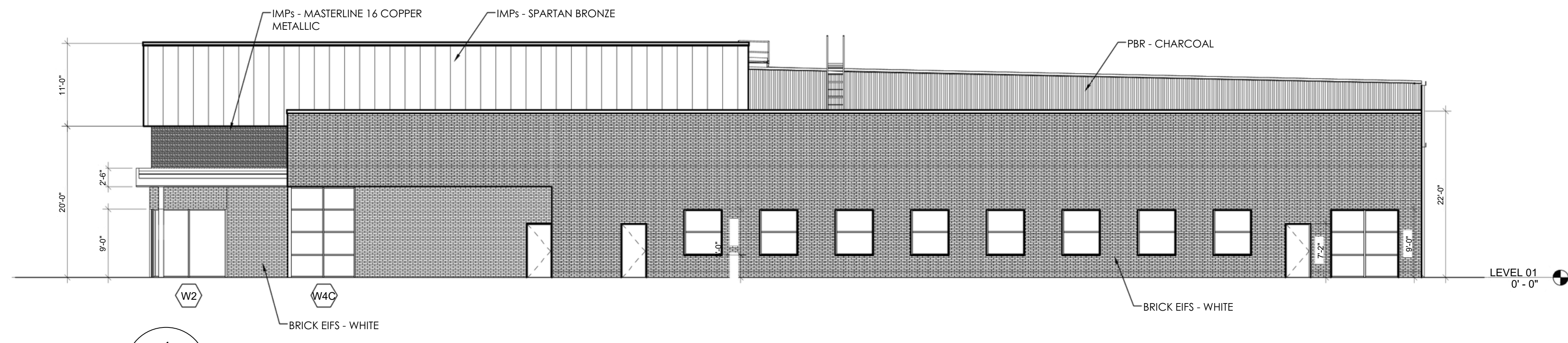
- RCP GENERAL NOTES
- REFER TO STRUCTURAL, MECHANICAL, PLUMBING, ELECTRICAL, AND FIRE PLANS FOR ADDITIONAL INFORMATION NOT SHOWN ON THIS PLAN.
 - SEE TENANT IMPROVEMENT DRAWINGS UNDER SEPARATE PERMIT FOR INFORMATION NOT SHOWN IN THESE PLANS. PRIOR TO CONSTRUCTION CONTRACTOR TO OBTAIN TENANT'S LATEST CRITERIA DRAWINGS AND / OR TENANT IMPROVEMENTS DRAWINGS FOR EXACT LOCATION OF ALL PLUMBING, MECHANICAL AND ELECTRICAL ROUGH-IN, STUB-UPS, ETC. PRIOR TO CONSTRUCTION.
 - SEE ASSEMBLY SHEETS FOR COMPLETE WALL, FLOOR, & ROOF ASSEMBLY INFORMATION.
 - ALL CONDUIT, HANGERS, PIPING, CEILING TRACKS, ETC., SHALL NOT BE ATTACHED TO THE ROOF DECK ATTACH TO STRUCTURAL MEMBERS ONLY.
 - ALL UTILITIES, INCLUDING CONDUITS AND PIPING, SHALL BE HELD TIGHT TO THE UNDERSIDE OF THE FLOOR DECK OR ROOF DECK AND SLEEVE THRU CONCRETE BEAMS WHENEVER POSSIBLE.
 - CONTRACTOR SHALL SEAL ALL PENETRATIONS AT FIRE RESISTIVE CONSTRUCTION WITH APPROVED FIRE ASSEMBLIES.
 - CONTRACTOR SHALL SEAL ALL PENETRATIONS INTO SOUND RATED ASSEMBLIES WITH APPROVED RESILIENT ACOUSTIC SEALANT. ALL RECESSED ITEMS SHALL BE SEALED TO MAINTAIN INTEGRITY OF THE ACOUSTIC ASSEMBLY.
 - CONTRACTOR SHALL REFER TO MECHANICAL DRAWINGS FOR OPENINGS, DUCTS AND VENTS NOT SHOWN ON THIS REFLECTED CEILING PLAN.
 - CONTRACTOR SHALL REFER TO PLUMBING DRAWINGS FOR PLUMBING VENTS AND PIPES NOT SHOWN ON THIS REFLECTED CEILING PLAN.
 - CONTRACTOR SHALL REFER TO ELECTRICAL DRAWINGS FOR CONDUIT RUNS, EQUIPMENT, AND LIGHTING FIXTURE INFORMATION NOT SHOWN ON THIS REFLECTED CEILING PLAN.
 - CONTRACTOR SHALL REFER TO FIRE SPRINKLER AND FIRE ALARM PLANS FOR ADDITIONAL INFORMATION NOT SHOWN ON THIS REFLECTED CEILING PLAN.



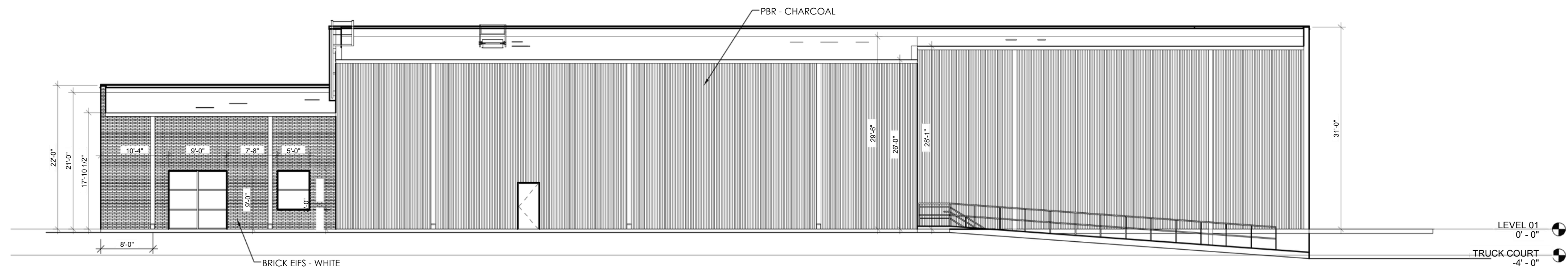
2 RCP - MEZZANINE
SCALE: 3/32" = 1'-0"



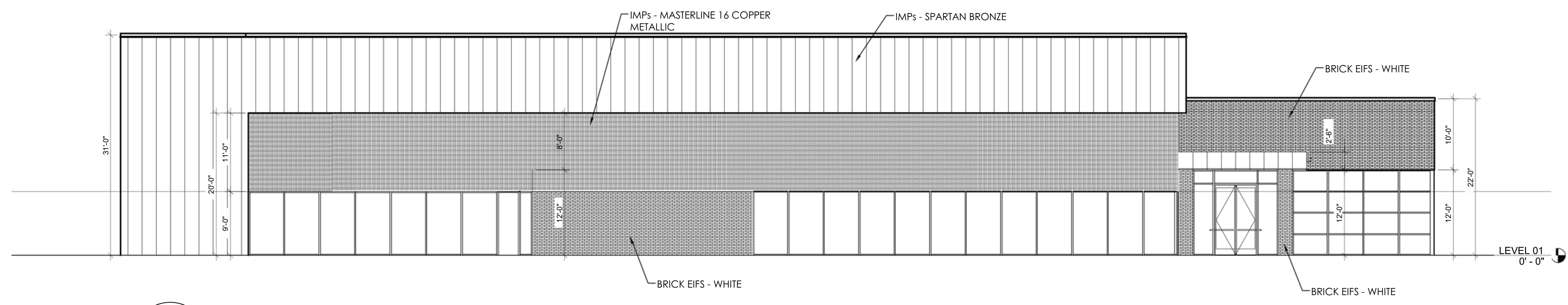
1 RCP - MAIN LVL
SCALE: 3/32" = 1'-0"



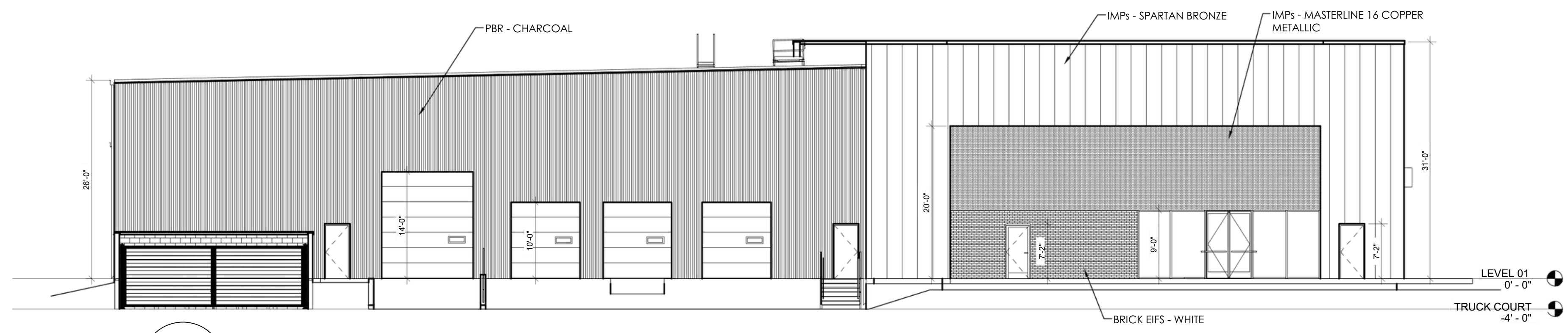
1 ELEVATION 1
A3 SCALE: 3/32" = 1'-0"



2 ELEVATION 2
A3 SCALE: 3/32" = 1'-0"



3 ELEVATION 3
A3 SCALE: 3/32" = 1'-0"



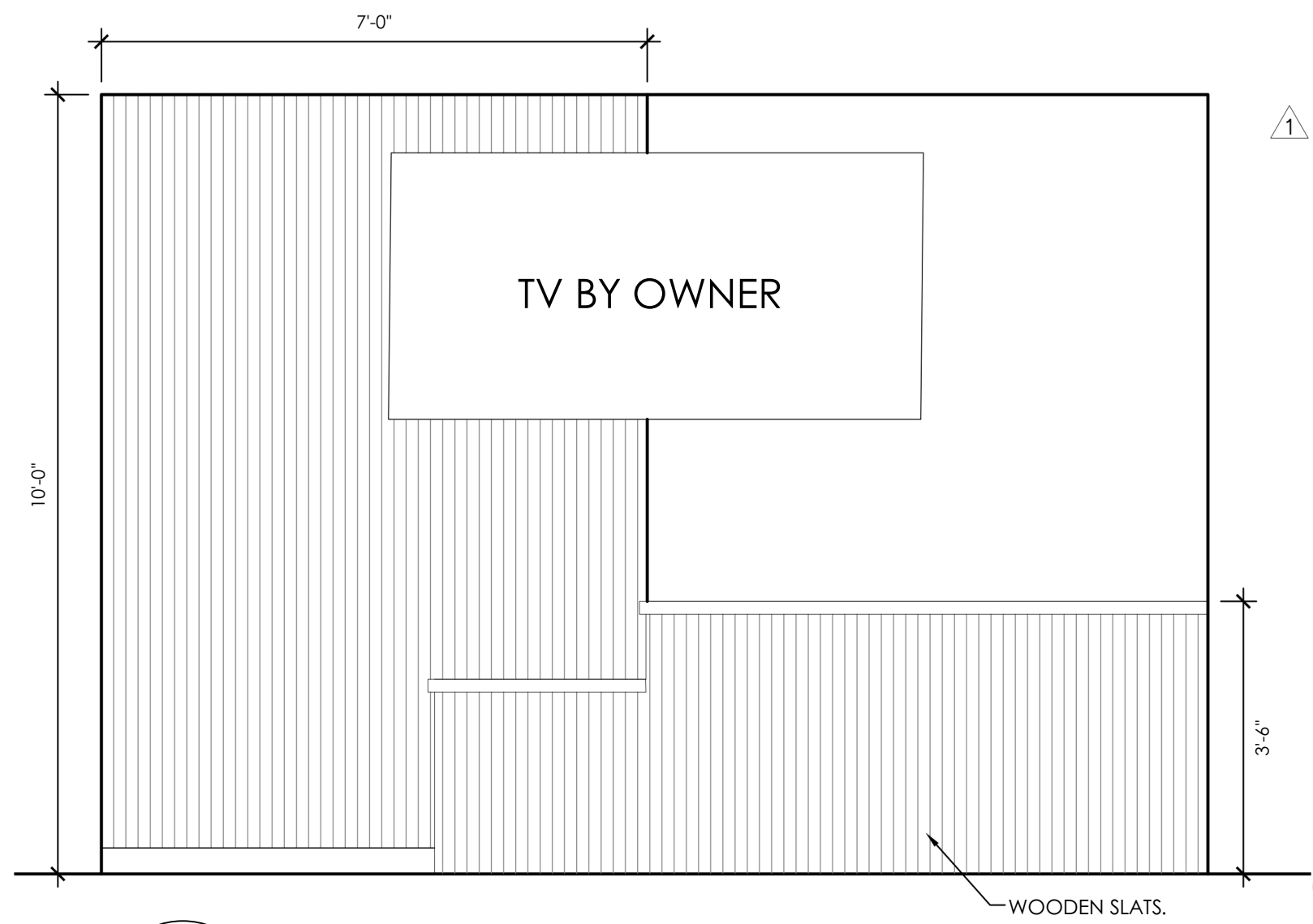
4 ELEVATION 4
A3 SCALE: 3/32" = 1'-0"

FOR CONSTRUCTION

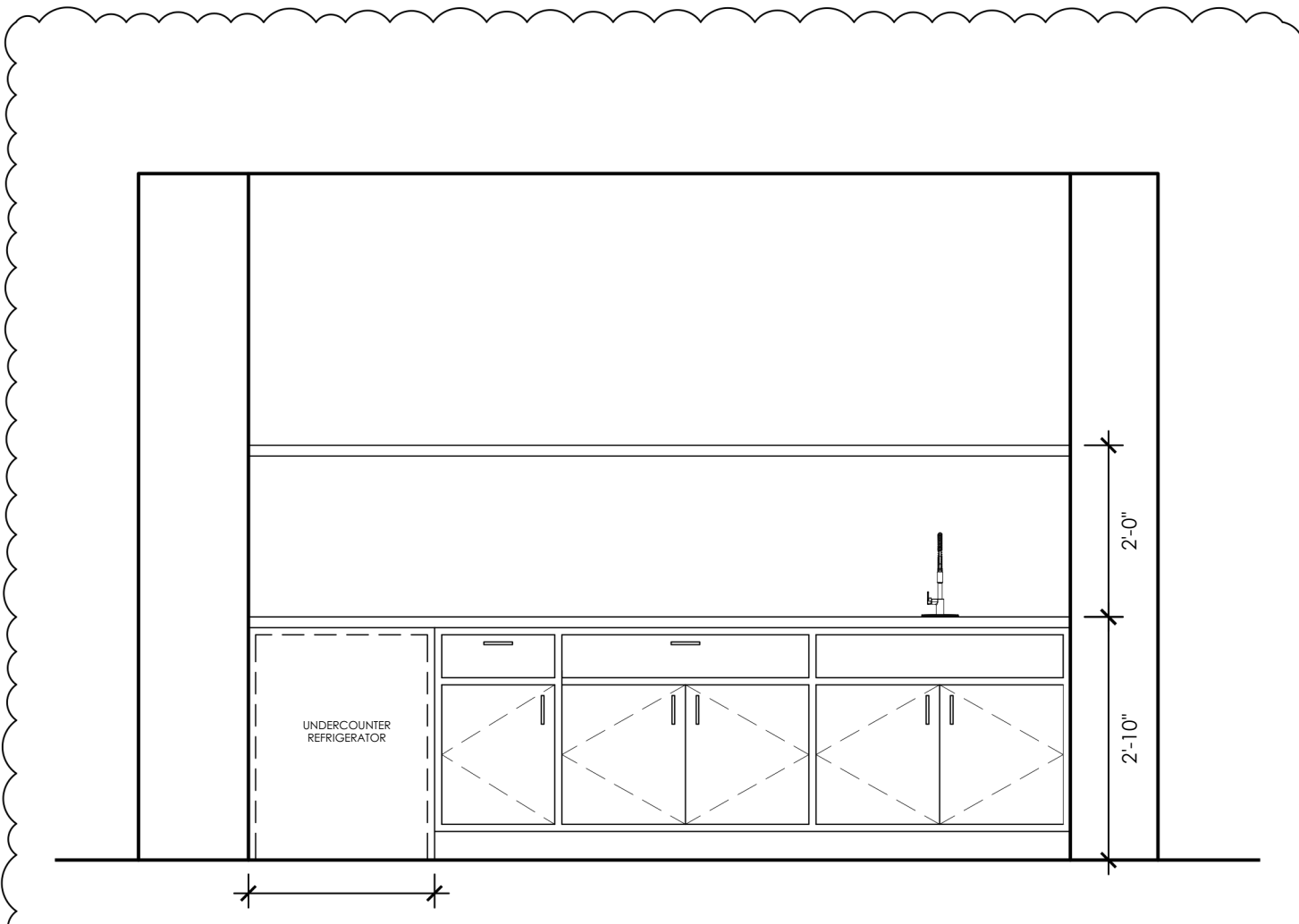
REVISION	DATE	DESCRIPTION
1	02-23-2026	OWNER REVISIONS

SHEET TITLE
EXTERIOR ELEVATIONS
PROJECT NAME & LOCATION

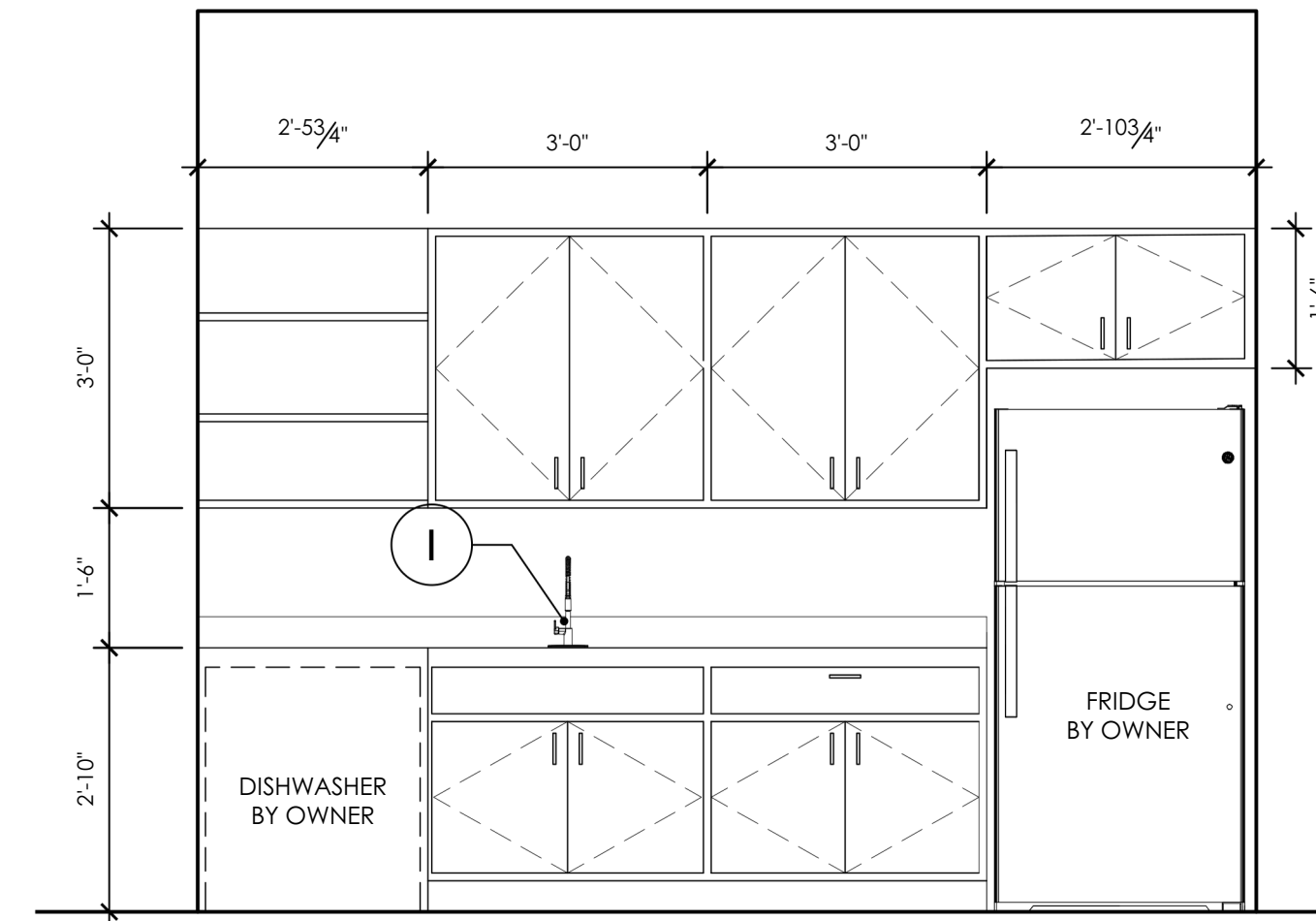
SCALE AS SHOWN	
DRAWN BY NB/DB	PROJECT NO C25-0001
CHECKED BY	SHEET A3
DATE 02-23-2026	



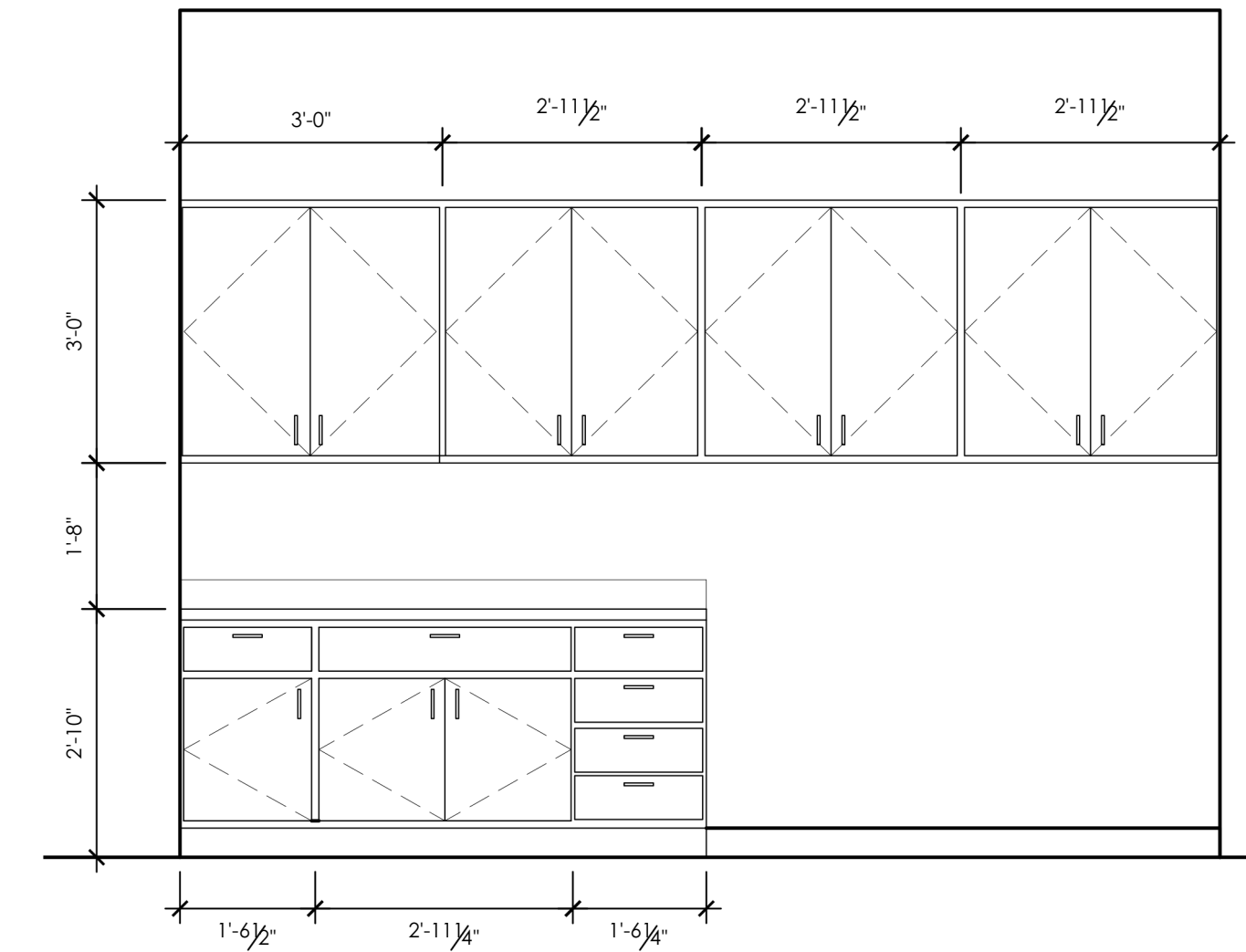
1 RECEPTION 102
A5.1 SCALE: 1/2" = 1'-0"



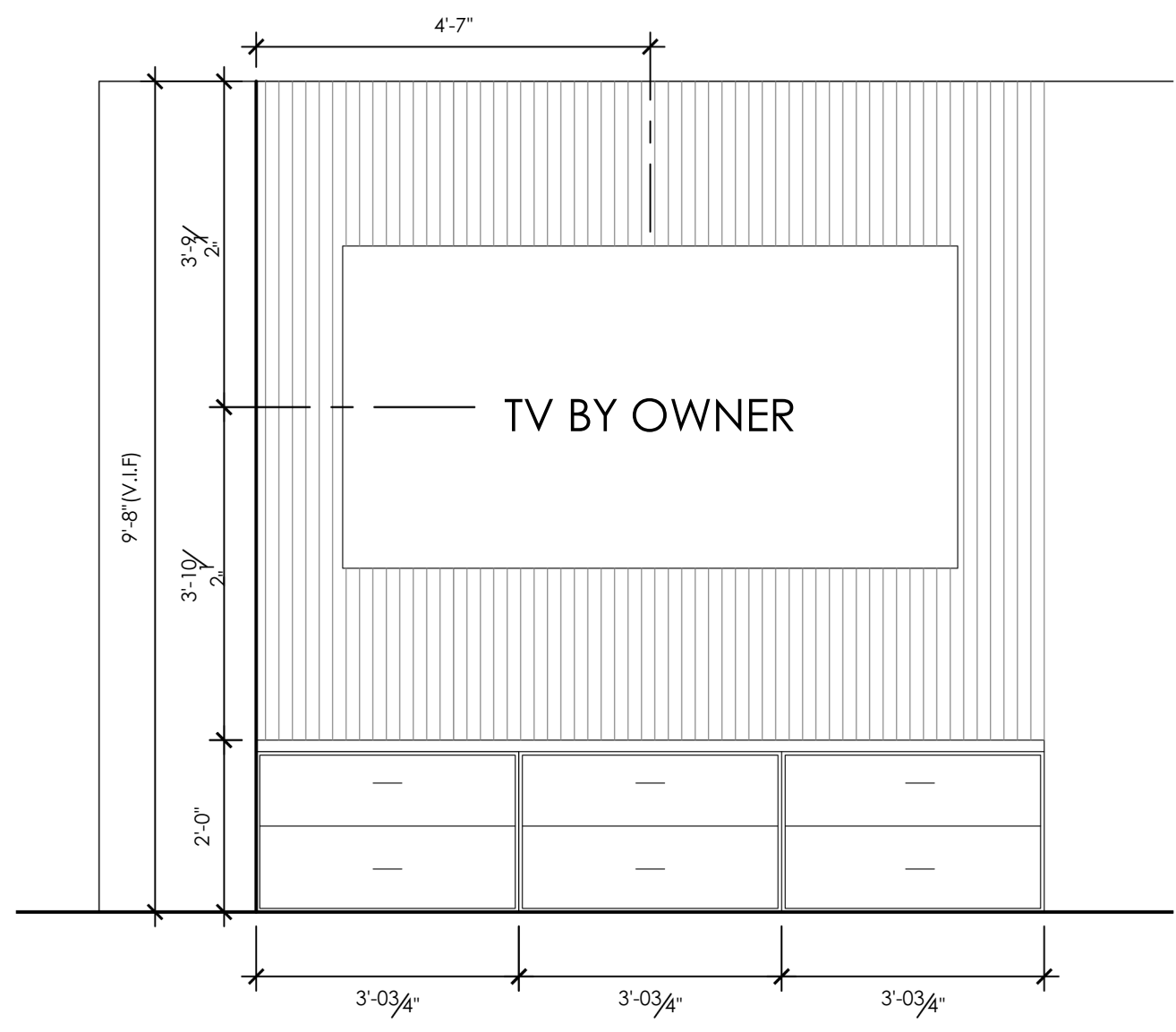
2 BEVERAGE BAR 102
A5.1 SCALE: 1/2" = 1'-0"



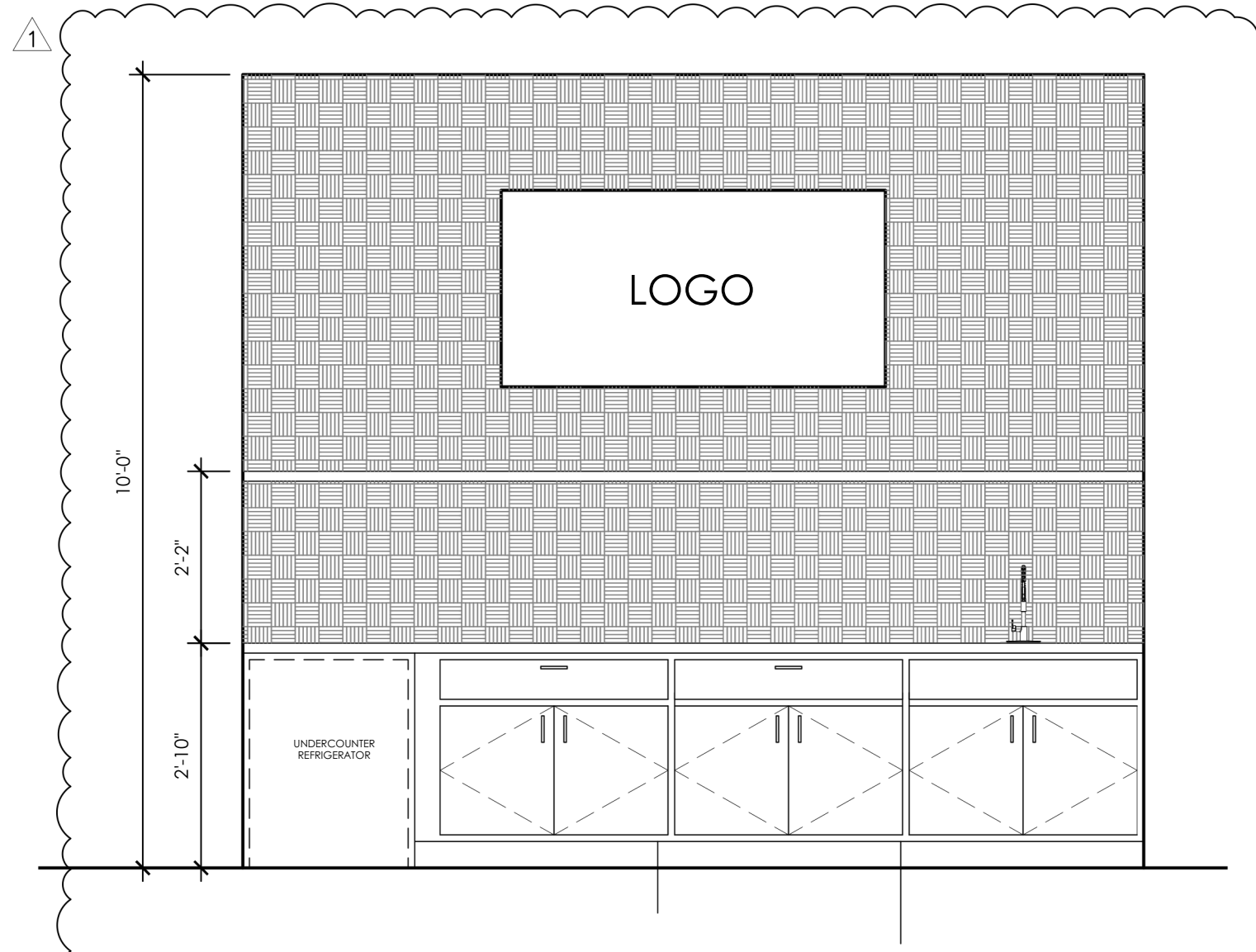
3 PANTRY 112
A5.1 SCALE: 1/2" = 1'-0"



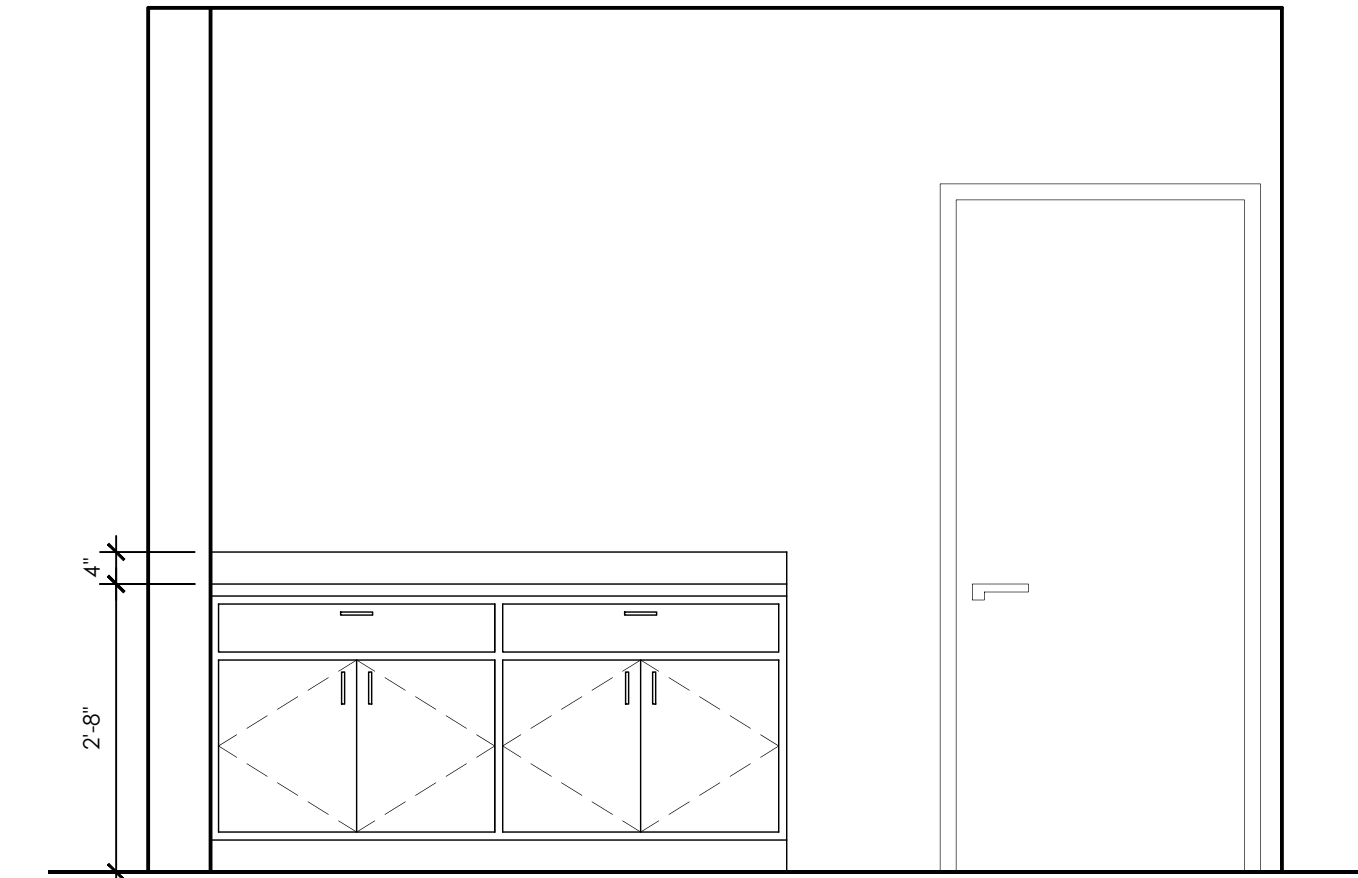
4 COPY/PRINT 123
A5.1 SCALE: 1/2" = 1'-0"



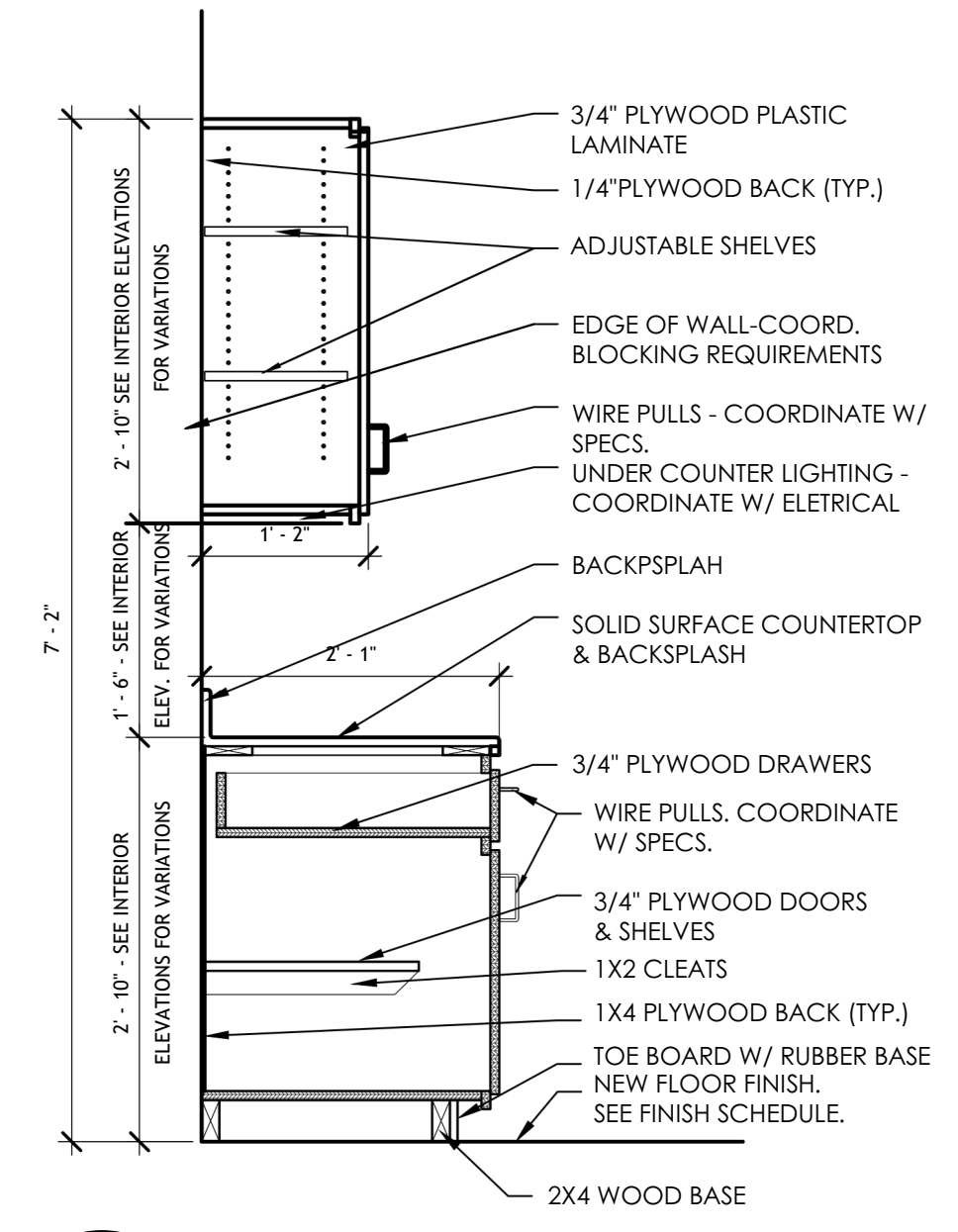
5 CONFERENCE ROOM 121
A5.1 SCALE: 1/2" = 1'-0"



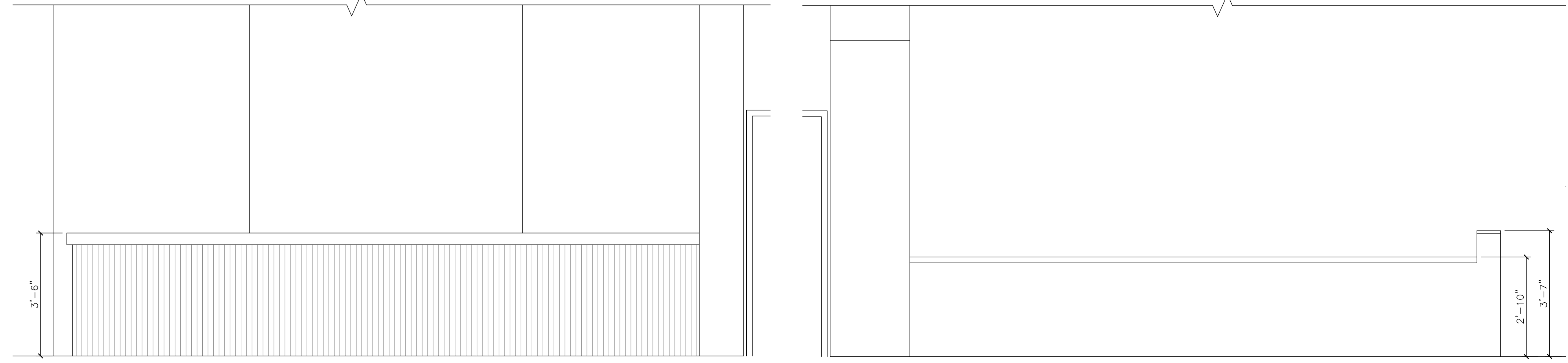
6 COFFEE BAR
A5.1 SCALE: 1/2" = 1'-0"



7 FITNESS
A5.1 SCALE: 1/2" = 1'-0"



10 CABINET SECTION
A5.1 SCALE: 3/4" = 1'-0"



8 BAR 145
A5.1 SCALE: 1/2" = 1'-0"

9 EQUIPMENT DISPLAY 138 - 4
A5.1 SCALE: 1/2" = 1'-0"

PLUMBING SCHEDULE		
	ITEM DESCRIPTION	MODEL
Ⓐ	WATER CLOSET W/FLUSHVALVE	A.S AFWALL(2856016.020)
Ⓑ	URINALS	KOHLER (K-4991-ET)
Ⓒ	LAVATORY	PRO FLO (PF194RWH)
Ⓓ	FAUCET	DELTA (520-TP-DST)
Ⓔ	MOP SINK	PROFLO (PFMB2424)
Ⓚ	WATER FOUNTAIN	ELKAY (EZSTLBSLK)
Ⓛ	MOP RACK - 4 HOLDERS ON 3" STAINLESS STEEL TRACK	BRADLEY (995-4)
Ⓜ	NOT USED	
Ⓝ	DOUBLE-BASIN SINK	KOHLER (K-5267-1-NA)

NOTE: MODELS ARE THE BASIS OF DESIGN FOR QUALITY AND FUNCTION. FURNISH SPECIFIED MODEL OR EQUAL.

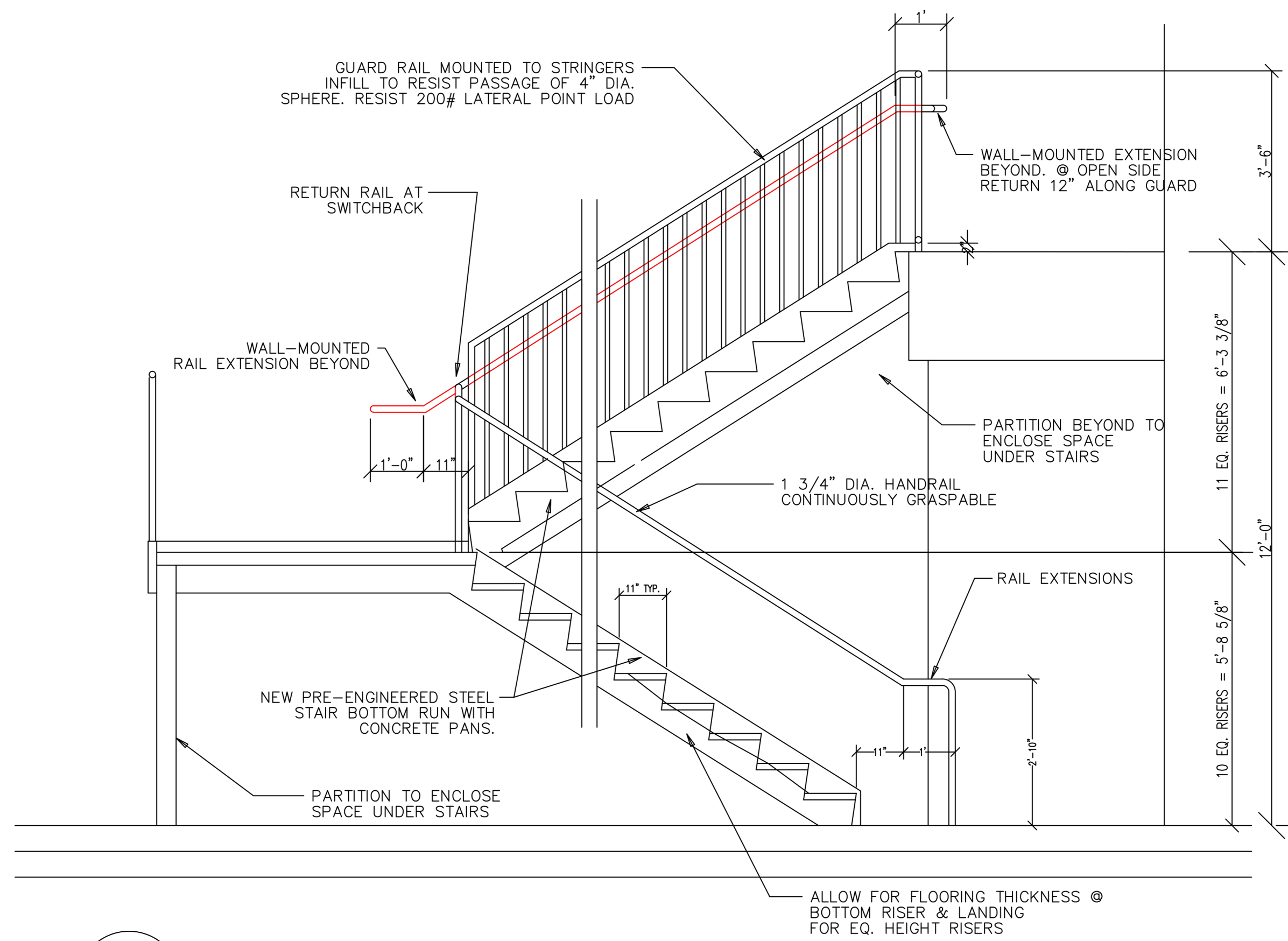


FOR CONSTRUCTION

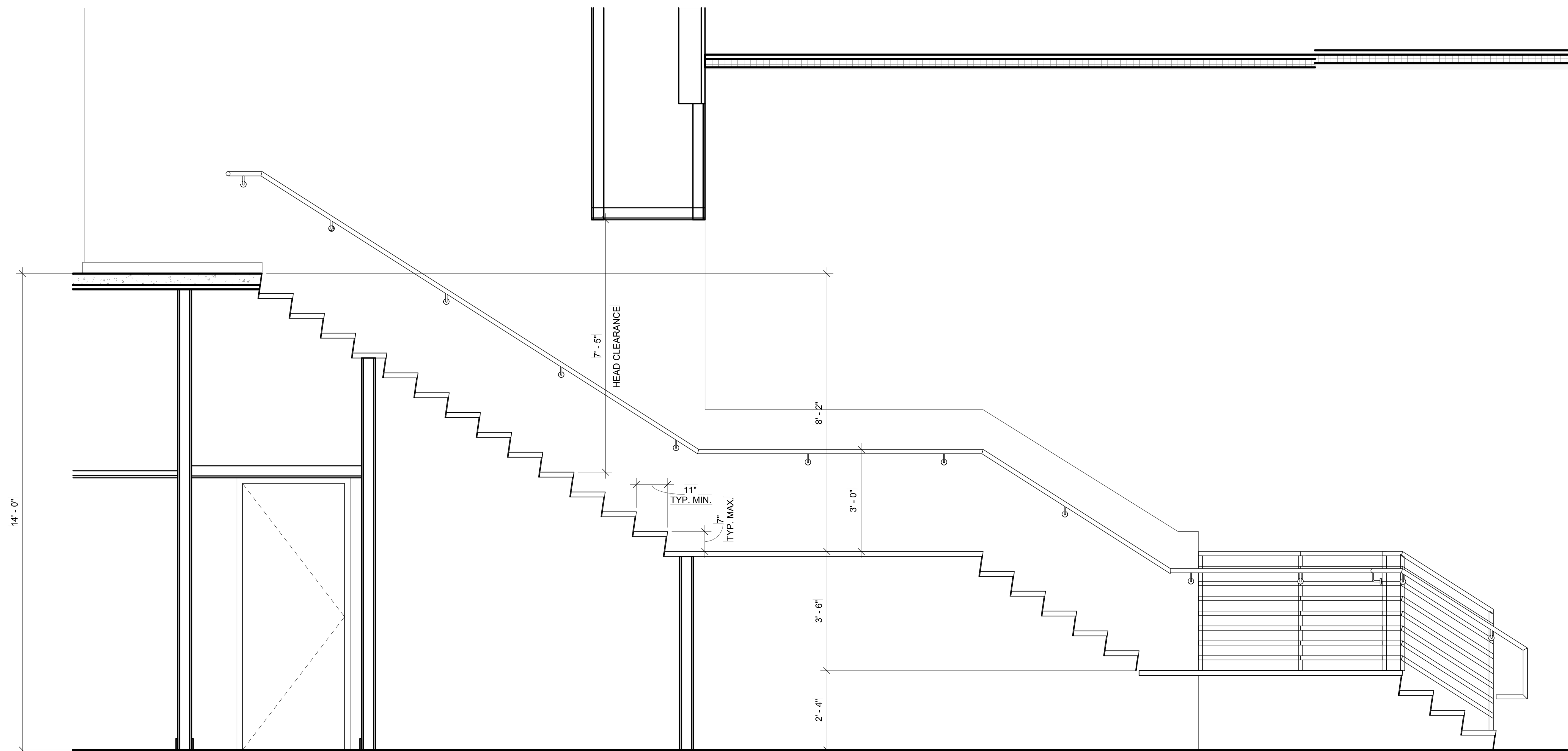
REVISION	DATE	DESCRIPTION
1	02-23-2026	OWNER REVISIONS

SHEET TITLE
INTERIOR ELEVATIONS
PROJECT NAME & LOCATION

SCALE AS SHOWN	
DRAWN BY NB/DB	PROJECT NO C25-0001
CHECKED BY	A5.1
DATE 02-23-2026	



1 WAREHOUSE METAL STAIRS
A5.2 SCALE: 1/2" = 1'-0"



2 INTERIOR STAIRS SECTION
A5.2 SCALE: 1/2" = 1'-0"



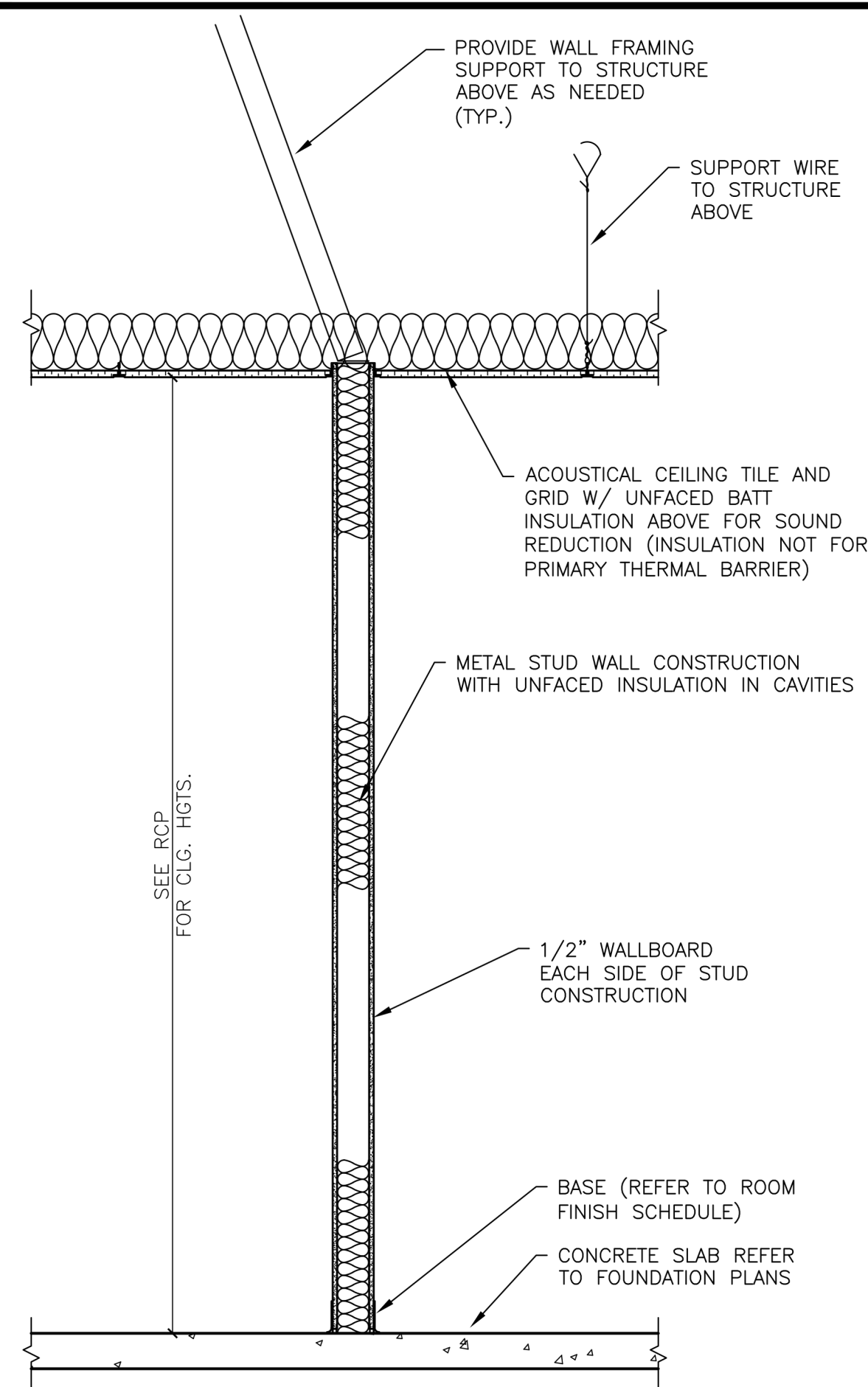
FOR CONSTRUCTION

REVISION	DATE	DESCRIPTION
1	02-23-2026	OWNER REVISIONS

SHEET TITLE
STAIR DETAILS

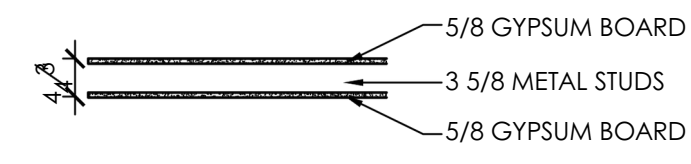
PROJECT NAME & LOCATION

SCALE AS SHOWN	
DRAWN BY NB/DB	PROJECT NO C25-0001
CHECKED BY	A5.2
DATE 02-23-2026	



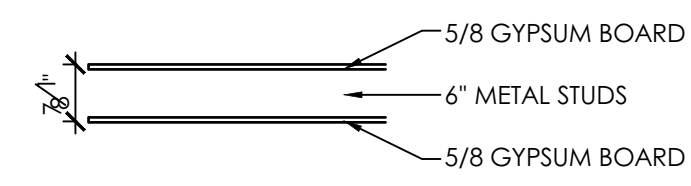
1 TYP. INTERIOR PARTITION
SCALE: 3/4" = 1'-0"

1



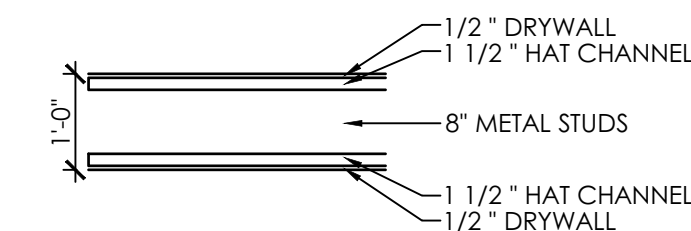
PROVIDE INSULATION PER ENERGY CODE IN WALLS BORDERING ANY NON-A/C SPACES.

2

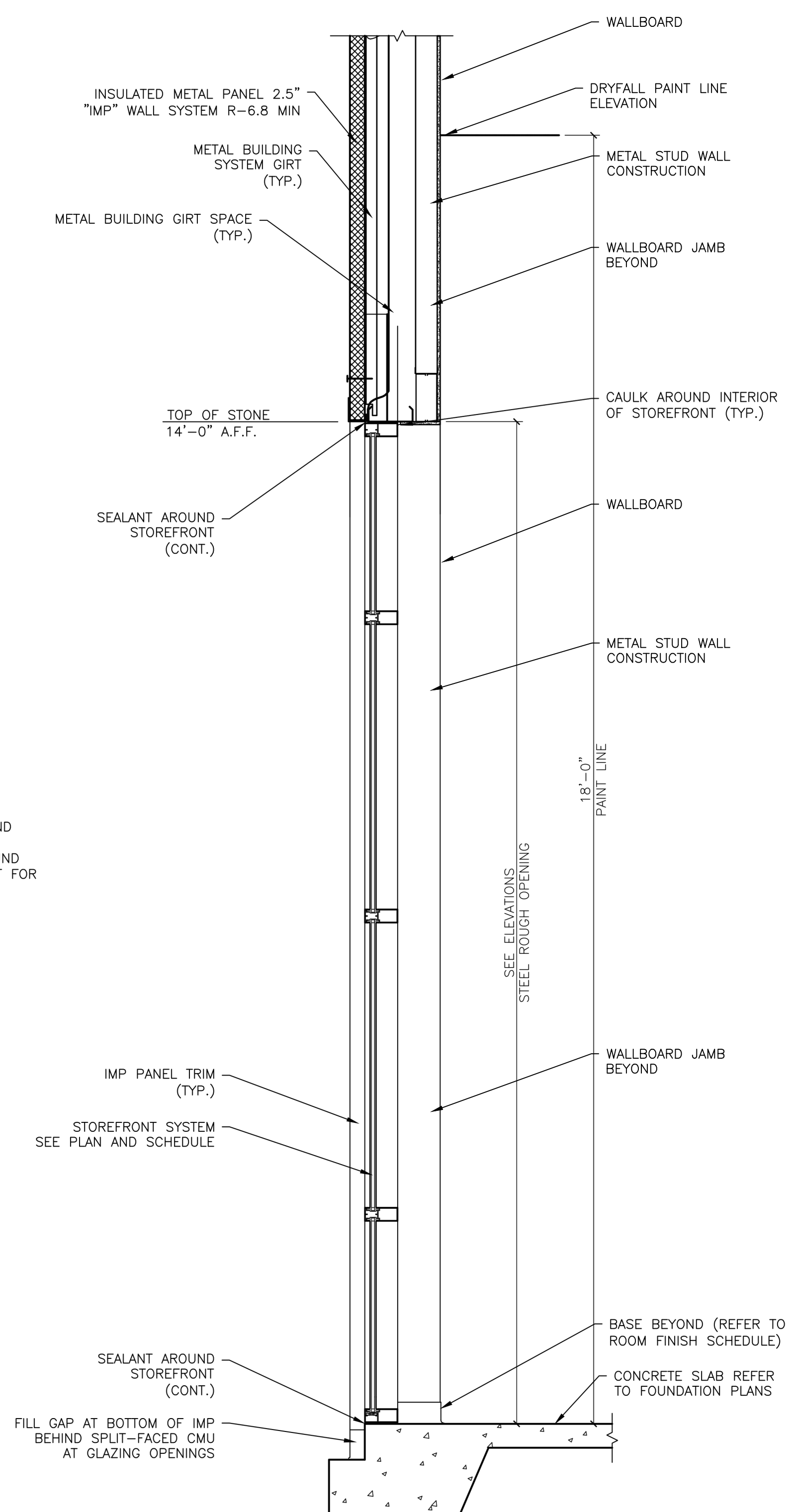


PROVIDE INSULATION PER ENERGY CODE IN WALLS BORDERING ANY NON-A/C SPACES.

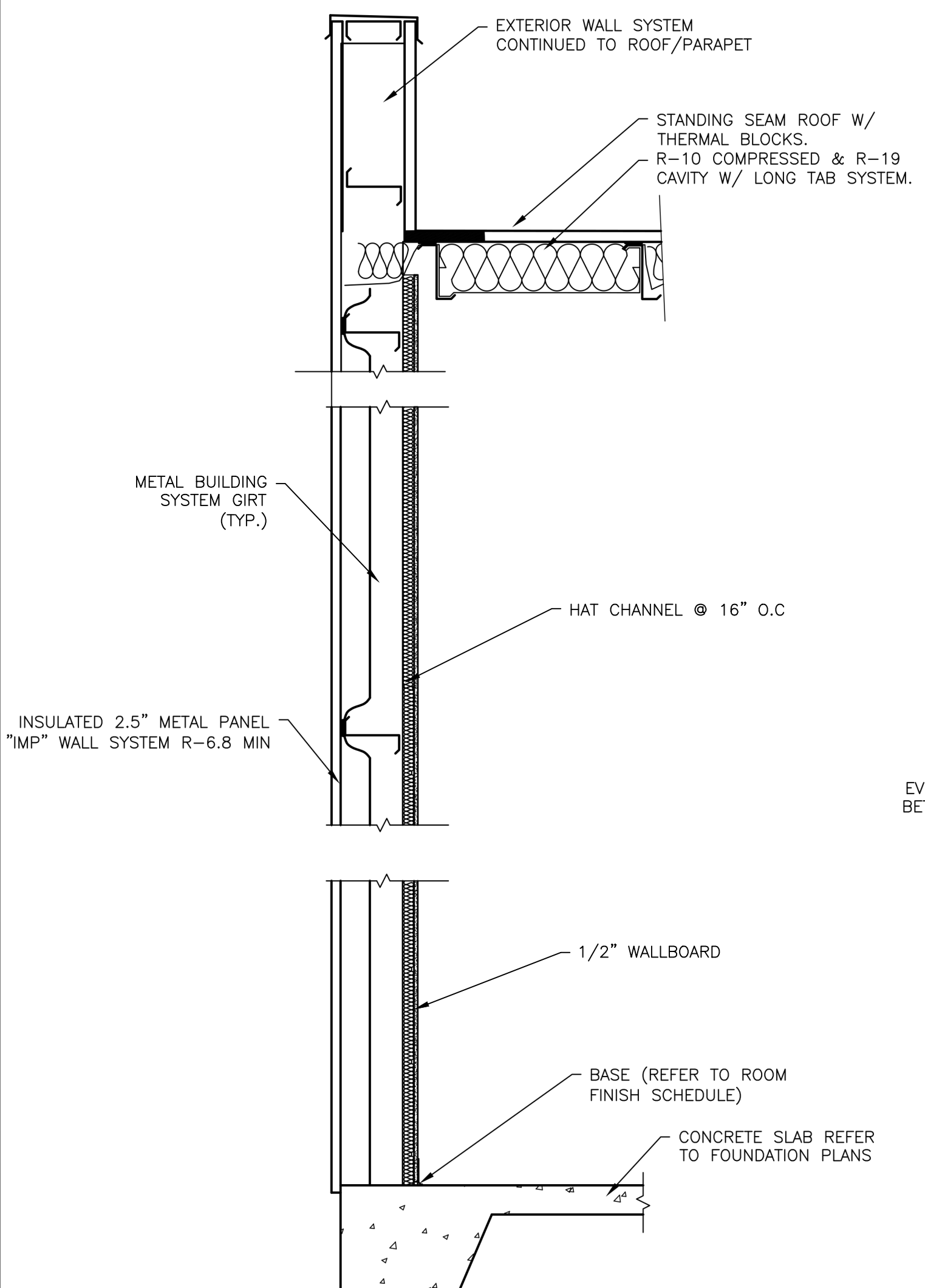
3



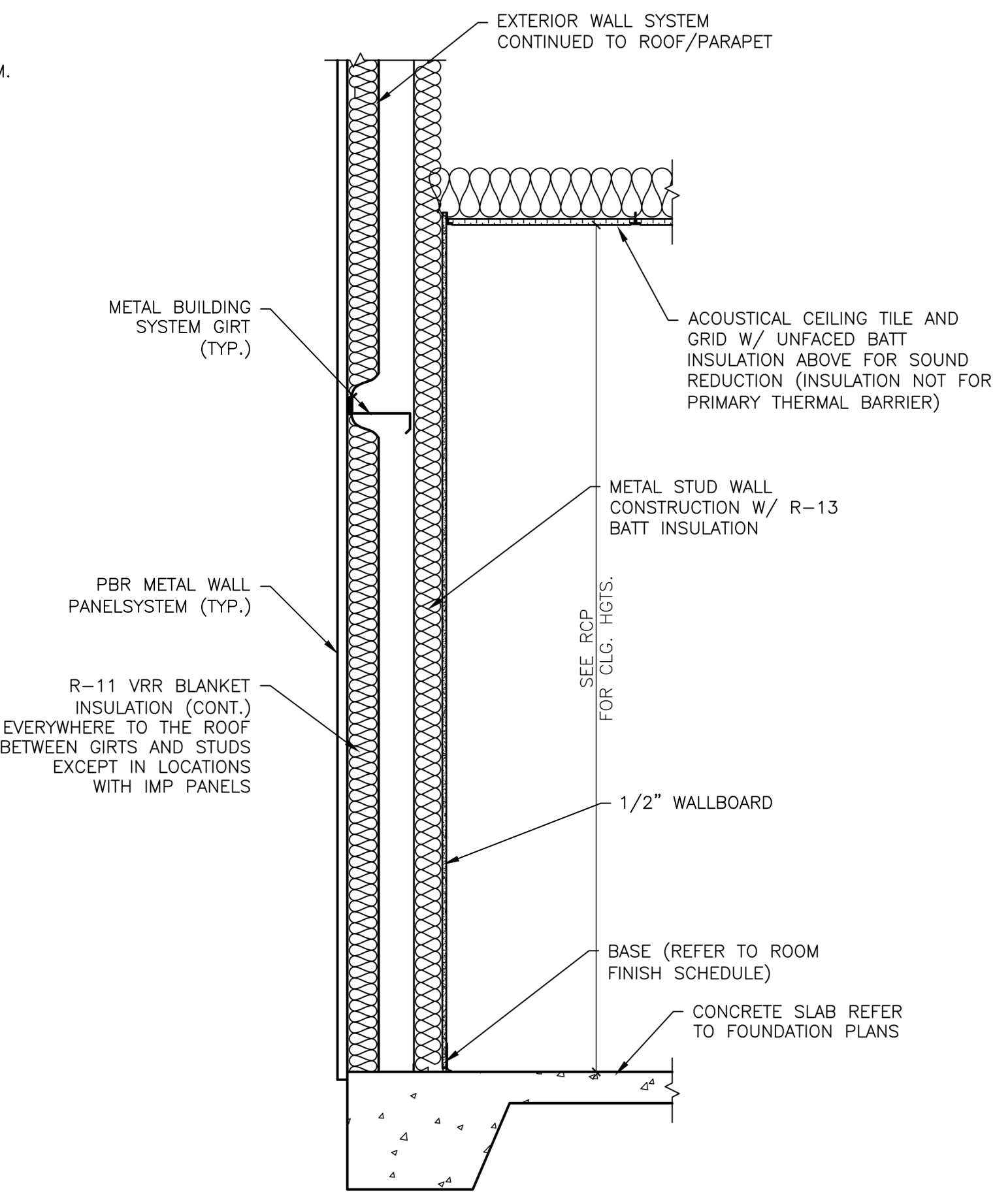
PROVIDE INSULATION PER ENERGY CODE IN WALLS BORDERING ANY NON-A/C SPACES.



6 SECTION AT STOREFRONT
SCALE: 3/4" = 1'-0"

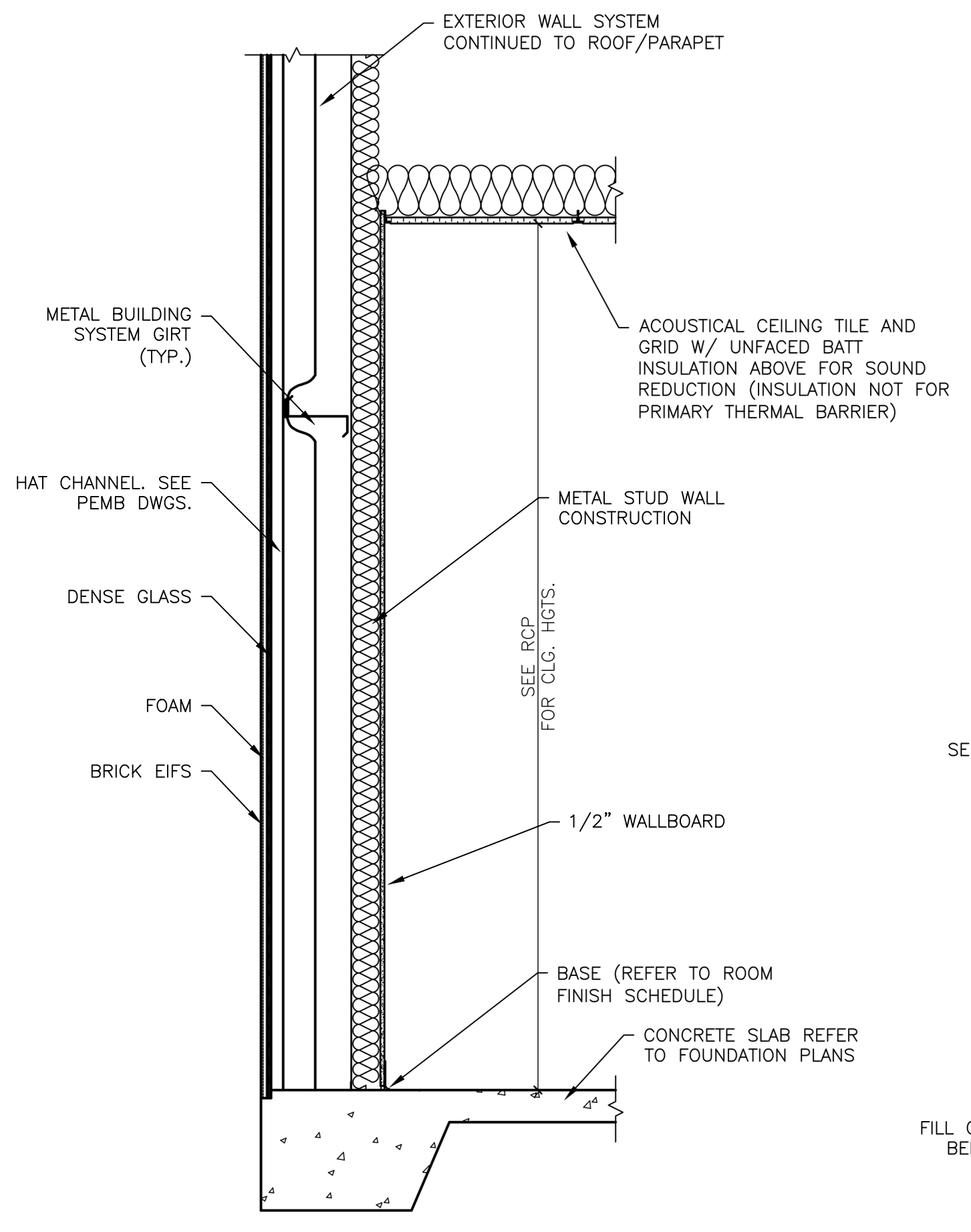


2 EXT. WALL SECTION - IMP
SCALE: 3/4" = 1'-0"



3 EXT. WALL SECTION - PBR
SCALE: 3/4" = 1'-0"

4 EXT. WALL SECTION - PBR SIMILAR AT WAREHOUSE
SCALE: 3/4" = 1'-0"



5 EXT. WALL SECTION - IMPs
SCALE: 3/4" = 1'-0"

FOR CONSTRUCTION

REVISION	DATE	DESCRIPTION
1	02-23-2026	OWNER REVISIONS

SHEET TITLE
WALL TYPES & DETAILS
PROJECT NAME & LOCATION

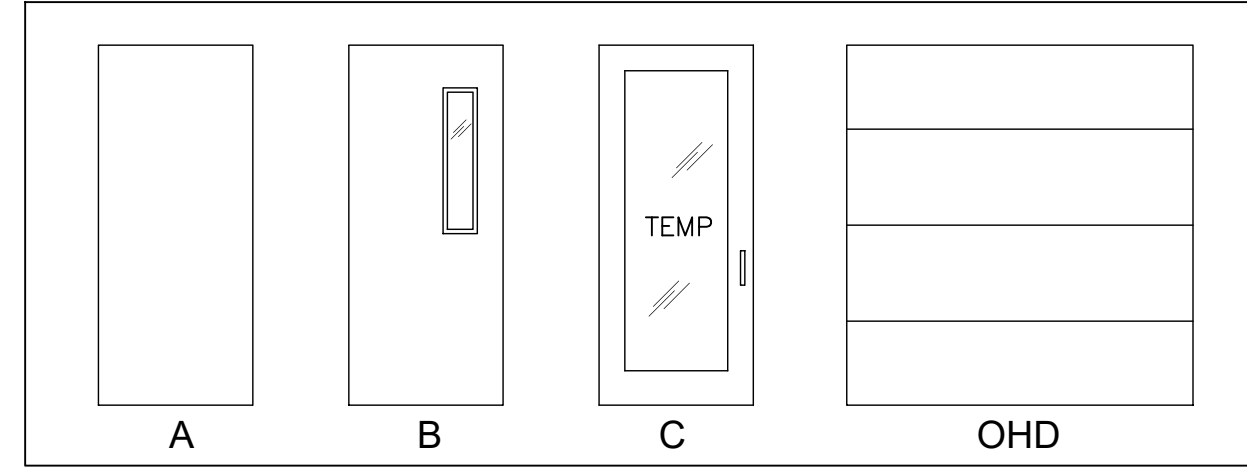
SCALE AS SHOWN	
DRAWN BY NB/DB	PROJECT NO C25-0001
CHECKED BY	A6 SHEET
DATE 02-23-2026	

DOOR SCHEDULE

ROOM NAME	No.	MATL	WIDTH	HGT.	THK.	TYPE	FRAME MATL	WALL THK.	HARDWARE SET	
ENTRY	D101	STOREFRONT	PR 3'-0"	10'-0"	-	C	ALUM.	-	-	PART OF STOREFRONT SYSTEM W3
LOBBY	D102	METAL	3'-0"	7'-0"	1 3/4"	A	METAL	-	-	BY METAL BUILDING MANUFACTURER
PANTRY	D103	METAL	3'-0"	7'-0"	1 3/4"	A	METAL	-	-	BY METAL BUILDING MANUFACTURER
OFFICE 113	D104	S.C. WOOD	3'-0"	7'-0"	1 3/4"	B	H.M.	4-7/8"	1	
OFFICE 114	D105	S.C. WOOD	3'-0"	7'-0"	1 3/4"	B	H.M.	4-7/8"	1	
OFFICE 115	D106	S.C. WOOD	3'-0"	7'-0"	1 3/4"	B	H.M.	4-7/8"	1	
OFFICE 116	D107	S.C. WOOD	3'-0"	7'-0"	1 3/4"	B	H.M.	4-7/8"	1	
OFFICE 117	D108	S.C. WOOD	3'-0"	7'-0"	1 3/4"	B	H.M.	4-7/8"	1	
OFFICE 118	D109	S.C. WOOD	3'-0"	7'-0"	1 3/4"	B	H.M.	4-7/8"	1	
OFFICE 119	D110	S.C. WOOD	3'-0"	7'-0"	1 3/4"	B	H.M.	4-7/8"	1	
OFFICE 120	D111	S.C. WOOD	3'-0"	7'-0"	1 3/4"	B	METAL	4-7/8"	1	
CORRIDOR	D112	METAL	3'-0"	7'-0"	1 3/4"	A	GLASS	-	-	BY METAL BUILDING MANUFACTURER
CONFERENCE	D113	GLASS	PR 3'-0"	7'-0"	-	A	H.M.	-	-	GLASS DOOR AS PART OF GLASS CONFERENCE ROOM WALL SYSTEM
OFFICE 122	D114	S.C. WOOD	3'-0"	7'-0"	1 3/4"	A	H.M.	7-1/4"	1	
CORRIDOR	D115	METAL	3'-0"	7'-0"	1 3/4"	A	H.M.	-	-	BY METAL BUILDING MANUFACTURER
OFFICE 155	D116	H.M.	3'-0"	7'-0"	1 3/4"	B	H.M.	4-7/8"	2	6" VISION LITE WIRED
OFFICE 154	D117	H.M.	3'-0"	7'-0"	1 3/4"	B	H.M.	4-7/8"	2	6" VISION LITE WIRED
OFFICE 124	D118	S.C. WOOD	3'-0"	7'-0"	1 3/4"	B	H.M.	4-7/8"	1	
OFFICE 125	D119	S.C. WOOD	3'-0"	7'-0"	1 3/4"	B	H.M.	4-7/8"	1	
OFFICE 126	D120	S.C. WOOD	3'-0"	7'-0"	1 3/4"	B	H.M.	4-7/8"	1	
OFFICE 128	D121	S.C. WOOD	3'-0"	7'-0"	1 3/4"	B	H.M.	4-7/8"	1	
OFFICE 122	D122	S.C. WOOD	3'-0"	7'-0"	1 3/4"	B	H.M.	4-7/8"	1	
OFFICE 129	D123	S.C. WOOD	3'-0"	7'-0"	1 3/4"	B	H.M.	4-7/8"	1	
PHONE ROOM	D124	S.C. WOOD	3'-0"	7'-0"	1 3/4"	B	GLASS	-	-	
CORRIDOR	D125	GLASS	PR 3'-0"	7'-0"	-	A	H.M.	-	-	GLASS DOOR AS PART OF GLASS WALL SYSTEM
MEN'S R.R.	D126	S.C. WOOD	3'-0"	7'-0"	1 3/4"	A	H.M.	4-7/8"	3	
WOMEN'S R.R.	D127	S.C. WOOD	3'-0"	7'-0"	1 3/4"	A	H.M.	4-7/8"	3	
IT CLOSET	D128	S.C. WOOD	3'-0"	7'-0"	1 3/4"	A	-	-	-	POCKET DOOR W/ OVERHEAD TRACK SYSTEM
NOT USED										
UNISEX R.R.	D130	S.C. WOOD	3'-0"	7'-0"	1 3/4"	A	H.M.	4-7/8"	5	
FITNESS	D131	METAL	3'-0"	7'-0"	1 3/4"	A	H.M.	-	6	
FITNESS CLOSET	D132	S.C. WOOD	3'-0"	7'-0"	1 3/4"	A	H.M.	4-7/8"	10	
PHONE ROOM	D133	S.C. WOOD	3'-0"	7'-0"	1 3/4"	A	H.M.	4-7/8"	9	
COFFEE STORAGE	D134	S.C. WOOD	3'-0"	7'-0"	1 3/4"	A	H.M.	4-7/8"	9	
CORRIDOR	D135	S.C. WOOD	3'-0"	7'-0"	1 3/4"	A	H.M.	4-7/8"	7	
CORRIDOR	D136	S.C. WOOD	3'-0"	7'-0"	1 3/4"	A	H.M.	4-7/8"	8	
PHONE ROOM	D137	S.C. WOOD	3'-0"	7'-0"	1 3/4"	A	H.M.	4-7/8"	9	
CLOSET	D138	S.C. WOOD	3'-0"	7'-0"	1 3/4"	A	H.M.	4-7/8"	4	
RECEPTION	D139	GLASS	PR 3'-0"	7'-0"	-	A	GLASS	-	-	GLASS DOOR AS PART OF GLASS WALL SYSTEM
CLOSET	D140	S.C. WOOD	3'-0"	7'-0"	1 3/4"	A	H.M.	4-7/8"	10	
CHEF'S OFFICE	D141	S.C. WOOD	3'-0"	7'-0"	1 3/4"	B	H.M.	4-7/8"	1	
VESTIBULE	D142	METAL	PR 3'-0"	7'-0"	-	A	H.M.	-	12	
LAUNDRY CLOSET	D143	H.M.	PR 3'-0"	7'-0"	1 3/4"	A	H.M.	4-7/8"	11	
BAR	D144	STOREFRONT	PR 3'-0"	9'-0"	-	C	ALUM.	-	-	PART OF STOREFRONT SYSTEM W7
NOT USED										
DISH DISPLAY	D146	S.C. WOOD	PR 3'-0"	7'-0"	1 3/4"	A	H.M.	4-7/8"	13	
NOT USED										
DISH DISPLAY	D148	S.C. WOOD	3'-0"	7'-0"	1 3/4"	A	H.M.	4-7/8"	14	
ELEC. ROOM	D149	H.M.	3'-0"	7'-0"	1 3/4"	A	H.M.	7-1/4"	15	FIRE RATED
ICE/BAR STORAGE	D150	METAL	3'-0"	7'-0"	1 3/4"	A	METAL	-	-	BY METAL BUILDING MANUFACTURER
RISER ROOM	D151	METAL	3'-0"	7'-0"	1 3/4"	A	METAL	-	-	BY METAL BUILDING MANUFACTURER, FIRE RATED
OPEN VENUE SPACED	D152	STOREFRONT	PR 3'-0"	8'-11"	-	C	ALUM.	-	-	PART OF STOREFRONT SYSTEM W1
WAREHOUSE	D153	METAL	3'-0"	7'-0"	1 3/4"	A	METAL	11-11/4"	-	BY METAL BUILDING MANUFACTURER
WAREHOUSE	D154	SECTIONAL	9'-0"	7'-0"	-	OHD	METAL	11-11/4"	-	MANUALLY OPERATED, NON-INSULATED, 2" TRACK
WAREHOUSE	D155	SECTIONAL	9'-0"	7'-0"	-	OHD	METAL	11-11/4"	-	MANUALLY OPERATED, NON-INSULATED, 2" TRACK
WAREHOUSE	D156	SECTIONAL	9'-0"	7'-0"	-	OHD	METAL	11-11/4"	-	MANUALLY OPERATED, NON-INSULATED, 2" TRACK
WAREHOUSE	D157	SECTIONAL	12'-0"	7'-0"	-	OHD	METAL	11-11/4"	-	MANUALLY OPERATED, NON-INSULATED, 2" TRACK
WAREHOUSE	D158	METAL	3'-0"	7'-0"	1 3/4"	A	METAL	-	-	BY METAL BUILDING MANUFACTURER
WAREHOUSE	D159	METAL	3'-0"	7'-0"	1 3/4"	A	METAL	-	-	BY METAL BUILDING MANUFACTURER
WATER HEATER CLOSET	D160	METAL	3'-0"	7'-0"	1 3/4"	A	METAL	-	-	
ENTRY LOUNGE	D201	GLASS	PR 3'-0"	7'-0"	-	A	-	-	-	
EXECUTIVE CONF.	D202	GLASS	PR 3'-0"	7'-0"	-	A	-	-	-	
COFFEE	D203	METAL	3'-0"	7'-0"	1 3/4"	A	METAL	-	-	BY METAL BUILDING MANUFACTURER
RESTROOM	D204	S.C. WOOD	3'-0"	7'-0"	1 3/4"	A	H.M.	4-7/8"	17	POCKET DOOR
CLOSET	D205	S.C. WOOD	PR 2'-0"	7'-0"	1 3/4"	A	H.M.	4-7/8"	16	
EXECUTIVE OFFICE	D206	S.C. WOOD	3'-0"	7'-0"	1 3/4"	A	H.M.	4-7/8"	1	
EXECUTIVE OFFICE	D207	S.C. WOOD	3'-0"	7'-0"	1 3/4"	A	H.M.	4-7/8"	1	
CLOSET	D208	S.C. WOOD	PR 2'-0"	7'-0"	1 3/4"	A	H.M.	4-7/8"	16	

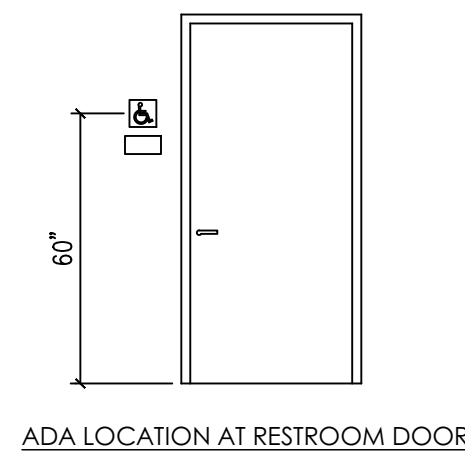
- NOTES:
- ALL DOORS IN MEANS OF EGRESS TO BE OPENABLE FROM INSIDE AT ALL TIMES WITHOUT USE OF A KEY OR SPECIAL TOOL OR KNOWLEDGE.
 - ALL LEVERS AND PULLS TO BE HANDICAP ACCESSIBLE.
 - ALL CLOSERS PULL FORCE TO BE IN ACCORDANCE WITH THE ADA.
 - ALL FIRE RATED OPENINGS ARE TO BE ASSEMBLIES TESTED IN ACCORDANCE WITH NFPA 80 FOR POSITIVE PRESSURE.
 - PROVIDE WALL BUMPER TYPE STOPS WITH EVERY DOOR SWINGING AGAINST A WALL.
 - SPECIFIED ITEMS ARE BASIS OF FUNCTION AND GRADE. FURNISH SPECIFIED OR EQUAL.
 - REFER TO FLOOR PLAN FOR HAND OF DOOR & LOCATION.
 - "S.C. WOOD" - SOLID CORE DOOR STAINED & SEALED.
 - "METAL" - METAL DOOR.
 - "H.M." - HOLLOW METAL DOOR OR FRAME.
 - "OHD" - OVERHEAD DOOR.
 - PAINT METAL DOORS AND FRAMES.

DOOR TYPES:



HARDWARE SCHEDULE

<p>HARDWARE SET NO. 1 3 ea. BB81 4.5" x 4.5" hinges 1 ea. 2550 WTN SFIC office lockset 1 ea. Construction core 1 ea. 236W wall stop</p>	<p>HARDWARE SET NO. 9 3 ea. BB81 4.5" x 4.5" hinges 1 ea. 2510 WTN passage set 1 ea. 6000 series overhead stop</p>
<p>HARDWARE SET NO. 2 3 ea. BB81 4.5" x 4.5" hinges 1 ea. 2550 WTN SFIC office lockset 1 ea. Construction core 1 ea. 236W wall stop 1 ea. 413S 36" threshold 1 ea. 726S 17" gasketing</p>	<p>HARDWARE SET NO. 10 3 ea. BB81 4.5" x 4.5" hinges 1 ea. 2510 WTN passage set 1 ea. 230W wall stop</p>
<p>HARDWARE SET NO. 3 3 ea. BB81 4.5" x 4.5" hinges 1 ea. 30S 6" x 16" push plate 1 ea. 33G 4" x 16" pull plate 1 ea. 5200 closer 1 ea. 230W wall stop 1 ea. 190S 8" x 34" kick-plate</p>	<p>HARDWARE SET NO. 11 6 ea. BB81 4.5" x 4.5" hinges 1 ea. 2510 WTN passage set 2 ea. 282D flush-bolts 2 ea. 242F floor stop</p>
<p>HARDWARE SET NO. 4 3 ea. BB81 4.5" x 4.5" hinges 1 ea. 2580 WTN SFIC storeroom lockset 1 ea. Construction core 1 ea. 236W wall stop</p>	<p>HARDWARE SET NO. 12 6 ea. BB81 4.5" x 4.5" hinges 2 ea. 30S 6" x 16" push plates 2 ea. 33G 4" x 16" pull plates 2 ea. 5200 HDHOS closers 2 ea. 190S 34" x 34" armor plates 2 ea. 802S 84" brush meeting stile gasket 1 ea. 8915V 72x84 weather-stripping 1 ea. 413S 72" threshold 2 ea. 802S 36" sweeps</p>
<p>HARDWARE SET NO. 5 3 ea. BB81 4.5" x 4.5" hinges 1 ea. 2540 WTN privacy lockset 1 ea. 5200 closer 1 ea. 236W wall stop</p>	<p>HARDWARE SET NO. 13 6 ea. BB81 4.5" x 4.5" hinges 2 ea. 30S 6" x 16" push plates 2 ea. 33G 4" x 16" pull plates 2 ea. 5200 HDHOS closers 2 ea. 190S 34" x 34" armor plates 2 ea. 802S 84" brush meeting stile gasket</p>
<p>HARDWARE SET NO. 6 3 ea. BB81 4.5" x 4.5" hinges 1 ea. 2570 WTN SFIC classroom lockset 1 ea. Construction core 1 ea. 5200 HDOS closer 1 ea. 190S 8" x 34" kick-plate 1 ea. 8915V 36x84 weather-stripping 1 ea. 413S 36" threshold 1 ea. 802S 36" sweep</p>	<p>HARDWARE SET NO. 14 3 ea. BB81 4.5" x 4.5" hinges 1 ea. 2510 WTN passage set 1 ea. 5200 closer 1 ea. 190S 8" x 34" kick-plate 1 ea. 230W wall stop</p>
<p>HARDWARE SET NO. 7 3 ea. BB81 4.5" x 4.5" hinges 1 ea. 2570 WTN SFIC classroom lockset 1 ea. Construction core 1 ea. 236W wall stop 1 ea. 190S 8" x 34" kick-plate</p>	<p>HARDWARE SET NO. 15 3 ea. BB81 4.5" x 4.5" hinges 1 ea. 4501 RIM 36" exit device 1 ea. 47NL WTN exit trim 1 ea. 3902 SFIC mortise cylinder 1 ea. Construction core 1 ea. 5200 closer 1 ea. 190S 8" x 34" kick-plate 1 ea. 230W wall stop</p>
<p>HARDWARE SET NO. 8 3 ea. BB81 4.5" x 4.5" hinges 1 ea. 4501 RIM 36" exit device 1 ea. 45CE WTN exit trim 1 ea. 3902 SFIC mortise cylinder 1 ea. Construction core 1 ea. 5200 closer 1 ea. 190S 8" x 34" kick-plate 1 ea. 230W wall stop</p>	<p>HARDWARE SET NO. 16 6 ea. BB81 4.5" x 4.5" hinges 2 ea. 15S flush pulls 2 ea. 318D roller latches</p>
	<p>HARDWARE SET NO. 17 3 ea. BB81 4.5" x 4.5" hinges 1 ea. 2540 WTN privacy lock 1 ea. 236W wall stop</p>



NOTE:
ALL SIGNAGE SHALL CONFORM WITH ADA ACCESSIBILITY GUIDELINES, INCLUDING BUT NOT LIMITED TO PROPORTION, COLOR, CONTRAST, RELIEF AND GRADE 2 BRAILLE REQUIREMENTS.

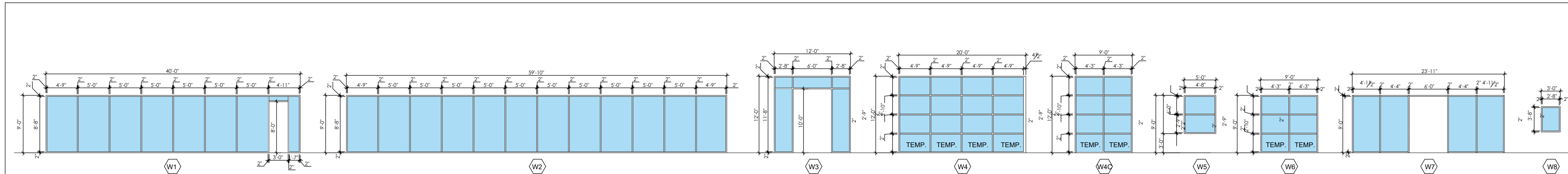
GLAZING SCHEDULE

No.	MATL	WIDTH	HGT.	GLASS	REMARKS:
W1	STOREFRONT	40'-0"	12'-0"	1" INSULATED, TINTED, TEMP	ENTRY STOREFRONT SYSTEM FOR DOOR D152
W2	STOREFRONT	59'-10"	12'-0"	1" INSULATED, TINTED, TEMP	
W3	STOREFRONT	12'-0"	12'-0"	1" INSULATED, TINTED, TEMP	ENTRY STOREFRONT SYSTEM FOR DOOR D101
W4	STOREFRONT	19'-10"	12'-0"	1" INSULATED, TINTED, TEMP	
W4C	STOREFRONT	9'-0"	12'-0"	1" INSULATED, TINTED, TEMP	
W5	STOREFRONT	4'-0"	5'-0"	1" INSULATED, TINTED, TEMP	
W6	STOREFRONT	9'-0"	9'-0"	1" INSULATED, TINTED, TEMP	
W7	STOREFRONT	9'-0"	9'-0"	1" INSULATED, TINTED, TEMP	
W8	STOREFRONT	3'-0"	4'-0"	1" INSULATED, TINTED, TEMP	

SOUTHERN LOW-E INSUL. GLASS, TYP.
MAX. SHGC = .25
MAX. SHGC UNDER OVERHANG = .37
VT/SHGC = 1.10
MAX. GLAZED ENTRY DOOR U = .77
ALL EXTERIOR OPENINGS
MAX. OPAQUE DOOR U=0.70
MAX. FIXED GLASS U= 0.50

- NOTE: 1) REFER TO FLOOR PLAN FOR LOCATION AND QUANTITIES.
2) REFER TO GLAZING ELEVATIONS BELOW FOR LAYOUT.
3) ALL WINDOWS TO BE INSTALLED AS COMPLETE SYSTEM.

GLAZING ELEVATIONS:



FOR CONSTRUCTION

REVISION	DATE	DESCRIPTION
1	02-23-2026	OWNER REVISIONS

SHEET TITLE
SCHEDULES

PROJECT NAME & LOCATION

SCALE
AS SHOWN

DRAWN BY NB/DB	PROJECT NO C25-0001
CHECKED BY AT/HEET	
DATE 02-23-2026	