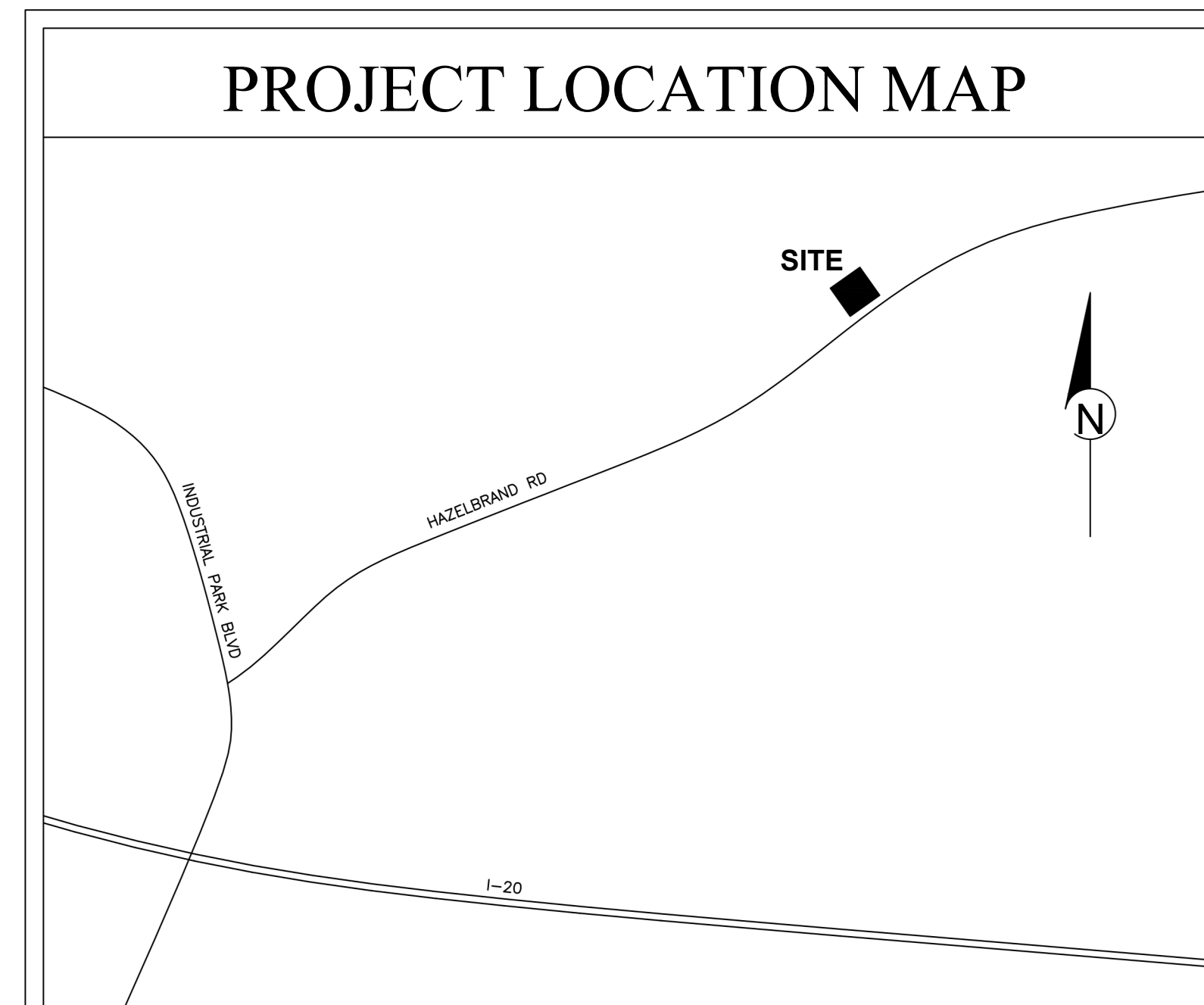


NEW FACILITY FOR [SENSITIVE CONTENT REDACTED]



PROJECT CRITERIA

CURRENT LIST OF CODES:

INTERNATIONAL BUILDING CODE, 2018 EDITION WITH GA AMENDMENTS
 INTERNATIONAL FIRE CODE, 2018 EDITION WITH GA AMENDMENTS
 INTERNATIONAL PLUMBING CODE, 2018 EDITION WITH GA AMENDMENTS
 INTERNATIONAL MECHANICAL CODE, 2018 EDITION WITH GA AMENDMENTS
 INTERNATIONAL FUEL GAS CODE, 2018 EDITION WITH GA AMENDMENTS
 NATIONAL ELECTRICAL CODE, 2017 EDITION
 INTERNATIONAL ENERGY CONSERVATION CODE, 2015 EDITION WITH GA AMENDMENTS
 NFPA 101 LIFE SAFETY CODE, 2018 EDITION
 2010 ADA STANDARDS FOR ACCESSIBLE DESIGN

PROJECT DESCRIPTION:

New 450' x 150' x 36' high (67,450 sf) Metal Building System designed Building facility for metal manufacturing and supporting Office space. The main Office space consists of two levels along with smaller supporting offices within the manufacturing areas. The end bay of building is a covered unloading area open on three sides.

OCCUPANCY CALCULATIONS: (LSC Table 7.3.1.2, IBC Table 1004.5)

Space	Area	Occupancy	Load
Unloading Area:	7,325 sf	SPI (n/a)	0.00 persons
Carbon Shop:	22,300 sf	SPI (n/a)	10.00 persons
Stainless Shop:	22,200 sf	SPI (n/a)	10.00 persons
Machine Shop:	7,359 sf	SPI (n/a)	4.00 persons
Office 1st Floor:	7,025 sf	Business (150)	46.83 persons
Office 2nd Floor:	6,473 sf	Business (150)	43.15 persons
Business total:			89.98 ~ 90 person total
Industrial total:			24.00 ~ 24 person total
Total Occupant Load:			113.98 ~ 114 persons total

BUILDING DESIGN CRITERIA:

Use & Occupancy Classification: LSC 101 Ch.6 (IBC Ch.3)
 Predominant Occupancy: Special Purpose Industrial (F-2)
 Incidental Occupancy: New Business (B)
 LSC Mixed Occupancy (Section 6.1.14.3 & IBC Section 508.3)
 No separation required between occupancies
 Occupant Load (LSC & IBC) (Refer to Occupancy Calculations)
 Total: 114 persons
 Hazard Contents (LSC Section 6.2.2)
 Moderate Hazard, Special Purpose Industrial
 Special Requirements (IBC Ch. 4)
 Section 404 Atriums - Two story space.
 No fire or smoke separations required per 404.5 and 404.6
 Type of Construction (IBC Ch.5 & 6)
 Type IIB, Sprinklered
 IBC Table 601 = No fire-rating requirements for structure
 IBC Table 602 = No fire-rating requirements based on distance
 Building Area (IBC Table 506.2)
 F-2 69,000 sf max
 B 69,000 sf max
 Project Total: 67,450 sf overall area
 Building Stories/Height
 Industrial (4 stories, 75' max)
 Business (4 stories, 75' max)
 Fire sprinkler system
 NFPA 13 Sprinkler
 Egress Capacity
 Refer to sheet A-1.1 for calculations and layout
 Design Loads
 Refer to structural drawings and/or PEMB drawings

SHEET INDEX

SHT. No.	TITLE
CS-1	COVER SHEET
A-1	OVERALL BUILDING LAYOUT
A-1.1	OVERALL LIFE SAFETY PLAN
A-2	EXTERIOR ELEVATIONS & BLDG. SECTIONS
A-3	ENLARGED FIRST FLOOR PLANS
A-4	ENLARGED OFFICE SECOND FLOOR PLAN
A-5	SCHEDULES
A-6	ENLARGED FIRST FLOOR RCP
A-7	ENLARGED OFFICE SECOND FLOOR RCP
A-8	WALL SECTIONS
A-9	CABINET AND RESTROOM FIXTURE ELEVATIONS
A-10	CABINET AND RESTROOM FIXTURE ELEVATIONS
M-101	HVAC OVERALL FLOOR PLAN
M-102	ENLARGED HVAC FLOOR PLAN
M-103	ENLARGED HVAC FLOOR PLAN
M-104	ENLARGED HVAC FLOOR PLANS
M-201	HVAC NOTES & SCHEDULES
M-202	HVAC DETAILS
M-203	HVAC DETAILS
E-100	WAREHOUSE POWER PLAN
E-200	WAREHOUSE LIGHTING PLAN
E-300	OFFICE POWER PLANS
E-301	OFFICE POWER PLANS
E-400	OFFICE LIGHTING PLANS
E-401	OFFICE LIGHTING PLANS
E-500	RISER DIAGRAM, SCHEDULES
E-600	PANEL SCHEDULES
E-601	PANEL SCHEDULES
P-101	PLUMBING OVERALL FLOOR PLANS
P-201	CARBON / STAINLESS SHOP OFFICE FLOOR PLAN
P-202	FIRST & SECOND OFFICE FLOOR PLAN - SANITARY
P-203	FIRST & SECOND OFFICE FLOOR PLAN - WATER
P-301	WATER & SANITARY RISERS
P-302	NATURAL GAS RISER
P-401	PLUMBING SCHEDULE, NOTES, & DETAILS
PEMB	PRE-ENGINEERED METAL BUILDING PLANS
	FIRE SPRINKLER DRAWINGS TO BE SUBMITTED BY AWARDED CONTRACTOR
	FIRE ALARM DRAWINGS TO BE SUBMITTED BY AWARDED CONTRACTOR

CONTACT LIST

CONTRACTOR: (24 HR. CONTACT)

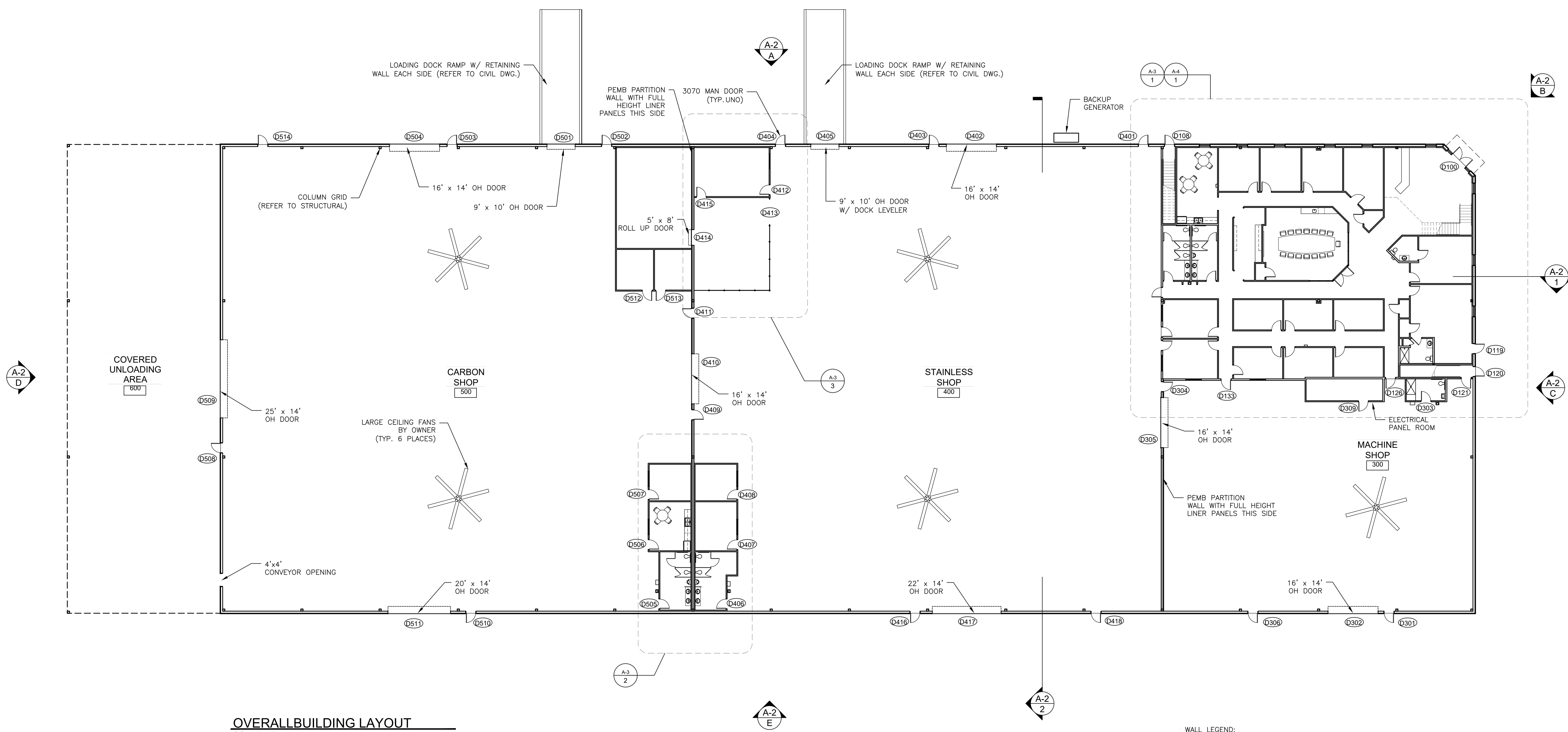
OWNER:

CIVIL:

STRUCTURAL:

ELECTRICAL:

MECHANICAL:

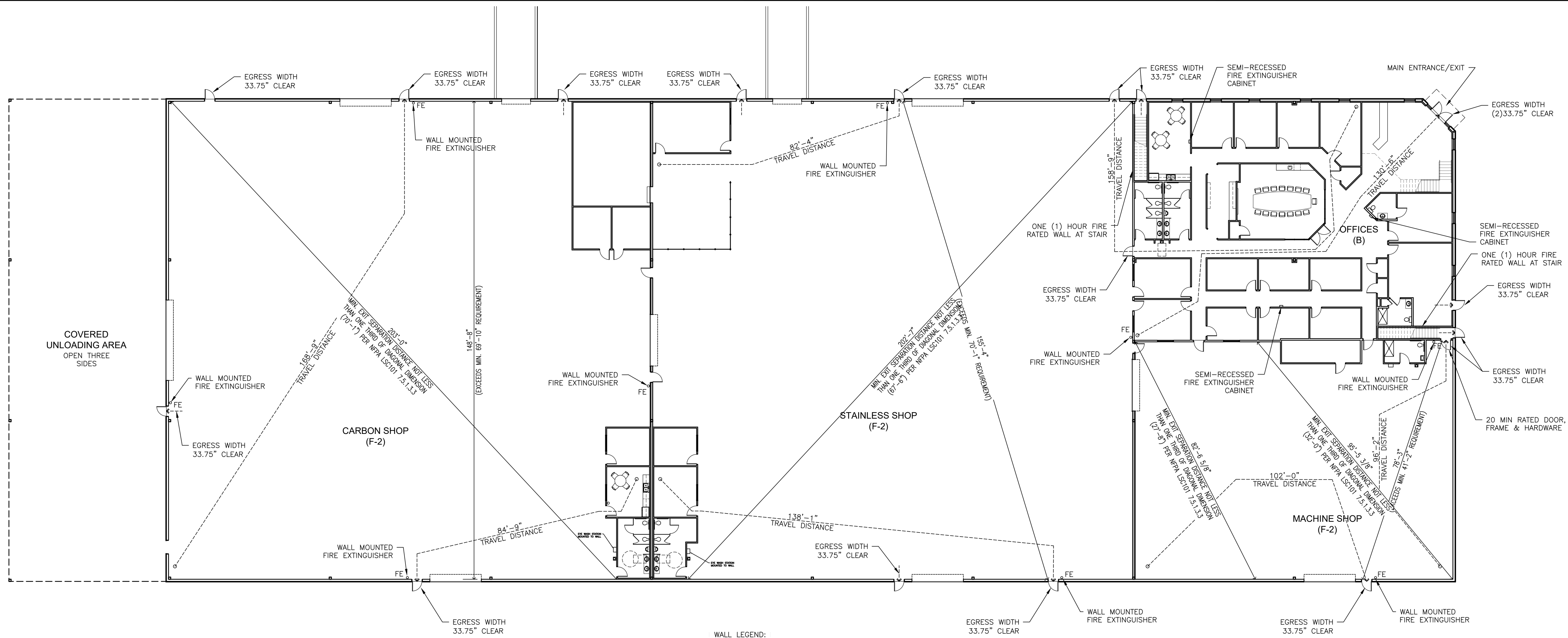


OVERALL BUILDING LAYOUT
SCALE: 1/16" = 1'-0"

NOTES:
1) REFER TO ENLARGED PLANS FOR ADDITIONAL DOOR TAGS AND WINDOW TAGS.
2) REFER TO SHEET A-5 FOR SCHEDULES.

WALL LEGEND:

	STUD WITH 1/2" WALLBOARD BOTH SIDES (4" THICK U.N.G.) FILL CAVITY WITH R-11 MIN.
	PARTITION
	1 HR RATED WALL



OVERALL FIRST LEVEL LIFE SAFETY PLAN

SCALE: 1/16" = 1'-0"

NOTES:
 1) APPROVED 10 LB. TYPE ABC FIRE EXTINGUISHERS "FE" SHALL BE LOCATED WITHIN A MAXIMUM OF 75' TRAVEL DISTANCE THROUGHOUT BUILDING

WALL LEGEND:

- STUD WITH 1/2" WALLBOARD BOTH SIDES (4" THICK U.N.O.) FILL CAVITY WITH R-11 MIN.
- PARTITION
- 1 HR RATED WALL

EGRESS CAPACITY PER SPACE:

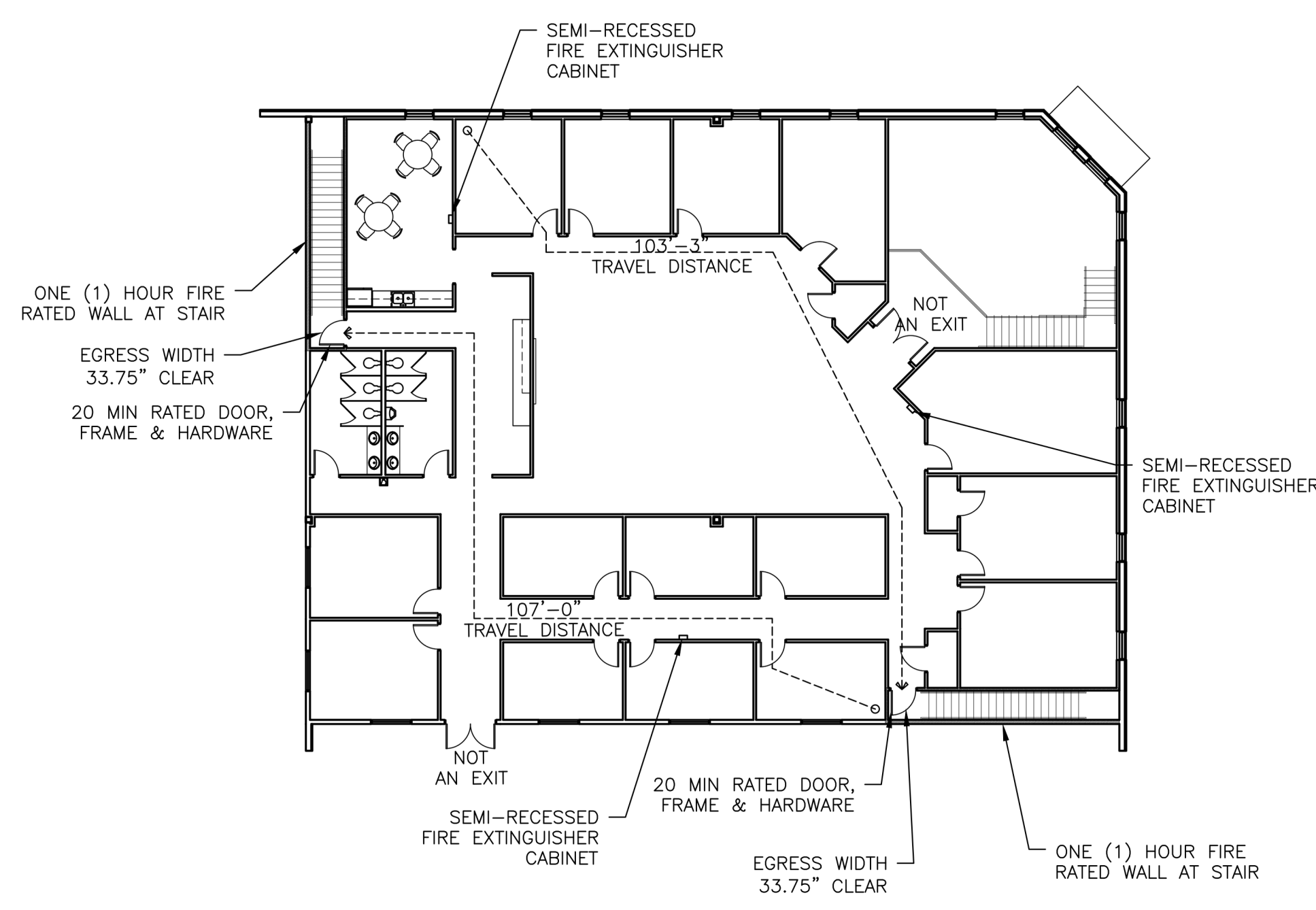
CARBON SHOP:	10 Persons x 0.2" = 2.0" required width
STAINLESS SHOP:	10 Persons x 0.2" = 2.0" required width
MACHINE SHOP:	4 Persons x 0.2" = 0.8" required width
OFFICE (1st FLR):	47 Persons x 0.2" = 9.4" required width
OFFICE (2nd FLR):	44 Persons x 0.2" = 8.8" required width
	44 Persons x 0.3" = 13.2" required at stair

EXITS:

2 Required	2 Exits Provided with 33.75" Clear each
2 Required	2 Exits Provided with 33.75" Clear each
2 Required	2 Exits Provided with 33.75" Clear each
2 Required	2 Exits Provided with 33.75" Clear each
2 Required	2 Exits Provided with 33.75" Clear each (2 stair exits provided)

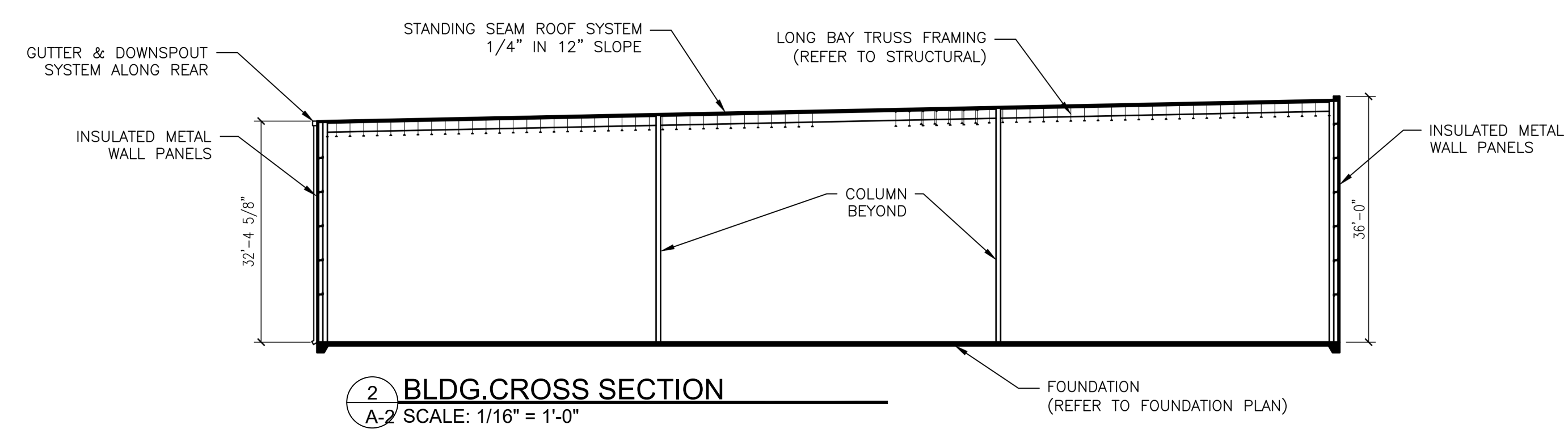
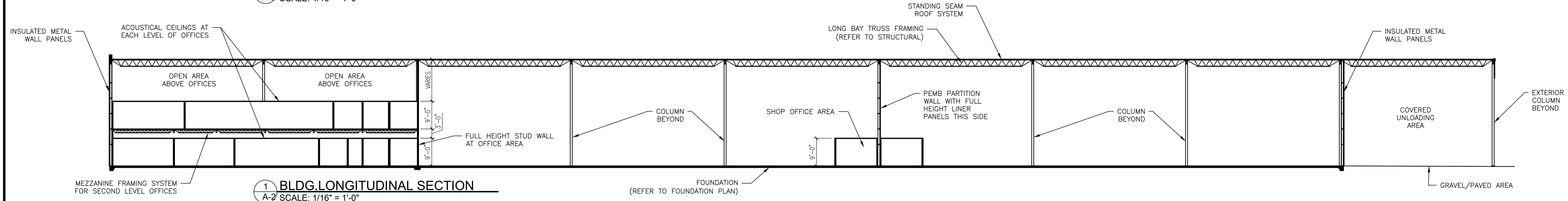
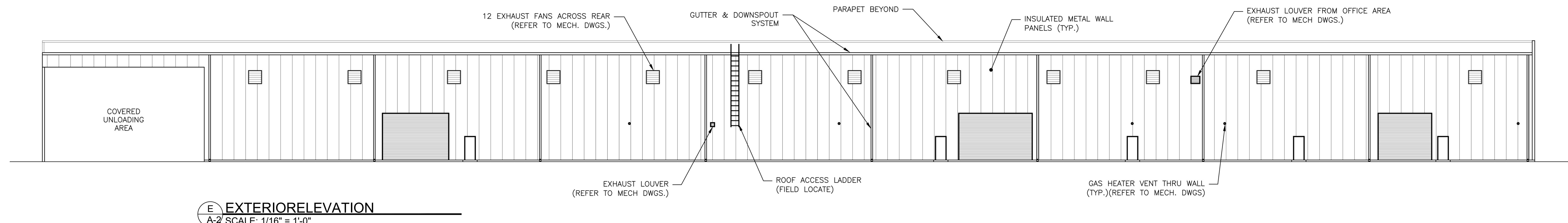
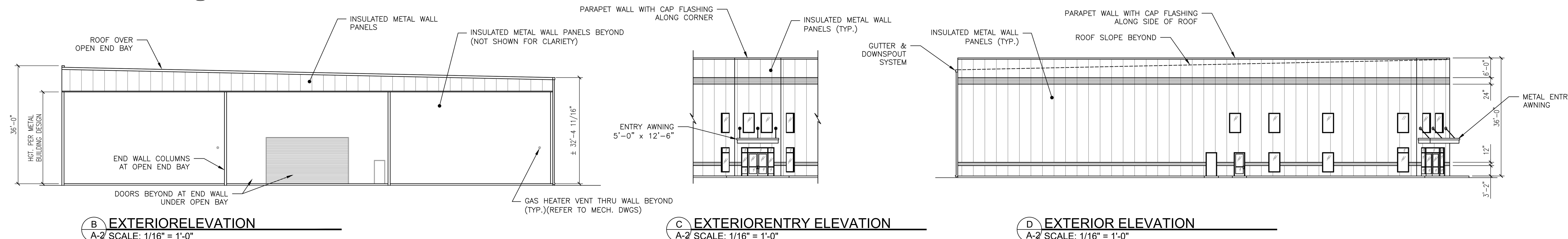
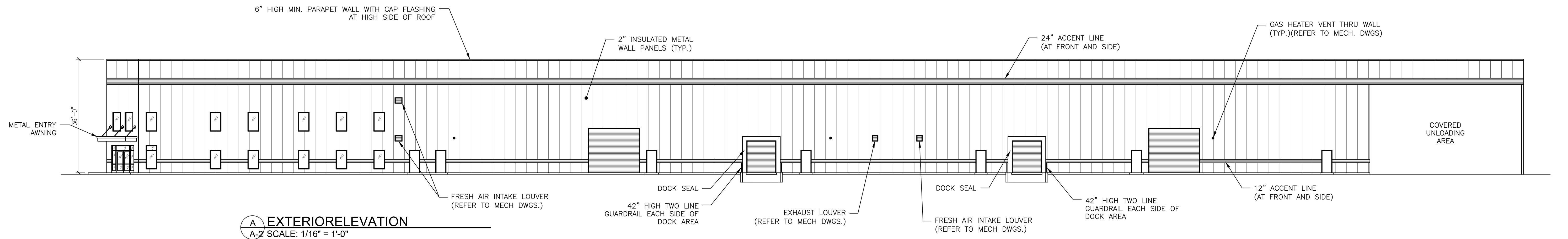
NFPA LSC 101 CHAPTER 38 & 40 REQUIREMENTS:

Dead-end corridor limits:	
Special Purpose Industrial Business	50' max with NFPA 13 sprinkler
Special Purpose Industrial Business	50' max with NFPA 13 sprinkler
Common Path of Travel:	
Special Purpose Industrial Business	100' max with NFPA 13 sprinkler
Special Purpose Industrial Business	100' max with NFPA 13 sprinkler
Travel distance to exits:	
Special Purpose Industrial Business	400' max with NFPA 13 sprinkler
Special Purpose Industrial Business	300' max with NFPA 13 sprinkler

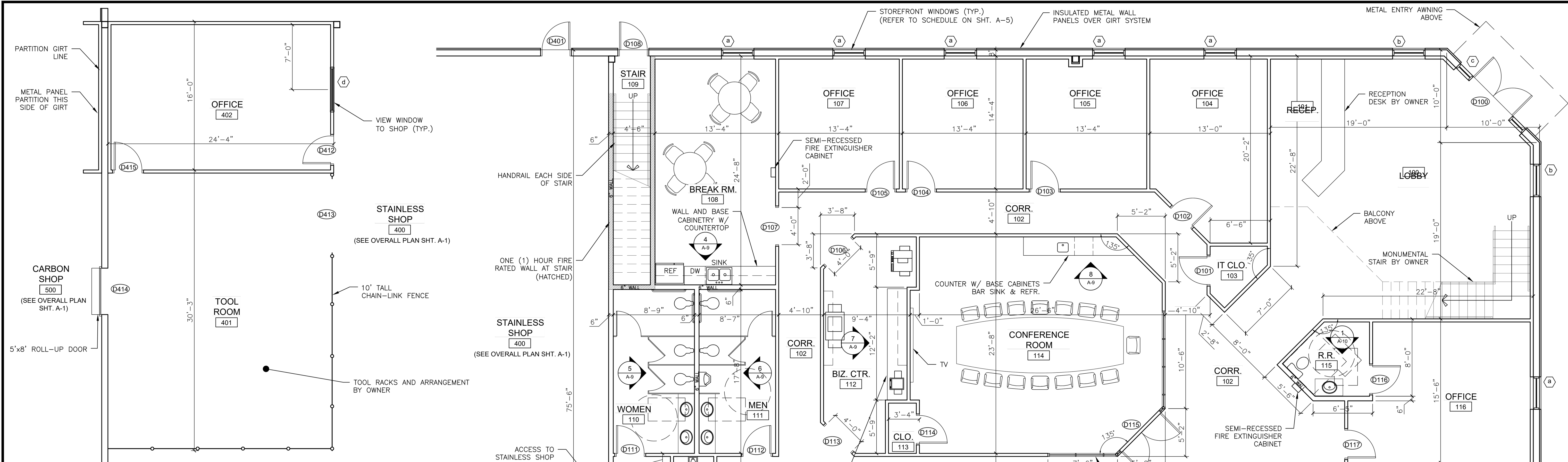


SECOND LEVEL OFFICE LIFE SAFETY PLAN

SCALE: 1/16" = 1'-0"

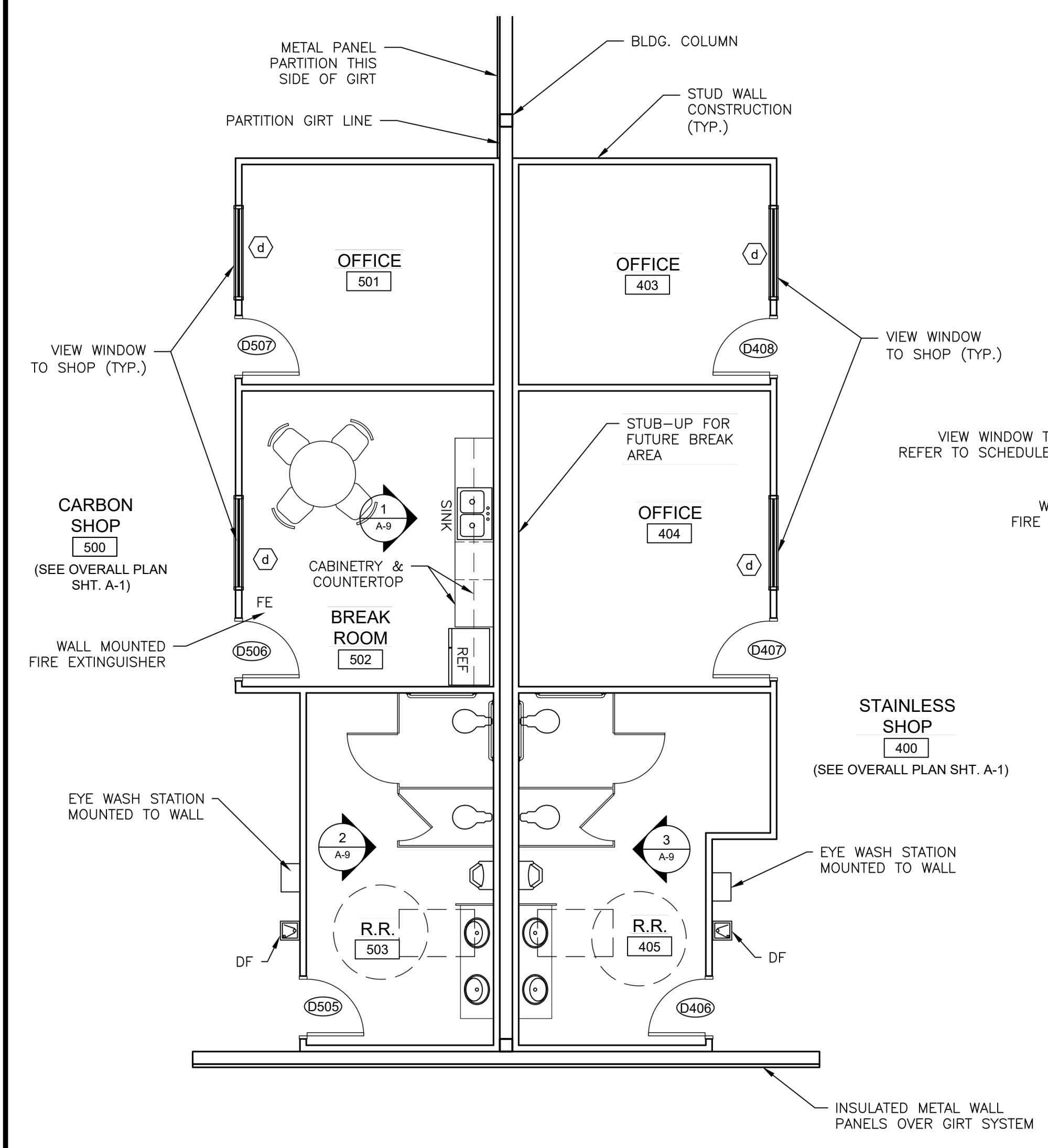


NOTES:
1) REFER TO PLANS AND SCHEDULES FOR DOOR AND WINDOW TAG AND INFORMATION.
2) INSULATION NOT SHOWN IN OVERALL SECTIONS FOR CLARITY. REFER TO WALL SECTIONS AND DETAILS.



1 ENLARGED OFFICE FIRST FLOOR PLAN
SCALE: 3/16" = 1'-0"

3 ENLARGED TOOL ROOM AREA FLOOR PLAN
SCALE: 3/16" = 1'-0"



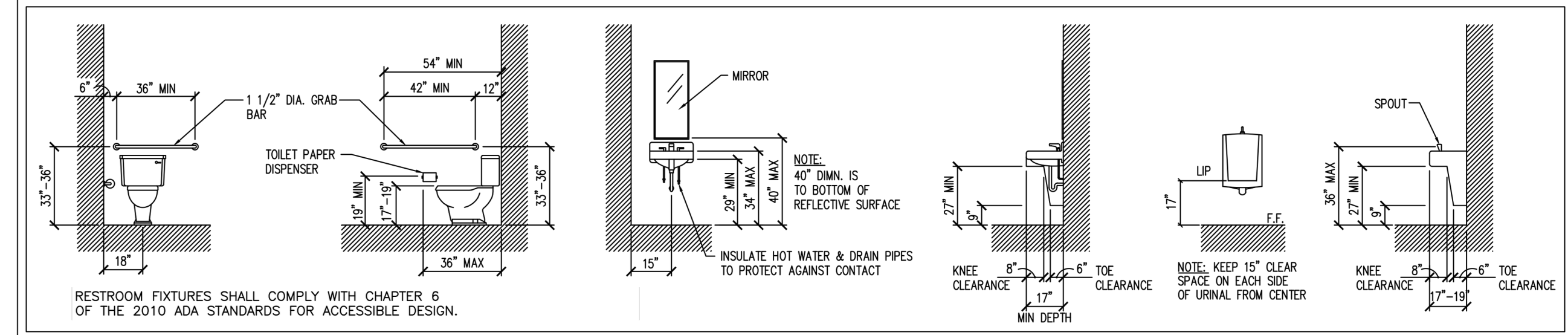
2 ENLARGED SHOP OFFICE AREA FLOOR PLAN
SCALE: 3/16" = 1'-0"

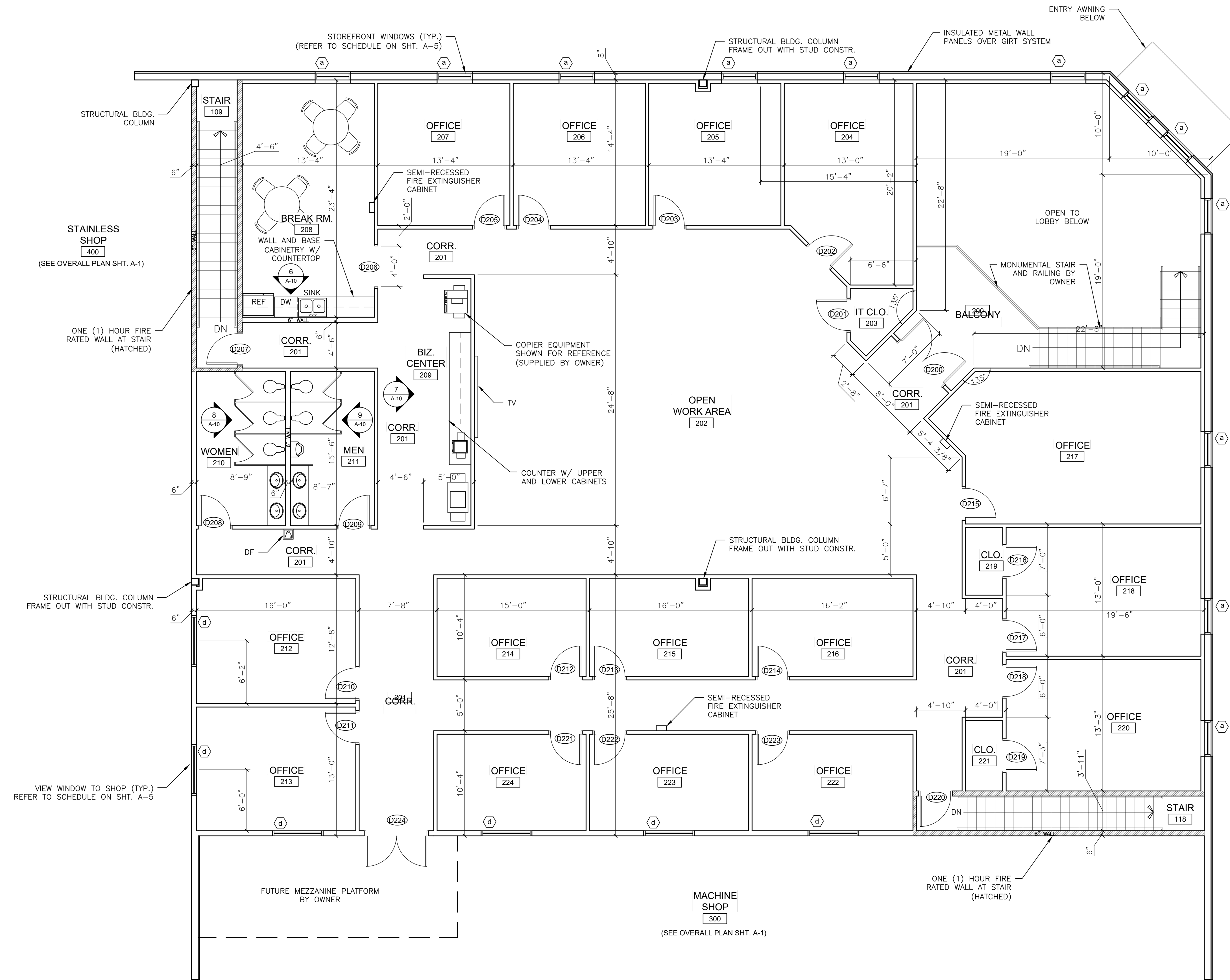
NOTES:
1) DIMENSIONS SHOWN ARE TO FACE OF STUD OR CENTERLINE OF OBJECT. (UNLESS NOTED OTHERWISE)
2) DOORS NOT DIMENSIONED ARE LOCATED AT CORNER OR CENTERED ON WALL/SPACE.
3) REFER TO SHT. A-5 FOR DOOR, WINDOW AND ROOM FINISH SCHEDULES.
4) NOTE 6" PLUMBING WALL LOCATIONS AS WELL AS 6" WALLS AT OUTSIDE OF STAIRWELLS.

WALL LEGEND:

[Symbol]	STUD WITH 1/2" WALLBOARD BOTH SIDES (4" THICK U.N.O.) FILL CAVITY WITH R-11 MIN.
[Symbol]	PARTITION
[Symbol]	1 HR RATED WALL

ADA RESTROOM FIXTURE GUIDELINES





1
A-4
ENLARGED OFFICE SECOND FLOOR PLAN
SCALE: 3/16" = 1'-0"

- NOTES:**
- 1) DIMENSIONS SHOWN ARE TO FACE OF STUD OR CENTERLINE OF OBJECT. (UNLESS NOTED OTHERWISE)
 - 2) DOORS NOT DIMENSIONED ARE LOCATED AT CORNER OR CENTERED ON WALL/SPACE.
 - 3) REFER TO SHT. A-5 FOR DOOR, WINDOW AND ROOM FINISH SCHEDULES.
 - 4) NOTE 6" PLUMBING WALL LOCATIONS AS WELL AS 6" WALLS AT OUTSIDE OF STAIRWELLS.

WALL LEGEND:

	- STUD WITH 1/2" WALLBOARD BOTH SIDES (4" THICK U.N.O.) FILL CAVITY WITH R-11 MIN.
	- PARTITION
	- 1 HR RATED WALL

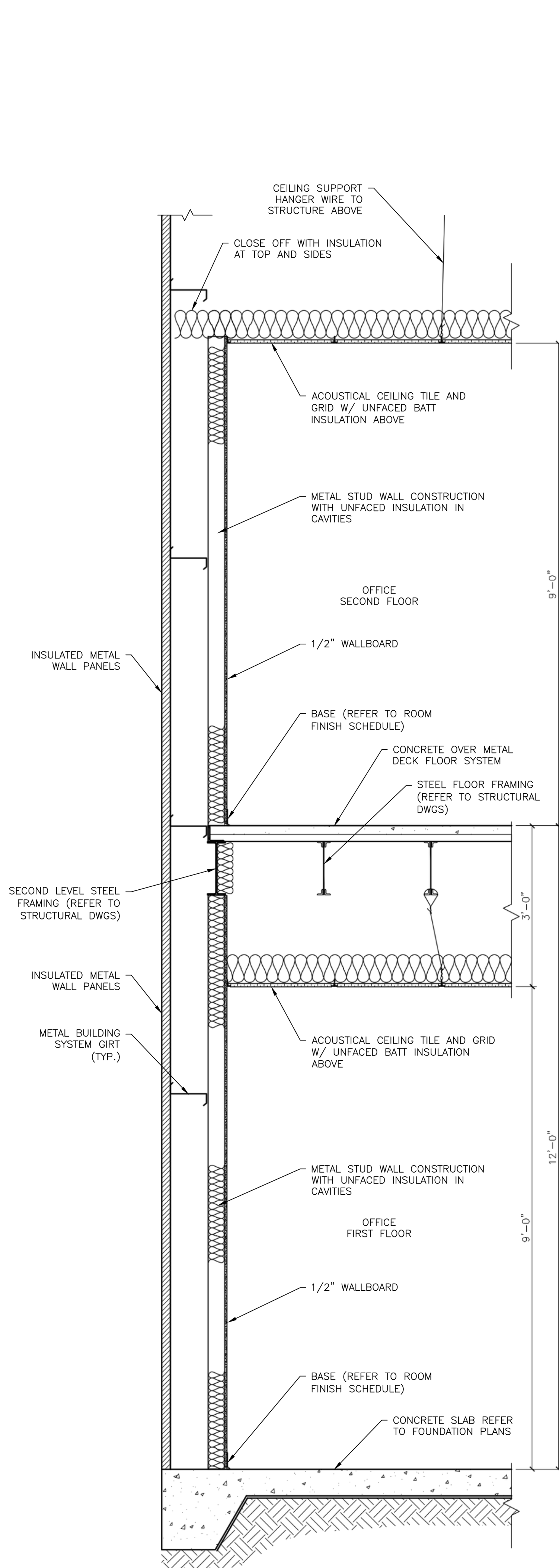
ROOM FINISH SCHEDULE

NO.	NAME	FLOOR		WALL		HEIGHT	CEILING		REMARKS
		FINISH	BASE	MAT'L.	FINISH		MAT'L.	FINISH	
100	LOBBY	POLISHED CONC.	4" RUBBER COVE	DRYWALL	PAINT	23'-6" A.F.F.	2'x2' ACT/WALLBD.	CORTEGA FLAT	PERIMETER WALLBOARD DETAIL. REFER TO SECTIONS
101	RECEPTION	POLISHED CONC.	4" RUBBER COVE	DRYWALL	PAINT	23'-6" A.F.F.	2'x2' ACT/WALLBD.	CORTEGA FLAT	PERIMETER WALLBOARD DETAIL. REFER TO SECTIONS
102	CORRIDOR	POLISHED CONC.	4" RUBBER COVE	DRYWALL	PAINT	9'-0" A.F.F.	2'x2' ACT	CORTEGA FLAT	
103	IT CLOSET	POLISHED CONC.	4" RUBBER COVE	DRYWALL	PAINT	9'-0" A.F.F.	2'x2' ACT	CORTEGA FLAT	
104	OFFICE	POLISHED CONC.	4" RUBBER COVE	DRYWALL	PAINT	9'-0" A.F.F.	2'x2' ACT	CORTEGA FLAT	
105	OFFICE	POLISHED CONC.	4" RUBBER COVE	DRYWALL	PAINT	9'-0" A.F.F.	2'x2' ACT	CORTEGA FLAT	
106	OFFICE	POLISHED CONC.	4" RUBBER COVE	DRYWALL	PAINT	9'-0" A.F.F.	2'x2' ACT	CORTEGA FLAT	
107	OFFICE	POLISHED CONC.	4" RUBBER COVE	DRYWALL	PAINT	9'-0" A.F.F.	2'x2' ACT	CORTEGA FLAT	
108	BREAK ROOM	POLISHED CONC.	4" RUBBER COVE	DRYWALL	PAINT	9'-0" A.F.F.	2'x2' ACT	CORTEGA FLAT	
109	STAIR	CONC.	4" RUBBER COVE	DRYWALL	PAINT	21'-0" A.F.F.	2'x2' ACT	CORTEGA FLAT	STAIR WALLS ARE ONE HOUR FIRE RATED
110	WOMEN	CERAMIC TILE	4" TILE COVE	DRYWALL/48" TILE	PAINT/TILE	9'-0" A.F.F.	2'x2' ACT	CORTEGA FLAT	48" HIGH TILE WAINESCOT
111	MEN	CERAMIC TILE	4" TILE COVE	DRYWALL/48" TILE	PAINT/TILE	9'-0" A.F.F.	2'x2' ACT	CORTEGA FLAT	48" HIGH TILE WAINESCOT
112	BIZ CENTER	POLISHED CONC.	4" RUBBER COVE	DRYWALL	PAINT	9'-0" A.F.F.	2'x2' ACT	CORTEGA FLAT	
113	CLOSET	POLISHED CONC.	4" RUBBER COVE	DRYWALL	PAINT	9'-0" A.F.F.	2'x2' ACT	CORTEGA FLAT	
114	CONFERENCE ROOM	POLISHED CONC.	4" RUBBER COVE	DRYWALL	PAINT	9'-0" A.F.F.	2'x2' ACT	CORTEGA FLAT	
115	RESTROOM	CERAMIC TILE	4" TILE COVE	DRYWALL/48" TILE	PAINT/TILE	9'-0" A.F.F.	2'x2' ACT	CORTEGA FLAT	48" HIGH TILE WAINESCOT
116	OFFICE	POLISHED CONC.	4" RUBBER COVE	DRYWALL	PAINT	9'-0" A.F.F.	2'x2' ACT	CORTEGA FLAT	
117	OWNERS OFFICE	POLISHED CONC.	4" RUBBER COVE	DRYWALL	PAINT	9'-0" A.F.F.	2'x2' ACT	CORTEGA FLAT	
118	STAIR	CONC.	4" RUBBER COVE	DRYWALL	PAINT	9'-0" A.F.F.	2'x2' ACT	CORTEGA FLAT	STAIR WALLS ARE ONE HOUR FIRE RATED
119	OWNERS RESTROOM	CERAMIC TILE	4" TILE COVE	DRYWALL/48" TILE	PAINT/TILE	9'-0" A.F.F.	2'x2' ACT	CORTEGA FLAT	48" HIGH TILE WAINESCOT
120	LINEN CLOSET	POLISHED CONC.	4" RUBBER COVE	DRYWALL	PAINT	9'-0" A.F.F.	2'x2' ACT	CORTEGA FLAT	
121	CLOSET	POLISHED CONC.	4" RUBBER COVE	DRYWALL	PAINT	9'-0" A.F.F.	2'x2' ACT	CORTEGA FLAT	
122	CLOSET	POLISHED CONC.	4" RUBBER COVE	DRYWALL	PAINT	9'-0" A.F.F.	2'x2' ACT	CORTEGA FLAT	
123	OFFICE	POLISHED CONC.	4" RUBBER COVE	DRYWALL	PAINT	9'-0" A.F.F.	2'x2' ACT	CORTEGA FLAT	
124	OFFICE	POLISHED CONC.	4" RUBBER COVE	DRYWALL	PAINT	9'-0" A.F.F.	2'x2' ACT	CORTEGA FLAT	
125	OFFICE	POLISHED CONC.	4" RUBBER COVE	DRYWALL	PAINT	9'-0" A.F.F.	2'x2' ACT	CORTEGA FLAT	
126	SHOP OFFICE	POLISHED CONC.	4" RUBBER COVE	DRYWALL	PAINT	9'-0" A.F.F.	2'x2' ACT	CORTEGA FLAT	
127	SHOP OFFICE	POLISHED CONC.	4" RUBBER COVE	DRYWALL	PAINT	9'-0" A.F.F.	2'x2' ACT	CORTEGA FLAT	
128	OFFICE	POLISHED CONC.	4" RUBBER COVE	DRYWALL	PAINT	9'-0" A.F.F.	2'x2' ACT	CORTEGA FLAT	
129	OFFICE	POLISHED CONC.	4" RUBBER COVE	DRYWALL	PAINT	9'-0" A.F.F.	2'x2' ACT	CORTEGA FLAT	
130	OFFICE	POLISHED CONC.	4" RUBBER COVE	DRYWALL	PAINT	9'-0" A.F.F.	2'x2' ACT	CORTEGA FLAT	
200	BALCONY	POLISHED CONC.	4" RUBBER COVE	DRYWALL	PAINT	11'-6" A.F.F.	2'x2' ACT/WALLBD.	CORTEGA FLAT	PERIMETER WALLBOARD DETAIL. REFER TO SECTIONS
201	CORRIDOR	POLISHED CONC.	4" RUBBER COVE	DRYWALL	PAINT	9'-0" A.F.F.	2'x2' ACT	CORTEGA FLAT	
202	OPEN WORK AREA	POLISHED CONC.	4" RUBBER COVE	DRYWALL	PAINT	9'-0" A.F.F.	2'x2' ACT	CORTEGA FLAT	
203	IT CLOSET	POLISHED CONC.	4" RUBBER COVE	DRYWALL	PAINT	9'-0" A.F.F.	2'x2' ACT	CORTEGA FLAT	
204	OFFICE	POLISHED CONC.	4" RUBBER COVE	DRYWALL	PAINT	9'-0" A.F.F.	2'x2' ACT	CORTEGA FLAT	
205	OFFICE	POLISHED CONC.	4" RUBBER COVE	DRYWALL	PAINT	9'-0" A.F.F.	2'x2' ACT	CORTEGA FLAT	
206	OFFICE	POLISHED CONC.	4" RUBBER COVE	DRYWALL	PAINT	9'-0" A.F.F.	2'x2' ACT	CORTEGA FLAT	
207	OFFICE	POLISHED CONC.	4" RUBBER COVE	DRYWALL	PAINT	9'-0" A.F.F.	2'x2' ACT	CORTEGA FLAT	
208	BREAK ROOM	POLISHED CONC.	4" RUBBER COVE	DRYWALL	PAINT	9'-0" A.F.F.	2'x2' ACT	CORTEGA FLAT	
209	BIZ CENTER	POLISHED CONC.	4" RUBBER COVE	DRYWALL	PAINT	9'-0" A.F.F.	2'x2' ACT	CORTEGA FLAT	
210	WOMEN	CERAMIC TILE	4" TILE COVE	DRYWALL/48" TILE	PAINT/TILE	9'-0" A.F.F.	2'x2' ACT	CORTEGA FLAT	48" HIGH TILE WAINESCOT
211	MEN	CERAMIC TILE	4" TILE COVE	DRYWALL/48" TILE	PAINT/TILE	9'-0" A.F.F.	2'x2' ACT	CORTEGA FLAT	48" HIGH TILE WAINESCOT
212	OFFICE	POLISHED CONC.	4" RUBBER COVE	DRYWALL	PAINT	9'-0" A.F.F.	2'x2' ACT	CORTEGA FLAT	
213	OFFICE	POLISHED CONC.	4" RUBBER COVE	DRYWALL	PAINT	9'-0" A.F.F.	2'x2' ACT	CORTEGA FLAT	
214	OFFICE	POLISHED CONC.	4" RUBBER COVE	DRYWALL	PAINT	9'-0" A.F.F.	2'x2' ACT	CORTEGA FLAT	
215	OFFICE	POLISHED CONC.	4" RUBBER COVE	DRYWALL	PAINT	9'-0" A.F.F.	2'x2' ACT	CORTEGA FLAT	
216	OFFICE	POLISHED CONC.	4" RUBBER COVE	DRYWALL	PAINT	9'-0" A.F.F.	2'x2' ACT	CORTEGA FLAT	
217	OFFICE	POLISHED CONC.	4" RUBBER COVE	DRYWALL	PAINT	9'-0" A.F.F.	2'x2' ACT	CORTEGA FLAT	
218	OFFICE	POLISHED CONC.	4" RUBBER COVE	DRYWALL	PAINT	9'-0" A.F.F.	2'x2' ACT	CORTEGA FLAT	
219	CLOSET	POLISHED CONC.	4" RUBBER COVE	DRYWALL	PAINT	9'-0" A.F.F.	2'x2' ACT	CORTEGA FLAT	
220	OFFICE	POLISHED CONC.	4" RUBBER COVE	DRYWALL	PAINT	9'-0" A.F.F.	2'x2' ACT	CORTEGA FLAT	
221	CLOSET	POLISHED CONC.	4" RUBBER COVE	DRYWALL	PAINT	9'-0" A.F.F.	2'x2' ACT	CORTEGA FLAT	
222	OFFICE	POLISHED CONC.	4" RUBBER COVE	DRYWALL	PAINT	9'-0" A.F.F.	2'x2' ACT	CORTEGA FLAT	
223	OFFICE	POLISHED CONC.	4" RUBBER COVE	DRYWALL	PAINT	9'-0" A.F.F.	2'x2' ACT	CORTEGA FLAT	
224	OFFICE	POLISHED CONC.	4" RUBBER COVE	DRYWALL	PAINT	9'-0" A.F.F.	2'x2' ACT	CORTEGA FLAT	
300	MACHINE SHOP	CONC.	N/A	N/A	N/A	OPEN TO DECK	N/A	N/A	OFFICE WALL TO RECEIVE WALLBD./PAINT & RUBBER BASE
301	SHOP RESTROOM	CONC.	4" RUBBER COVE	DRYWALL	PAINT	9'-0" A.F.F.	CEILING BD.	PAINT	
400	STAINLESS SHOP	CONC.	N/A	N/A	N/A	OPEN TO DECK	N/A	N/A	OFFICE WALL TO RECEIVE WALLBD./PAINT & RUBBER BASE
401	TOOL ROOM	CONC.	N/A	N/A	N/A	OPEN TO DECK	N/A	N/A	
402	OFFICE	CONC.	4" RUBBER COVE	DRYWALL	PAINT	9'-0" A.F.F.	2'x2' ACT	CORTEGA FLAT	
403	OFFICE	CONC.	4" RUBBER COVE	DRYWALL	PAINT	9'-0" A.F.F.	2'x2' ACT	CORTEGA FLAT	
404	OFFICE	CONC.	4" RUBBER COVE	DRYWALL	PAINT	9'-0" A.F.F.	2'x2' ACT	CORTEGA FLAT	
405	RESTROOM	CONC.	4" RUBBER COVE	DRYWALL	PAINT	9'-0" A.F.F.	2'x2' ACT	CORTEGA FLAT	
500	CARBON SHOP	CONC.	N/A	N/A	N/A	OPEN TO DECK	N/A	N/A	
501	OFFICE	CONC.	4" RUBBER COVE	DRYWALL	PAINT	9'-0" A.F.F.	2'x2' ACT	CORTEGA FLAT	
502	OFFICE	CONC.	4" RUBBER COVE	DRYWALL	PAINT	9'-0" A.F.F.	2'x2' ACT	CORTEGA FLAT	
503	RESTROOM	CONC.	4" RUBBER COVE	DRYWALL	PAINT	9'-0" A.F.F.	2'x2' ACT	CORTEGA FLAT	

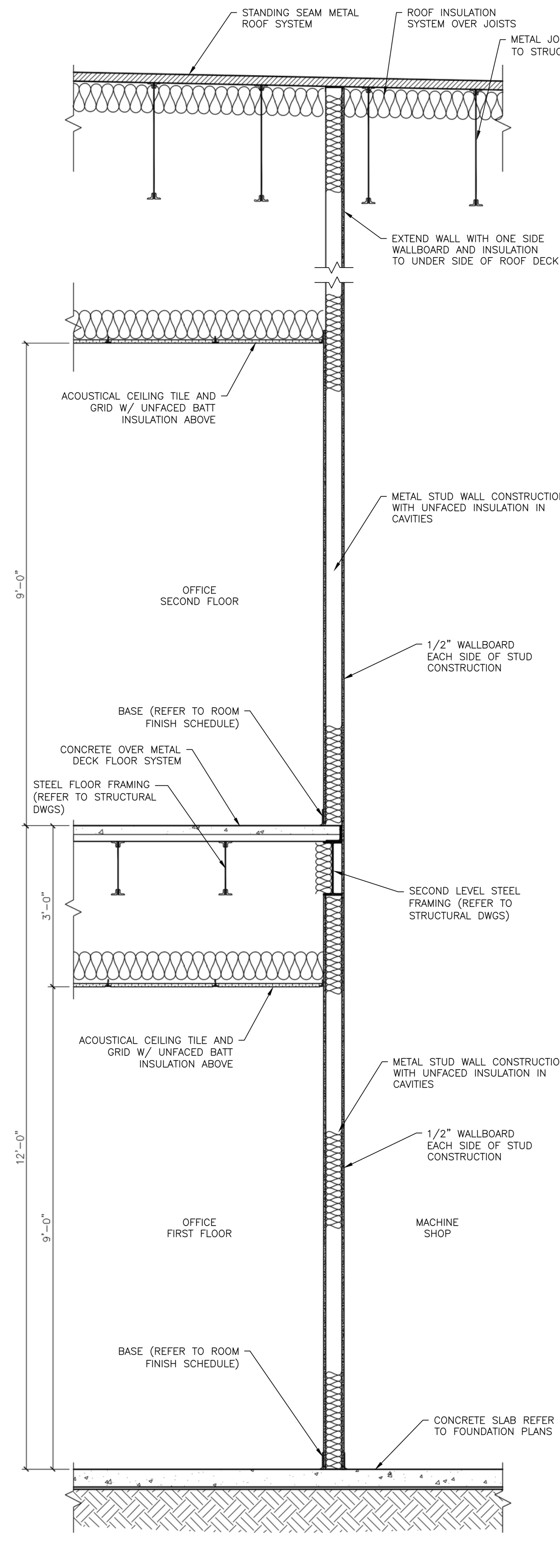
NOTE: A.F.F. - ABOVE FINISHED FLOOR
ACT - ACOUSTICAL CEILING TILE & GRID
LVT - LUXURY VINYL TILE

DOOR SCHEDULE

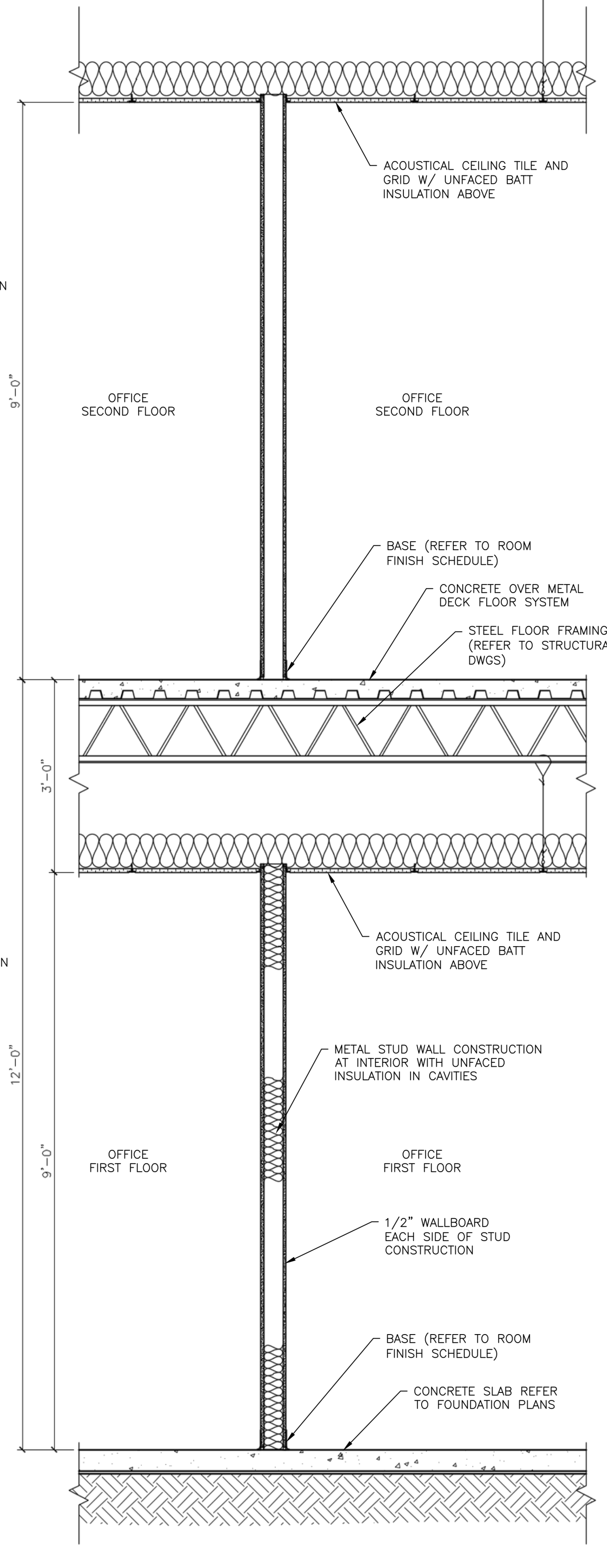
No.	MAT'L.	DOOR			TYPE	FRAME		REMARKS:
		WIDTH	HGT.	THK.		MAT'L.	FINISH	
D100	STOREFRONT	PR.3'-0"	7'-0"	-	C	STOREFRONT		PART OF STOREFRONT ENTRY (SEE GLASS TYPE C)
D101	S.C. WOOD	3'-0"	7'-0"	1 3/4"	A	METAL		
D102	S.C. WOOD	3'-0"	7'-0"	1 3/4"	B	METAL		DOOR WITH VIEW KIT
D103	S.C. WOOD	3'-0"	7'-0"	1 3/4"	B	METAL		DOOR WITH VIEW KIT
D104	S.C. WOOD	3'-0"	7'-0"	1 3/4"	B	METAL		DOOR WITH VIEW KIT
D105	S.C. WOOD	3'-0"	7'-0"	1 3/4"	B	METAL		DOOR WITH VIEW KIT
D106	N/A	4'-0"	7'-0"	-	-	N/A		CASED OPENING - WRAP JAMB & HEADER WITH WALLBOARD
D107	N/A	4'-0"	7'-0"	-	-	N/A		CASED OPENING - WRAP JAMB & HEADER WITH WALLBOARD
D108	METAL	3'-0"	7'-0"	1 3/4"	A	METAL		
D109								
D110	METAL	3'-0"	7'-0"	1 3/4"	B	METAL		DOOR WITH VIEW KIT
D111	S.C. WOOD	3'-0"	7'-0"	1 3/4"	A	METAL		
D112	S.C. WOOD	3'-0"	7'-0"	1 3/4"	A	METAL		
D113	N/A	4'-0"	7'-0"	-	-	N/A		CASED OPENING - WRAP JAMB & HEADER WITH WALLBOARD
D114	S.C. WOOD	3'-0"	7'-0"	1 3/4"	A	METAL		
D115	GLASS	PR.3'-0"	8'-0"	-	-	N/A		GLASS DOORS PART OF GLASS WALL SYSTEM
D116	S.C. WOOD	3'-0"	7'-0"	1 3/4"	A	METAL		
D117	S.C. WOOD	3'-0"	7'-0"	1 3/4"	B	METAL		DOOR WITH VIEW KIT
D118	S.C. WOOD	3'-0"	7'-0"	1 3/4"	B	METAL		DOOR WITH VIEW KIT
D119	STOREFRONT	3'-0"	7'-0"	-	C	STOREFRONT		
D120	METAL	3'-0"	7'-0"	1 3/4"	A	METAL		
D121	METAL	3'-0"	7'-0"	1 3/4"	A	METAL		20 MIN. RATED DOOR, FRAME & HDWR.
D122	S.C. WOOD	3'-0"	7'-0"	1 3/4"	A	METAL		
D123	S.C. WOOD	1'-8"	7'-0"	1 3/4"	A	METAL		
D124	S.C. WOOD	3'-0"	7'-0"	1 3/4"	A	METAL		
D125	S.C. WOOD	3'-0"	7'-0"	1 3/4"	A	METAL		
D126	METAL	3'-0"	7'-0"	1 3/4"	B	METAL		DOOR WITH VIEW KIT
D127	S.C. WOOD	3'-0"	7'-0"	1 3/4"	B	METAL		DOOR WITH VIEW KIT
D128	S.C. WOOD	3'-0"	7'-0"	1 3/4"	B	METAL		DOOR WITH VIEW KIT
D129	S.C. WOOD	3'-0"	7'-0"	1 3/4"	B	METAL		DOOR WITH VIEW KIT
D130	S.C. WOOD	3'-0"	7'-0"	1 3/4"	B	METAL		DOOR WITH VIEW KIT
D131	S.C. WOOD	3'-0"	7'-0"	1 3/4"	B	METAL		DOOR WITH VIEW KIT
D132	S.C. WOOD	3'-0"	7'-0"	1 3/4"	B	METAL		DOOR WITH VIEW KIT
D133	METAL	3'-0"	7'-0"	1 3/4"	B	METAL		DOOR WITH VIEW KIT
D134	METAL	3'-0"	7'-0"	1 3/4"	A	METAL		
D135	METAL	3'-0"	7'-0"	1 3/4"	A	METAL		
D136	S.C. WOOD	3'-0"	7'-0"	1 3/4"	B	METAL		DOOR WITH VIEW KIT
D137	S.C. WOOD	3'-0"	7'-0"	1 3/4"	B	METAL		DOOR WITH VIEW KIT
D138	S.C. WOOD	3'-0"	7'-0"	1 3/4"	B	METAL		DOOR WITH VIEW KIT
D200	WOOD/GLASS	PR.3'-0"	7'-0"	1 3/4"	D	METAL		FULL GLASS DOOR
D201	S.C. WOOD	3'-0"	7'-0"	1 3/4"	A	METAL		
D202	S.C. WOOD	3'-0"	7'-0"	1 3/4"	B	METAL		DOOR WITH VIEW KIT
D203	S.C. WOOD	3'-0"	7'-0"	1 3/4"	B	METAL		DOOR WITH VIEW KIT
D204	S.C. WOOD	3'-0"	7'-0"	1 3/4"	B	METAL		DOOR WITH VIEW KIT
D205	S.C. WOOD	3'-0"	7'-0"	1 3/4"	B	METAL		DOOR WITH VIEW KIT
D206	N/A	4'-0"	7'-0"	-	-	N/A		CASED OPENING - WRAP JAMB & HEADER WITH WALLBOARD
D207	S.C. WOOD	3'-0"	7'-0"	1 3/4"	A	METAL		20 MIN. RATED DOOR, FRAME & HDWR.
D208	S.C. WOOD	3'-0"	7'-0"	1 3/4"	A	METAL		
D209	S.C. WOOD	3'-0"	7'-0"	1 3/4"	A	METAL		
D210	S.C. WOOD	3'-0"	7'-0"	1 3/4"	B	METAL		DOOR WITH VIEW KIT
D211	S.C. WOOD	3'-0"	7'-0"	1 3/4"	B	METAL		DOOR WITH VIEW KIT
D212	S.C. WOOD	3'-0"	7'-0"	1 3/4"	B	METAL		DOOR WITH VIEW KIT
D213	S.C. WOOD	3'-0"	7'-0"	1 3/4"	B	METAL		DOOR WITH VIEW KIT
D214	S.C. WOOD	3'-0"	7'-0"	1 3/4"	B	METAL		DOOR WITH VIEW KIT
D215	S.C. WOOD	3'-0"	7'-0"	1 3/4"	B	METAL		DOOR WITH VIEW KIT
D216	S.C. WOOD	3'-0"	7'-0"	1 3/4"	A	METAL		
D217	S.C. WOOD	3'-0"	7'-0"	1 3/4"	B	METAL		DOOR WITH VIEW KIT
D218	S.C. WOOD	3'-0"	7'-0"	1 3/4"	B	METAL		DOOR WITH



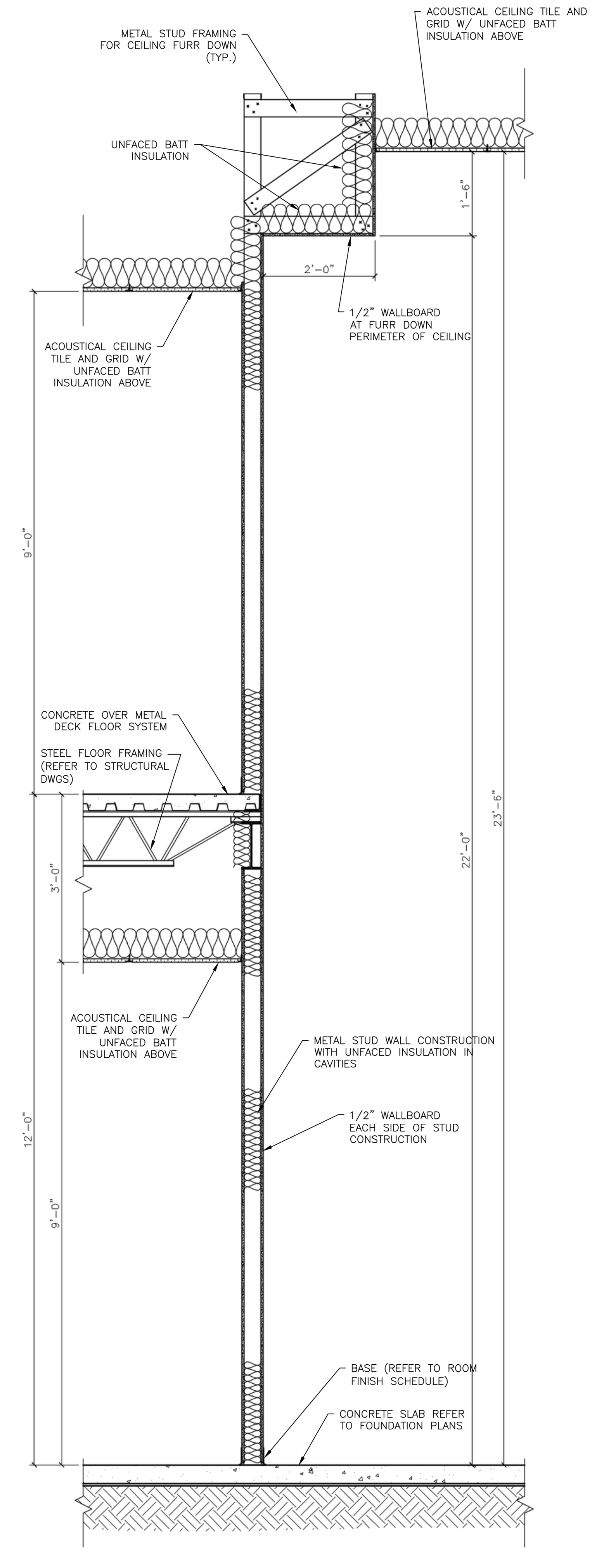
1 WALL SECTION
A-8 / SCALE: 3/4" = 1'-0"



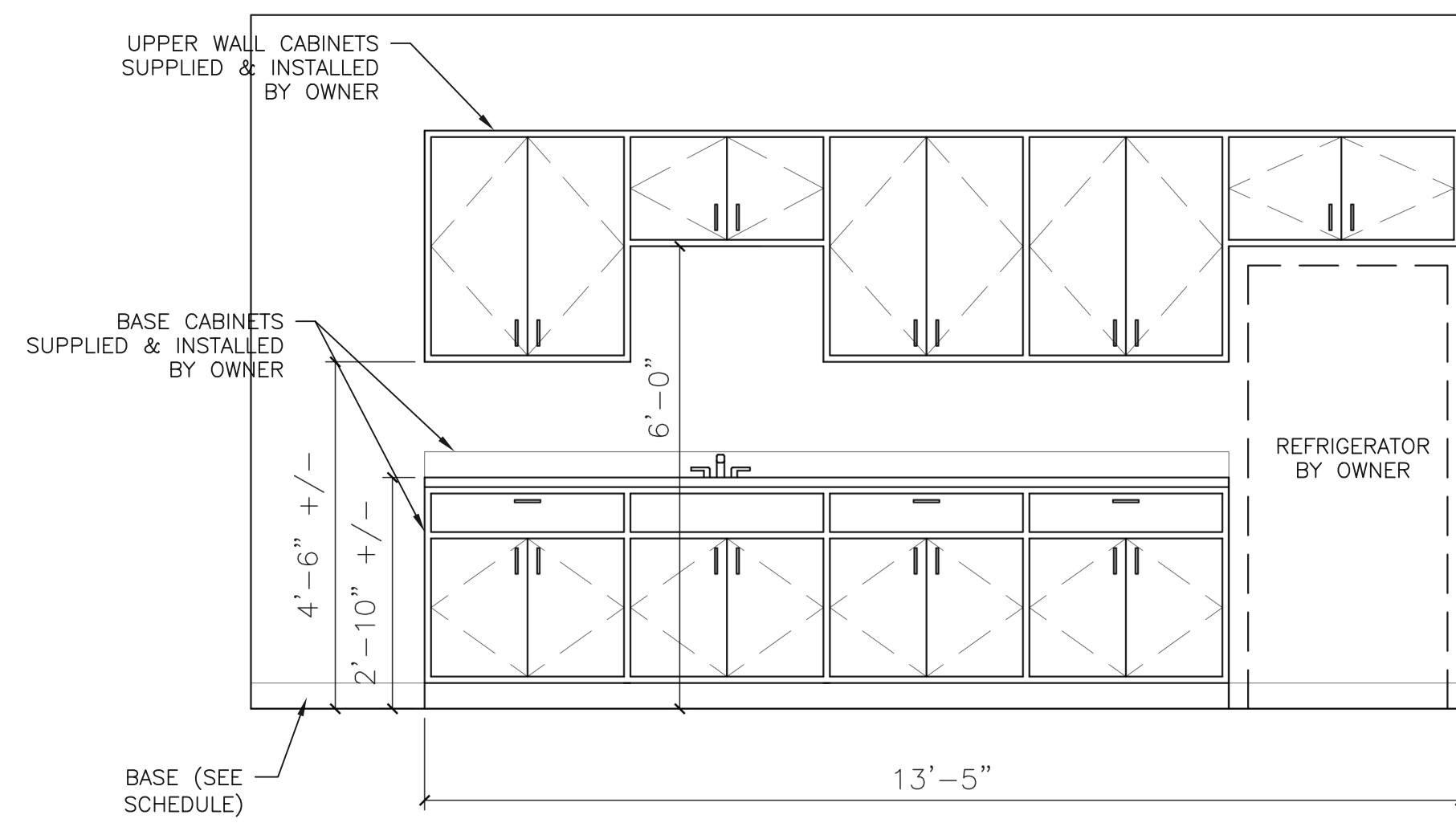
2 WALL SECTION
A-8 / SCALE: 3/4" = 1'-0"



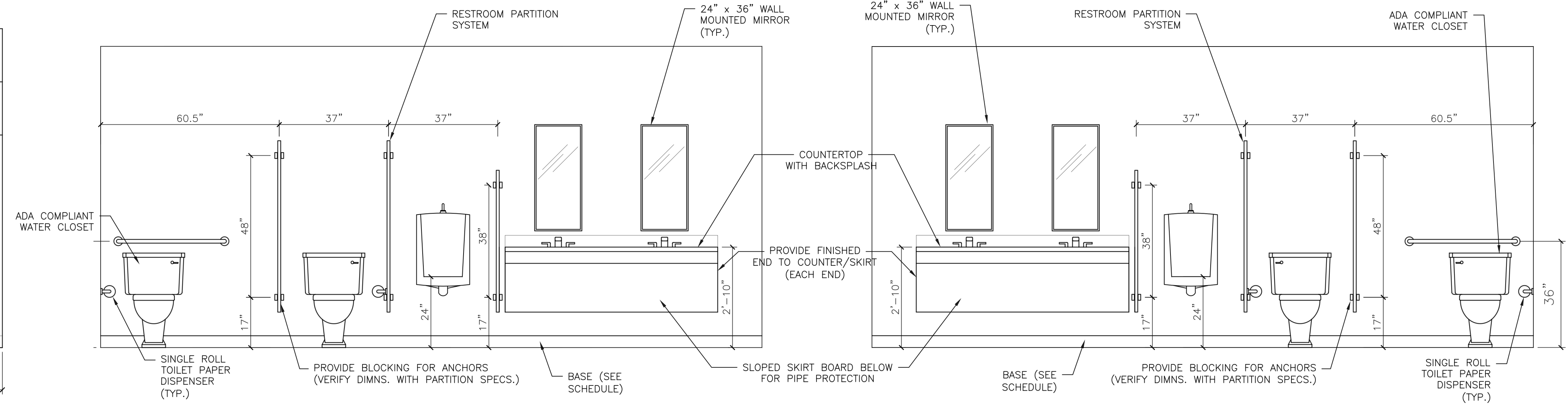
3 WALL SECTION
A-8 / SCALE: 3/4" = 1'-0"



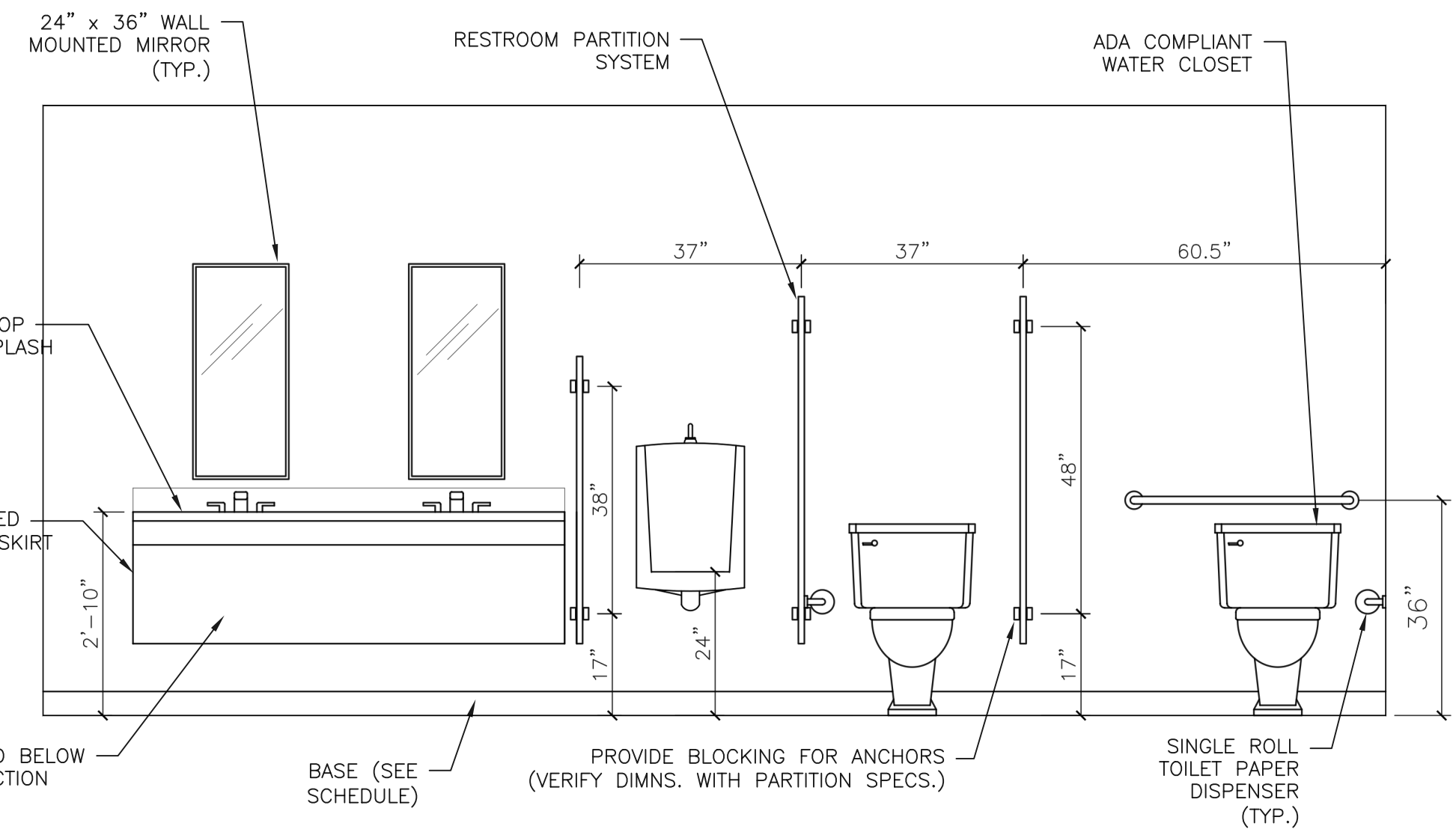
4 WALL SECTION
A-8 / SCALE: 3/4" = 1'-0"



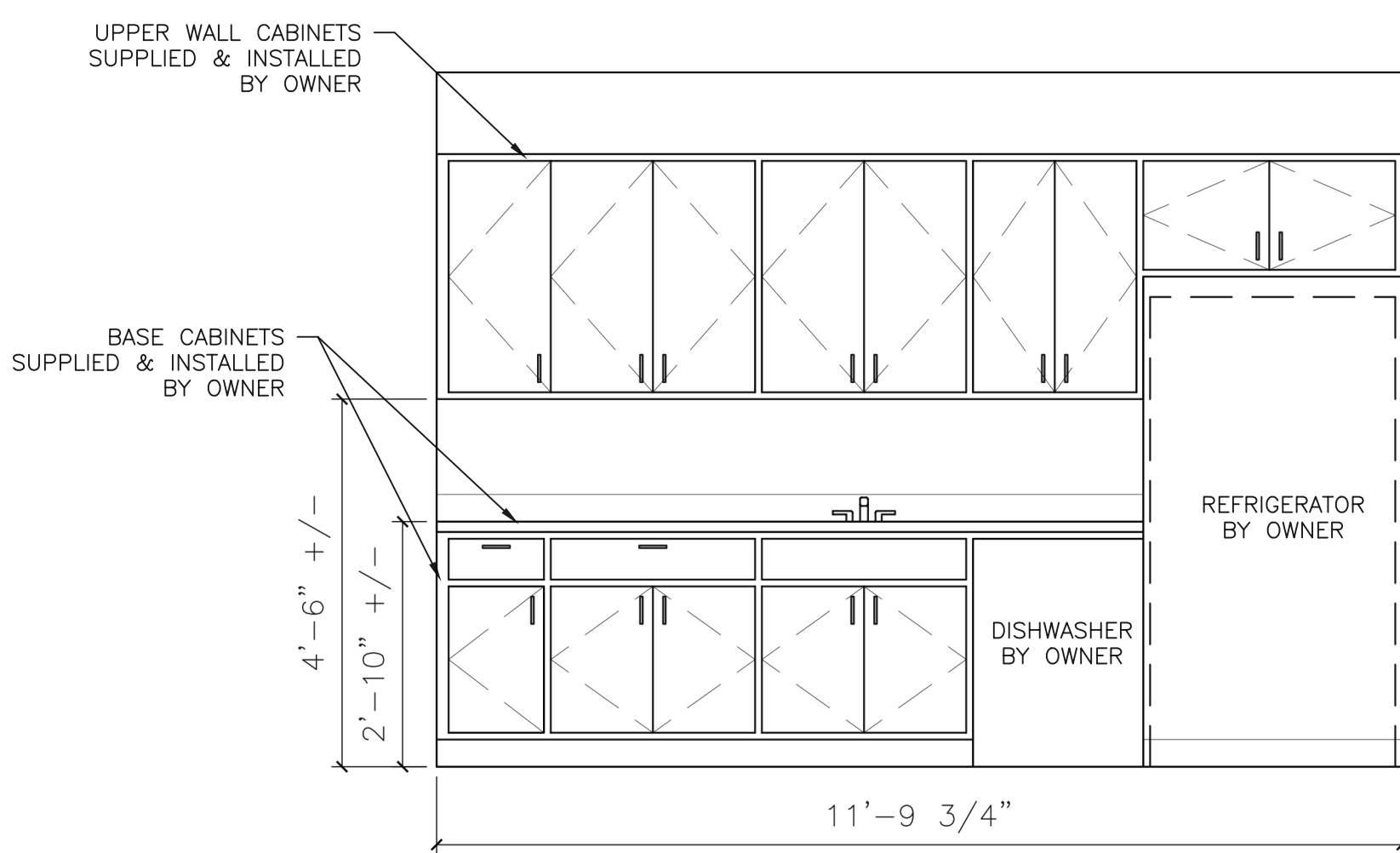
1 SHOP BREAK ROOM ELEVATION (502)
 SCALE: 1/2" = 1'-0"
 NOTE: COORDINATE CABINETRY WITH APPLIANCE SELECTIONS



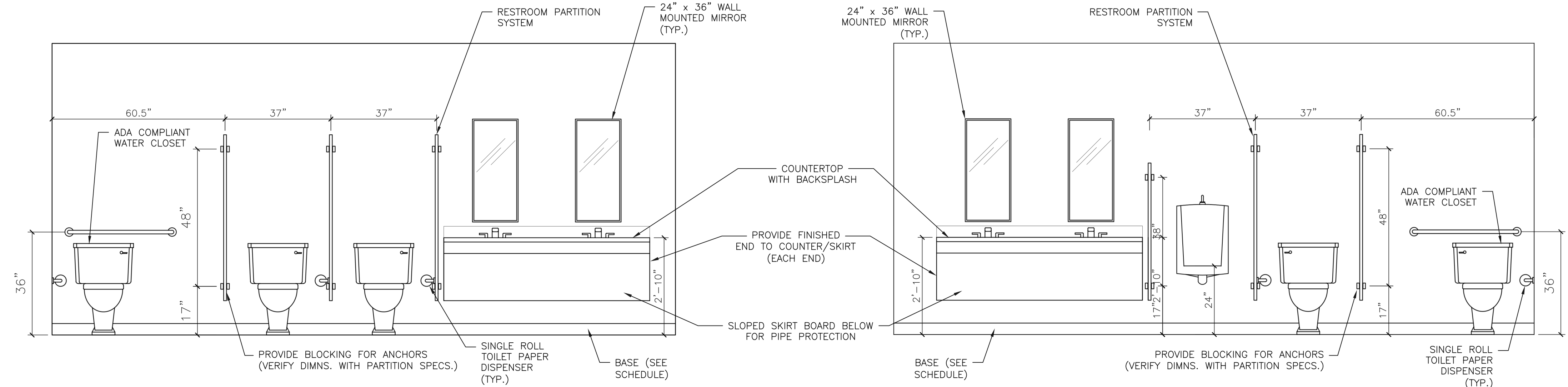
2 SHOP RESTROOM ELEVATION (503)
 SCALE: 1/2" = 1'-0"
 NOTE: PARTITION FRONT PANELS/DOORS NOT SHOWN FOR CLARITY.



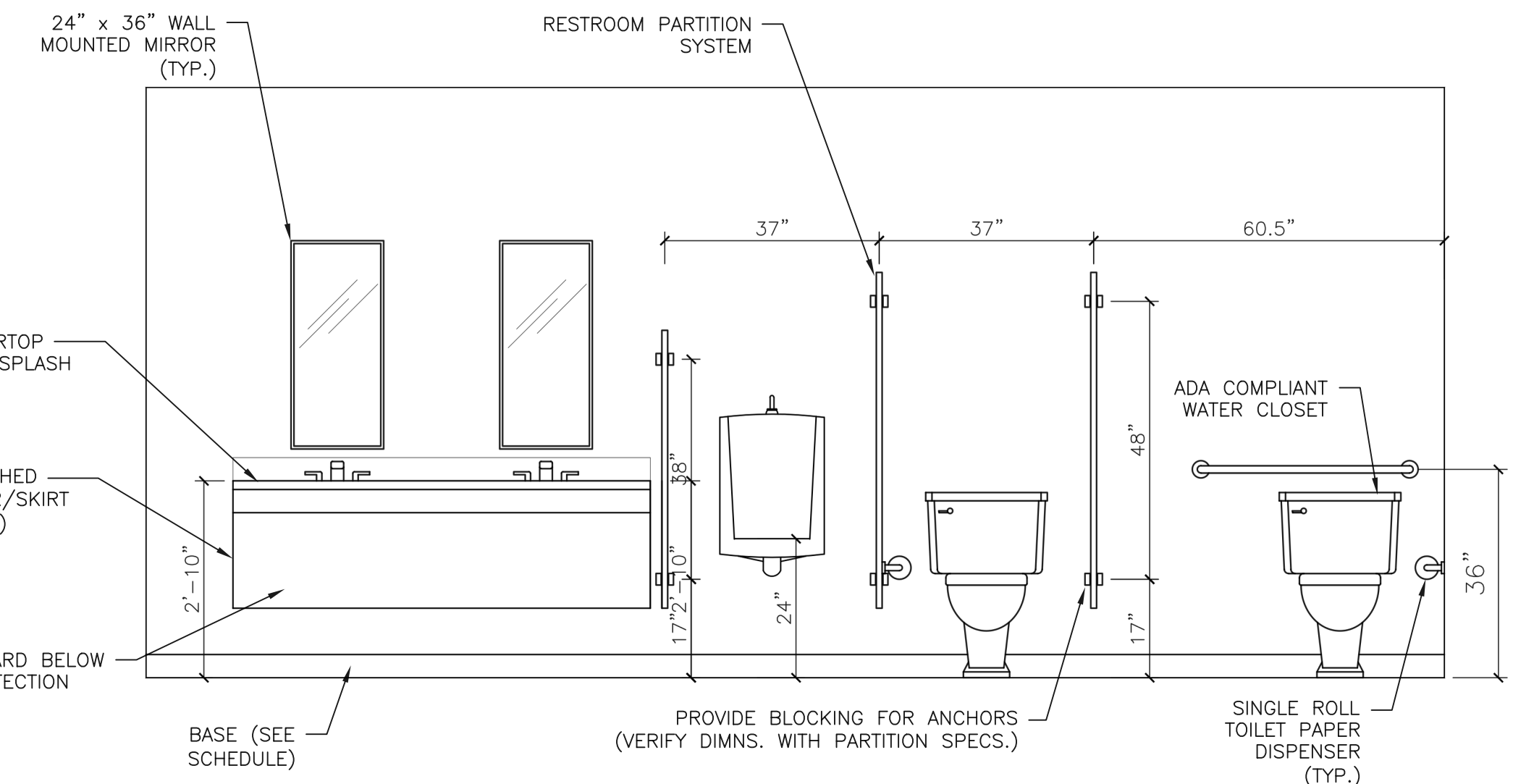
3 SHOP RESTROOM ELEVATION (405)
 SCALE: 1/2" = 1'-0"
 NOTE: PARTITION FRONT PANELS/DOORS NOT SHOWN FOR CLARITY.



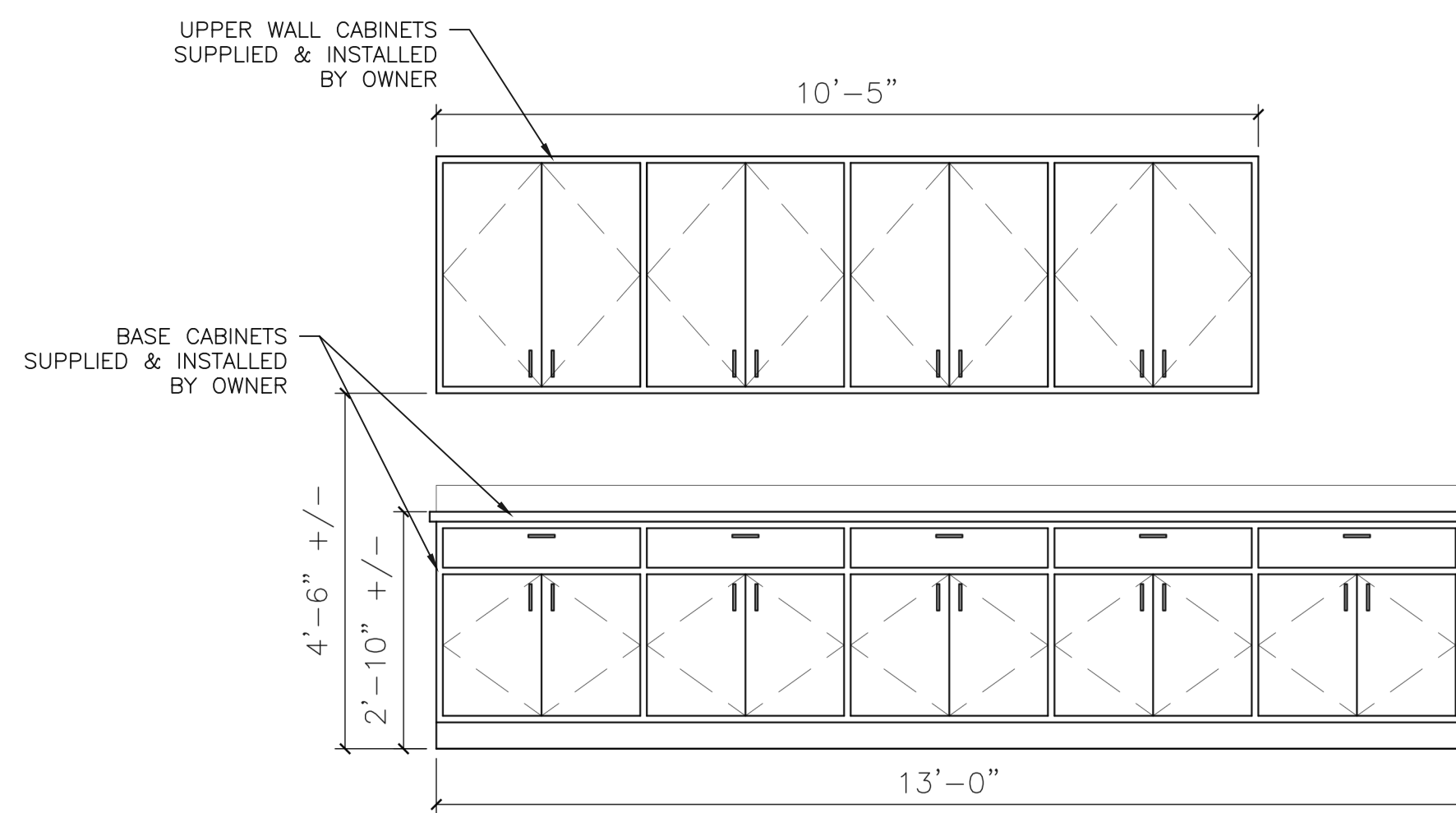
4 LEVEL ONE BREAK ROOM ELEVATION (108)
 SCALE: 1/2" = 1'-0"
 NOTE: COORDINATE CABINETRY WITH APPLIANCE SELECTIONS



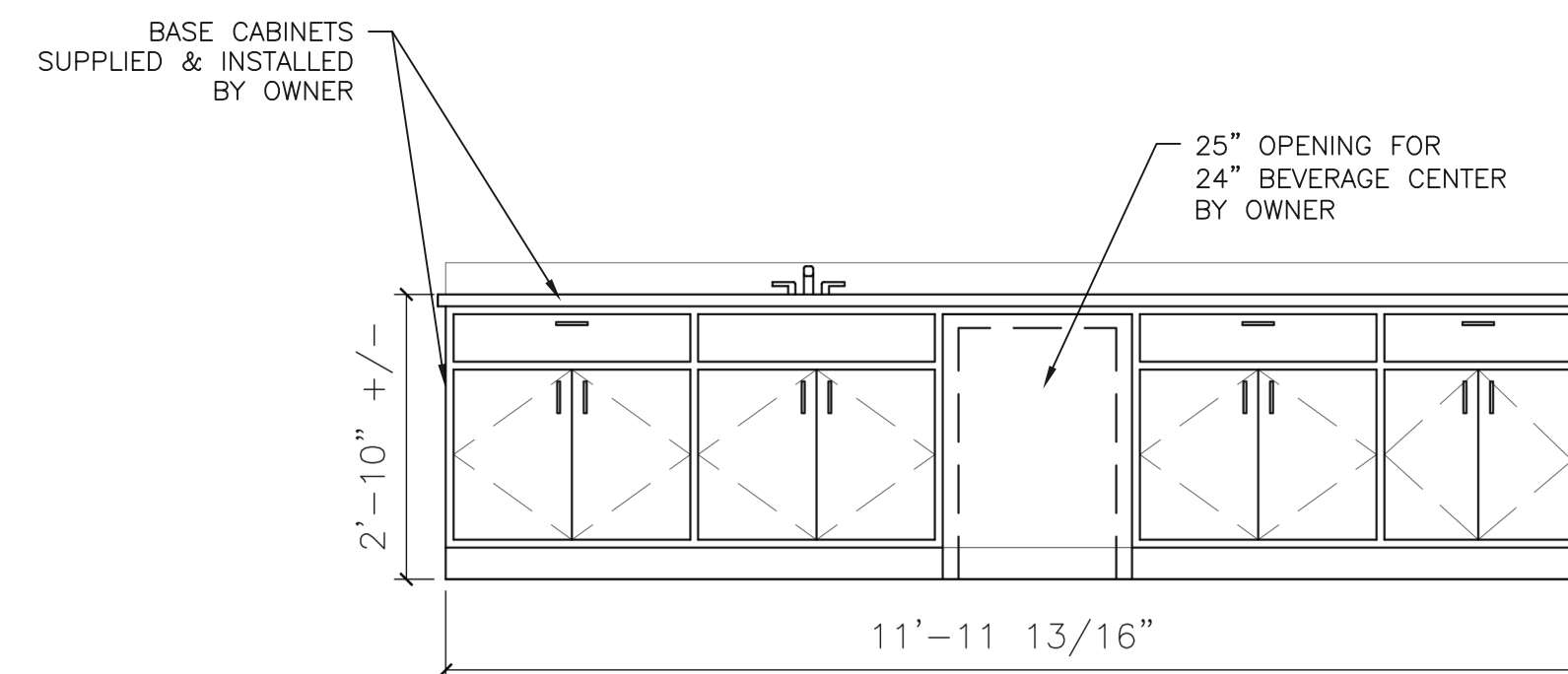
5 LEVEL ONE WOMEN'S R.R. ELEVATION (110)
 SCALE: 1/2" = 1'-0"
 NOTE: PARTITION FRONT PANELS/DOORS NOT SHOWN FOR CLARITY.



6 LEVEL ONE MEN'S R.R. ELEVATION (111)
 SCALE: 1/2" = 1'-0"
 NOTE: PARTITION FRONT PANELS/DOORS NOT SHOWN FOR CLARITY.



7 LEVEL ONE BUSINESS CENTER ELEVATION (112)
 SCALE: 1/2" = 1'-0"



8 LEVEL ONE CONFERENCE CABINETS ELEVATION (114)
 SCALE: 1/2" = 1'-0"

TOILET ACCESSORY SCHEDULE		
ABBREV.	ITEM DESCRIPTION	MODEL
36" GB	36" GRAB BAR - NON SLIP GRIPPING SURFACE, CONCEALED FATENERS.	BOBRICK 6806
42" GB	42" GRAB BAR - NON SLIP GRIPPING SURFACE, CONCEALED FATENERS.	BOBRICK B6806
MIR	STAINLESS STEEL FRAMED MIRROR - 1/4" TEMPERED GLASS - 18" X 30"	BOBRICK BL65
TTD	TOILET TISSUE DISPENSER - 1 ROLL, SURFACE MOUNT, CAM SPINDLE	BOBRICK B2730
MR	MOP RACK - 4 HOLDERS ON 3" STAINLESS STEEL TRACK	BRADLEY 995-4
CT	CHANGING TABLE - FOLDING POLYETHYLENE HORIZONTAL SHELL	BOBRICK KB200
PTD	PAPER TOWEL DISPENSER - STAINLESS STEEL C-FOLD, SURFACE MOUNT	BRADLEY 250-15
SD	SOAP DISPENSER - STAINLESS STEEL LIQUID SOAP, SURFACE MOUNT	BRADLEY 6542

NOTE: MODELS ARE THE BASIS OF DESIGN FOR QUALITY AND FUNCTION. FURNISH SPECIFIED MODEL OR EQUAL.

- NOTES:
- 1) DIMENSIONS SHOWN ARE TO FACE OF STUD/STEEL, FINISHED FLOOR OR CENTERLINE OF OBJECT. (UNLESS NOTED OTHERWISE)
 - 2) REFER TO SHT. A-3 AND A-4 FOR OVERALL FLOOR PLAN AND WALL DIMENSIONS.
 - 3) REFER TO SHT. A-5 FOR DOOR, WINDOW AND ROOM FINISH SCHEDULES.
 - 4) INSTALL WOOD BLOCKING FOR ALL GRAB BARS, TOILET ACCESSORIES, FIXTURES, PARTITIONS ETC.
 - 5) ALL CABINETRY SHALL BE FURNISHED AND INSTALLED BY OWNER.